

WAAS CH <b>40015</b> <b>W28A</b>	APP CRS <b>277°</b>	Rwy Idg <b>9351</b> TDZE <b>50</b> Apt Elev <b>50</b>
--	------------------------	---

RNAV (GPS) Z RWY 28  
SAVANNAH/HILTON HEAD INTL (SAV)

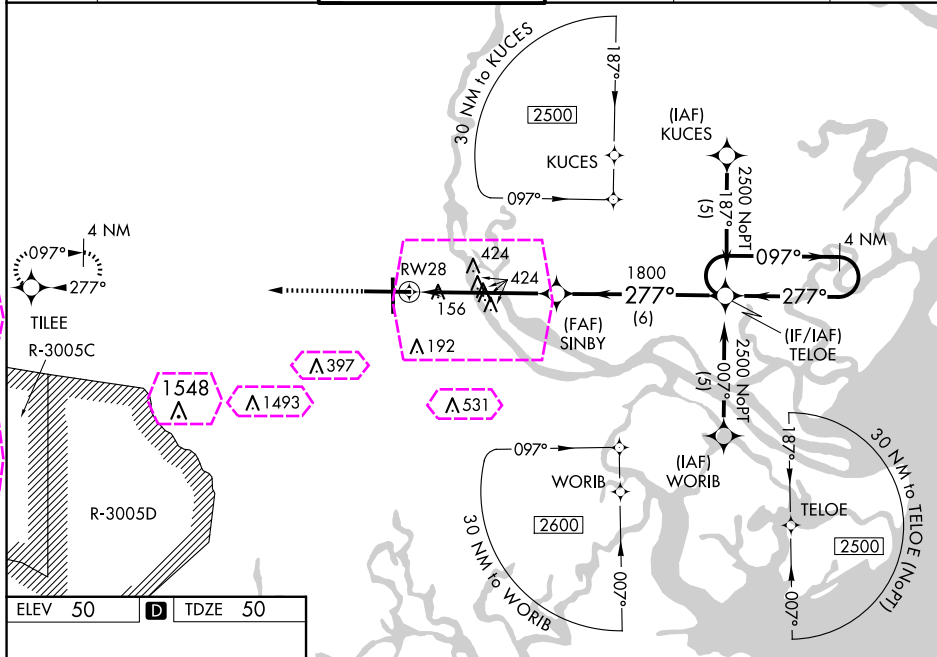
RNP APCH.



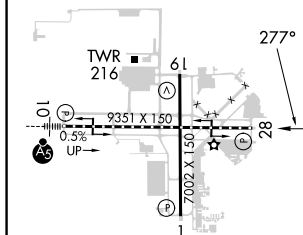
For uncompensated Baro-VNAV systems, LNAV/VNAV NA below -15°C (5°F) or above 49°C (120°F).

**MISSED APPROACH:** Climb to 2600 direct TLEE and hold.

ATIS 123.75	SAVANNAH APP CON★ 125.3 371.875	SAVANNAH TOWER★ 125.975 (CTAF) 0 257.8	GND CON 121.9 348.6	CLNC DEL 119.55 291.775	UNICOM 122.95
----------------	------------------------------------	---	------------------------	----------------------------	------------------



ELEV 50	<b>D</b>	TDZE 50
---------	----------	---------



TDZ/CL Rwy 10  
REIL Rwys 19 and 28 **L**  
HIRL Rwys 1-19 and 10-28 **L**

2600 TILEE

VGSI and RNAV glidepath not coincident (VGSI Angle 3.00/TCH 66).

\*LNAV only.

RW28

\*1.8 NM to RW28

SINBY 1800

TELOE

4 NM Holding Pattern

097° → 2500

← 277°

GP 3.00° TCH 52

1.8 NM 3.5 NM 6 NM

CATEGORY	A	B	C	D
LPV DA		307-1	257 (300-1)	
LNAV/VNAV DA		431-1¼	381 (400-1¼)	
LNAV MDA	680-1	630 (700-1)	680-1¾	630 (700-1¾)
<b>CIRCLING</b>	680-1	630 (700-1)	740-2 690 (700-2)	740-2¼ 690 (700-2¼)

SAVANNAH, GEORGIA

AL-380 (FAA)

25219

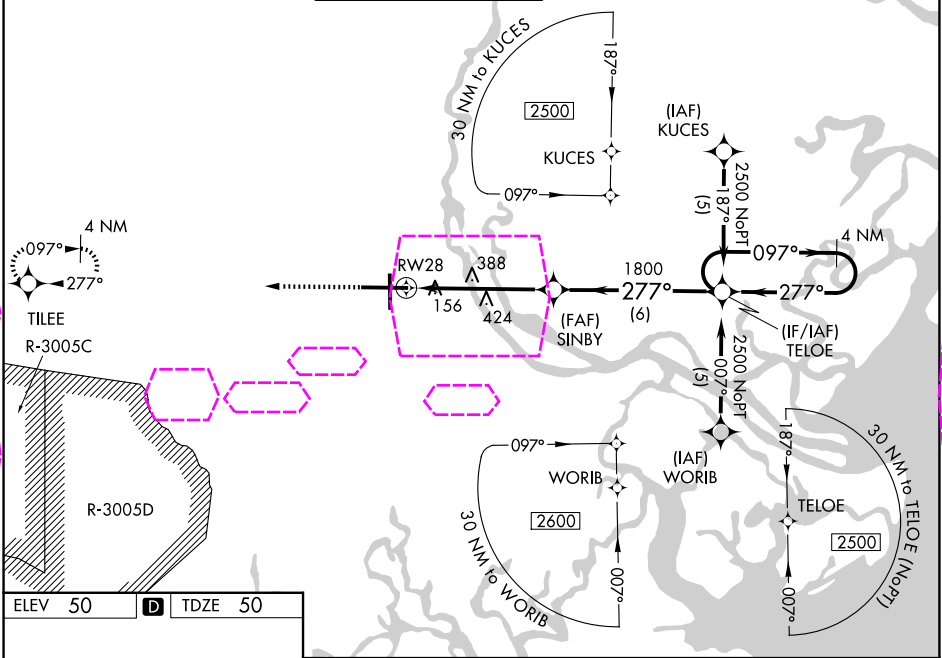
WAAS CH <b>40015</b> <b>W28A</b>	APP CRS <b>277°</b>	Rwy Ldg <b>9351</b> TDZE <b>50</b> Apt Elev <b>50</b>
--	------------------------	---

# RNAV (GPS) Z RWY 28

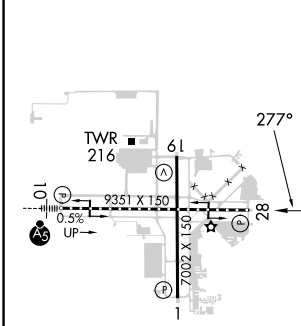
SAVANNAH/HILTON HEAD INTL (SAV)

RNP APCH.	MISSED APPROACH: Climb to 2600 direct TILEE and hold.
-----------	---

ATIS <b>123.75</b>	SAVANNAH APP CON* <b>125.3 371.875</b>	SAVANNAH TOWER* <b>125.975 (CTAF) 257.8</b>	GND CON <b>121.9 348.6</b>	CLNC DEL <b>119.55 291.775</b>	UNICOM <b>122.95</b>
-----------------------	---	--	-------------------------------	-----------------------------------	-------------------------



ELEV 50	<b>D</b>	TDZE 50
---------	----------	---------



TDZ/CL Rwy 10  
REIL Rwys 19 and 28  
HIRL Rwys 1-19 and 10-28

2600	TILEE	VGSI and RNAV glidepath not coincident (VGSI Angle 3.00/TCH 66).	TELOE	4 NM Holding Pattern
*LNAV only.	SINBY	1800	097°	2500
RW28	1.8 NM to RW28	1800	277°	GP 3.00° TCH 52
1.8 NM	3.5 NM	6 NM		
CATEGORY	A	B	C	D
LPV DA	307-1 257 (300-1)			
LNAV/VNAV DA	431-1¼ 381 (400-1¼)			
LNAV MDA	680-1	630 (700-1)	680-1¾	630 (700-1¾)
CIRCLING	680-1	630 (700-1)	740-2 690 (700-2)	740-2¼ 690 (700-2¼)

SAVANNAH, GEORGIA  
Amdt 2C 10SEP20

32°08'N-81°12'W

SAVANNAH/HILTON HEAD INTL (SAV)  
**RNAV (GPS) Z RWY 28**