

WAAS CH 45515 W01A	APP CRS 006°	Rwy Idg 7002 TDZE 39 Apt Elev 50
--	------------------------	---

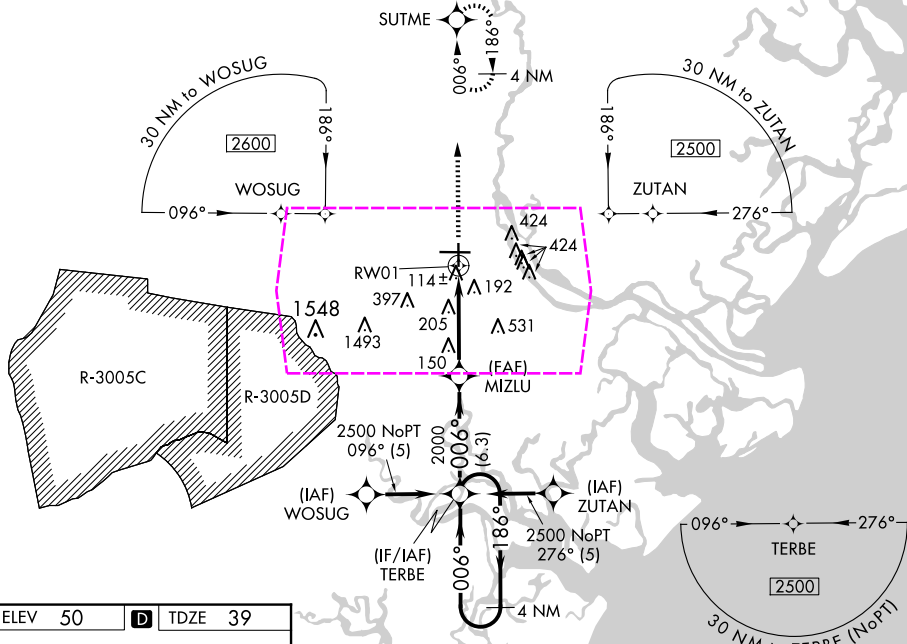
RNAV (GPS) RWY 1
SAVANNAH/HILTON HEAD INTL (SAV)

RNP APCH.

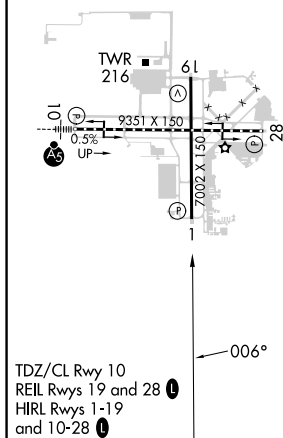
T For uncompensated Baro-VNAV systems, LNAV/VNAV NA below
A -15°C (5°F) or above 49°C (120°F).

MISSED APPROACH: Climb to 2500 direct SUTME and hold.

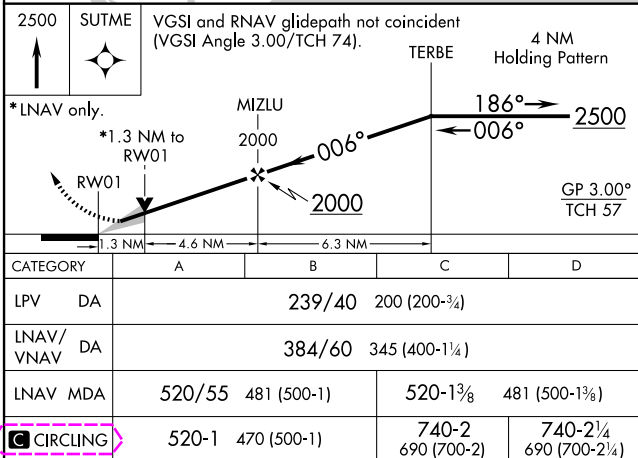
ATIS 123.75	SAVANNAH APP CON★ 120.4 353.775	SAVANNAH TOWER★ 125.975 (CTAF) 0 257.8	GND CON 121.9 348.6	CLNC DEL 119.55 291.775	UNICOM 122.95
----------------	------------------------------------	---	------------------------	----------------------------	------------------



ELEV 50	D	TDZE 39
---------	----------	---------



SAVANNAH, GEORGIA
Amdt 2B 10SEP20

SAVANNAH/HILTON HEAD INTL (SAV)
RNAV (GPS) RWY 1

32°08'N-81°12'W

SAVANNAH, GEORGIA

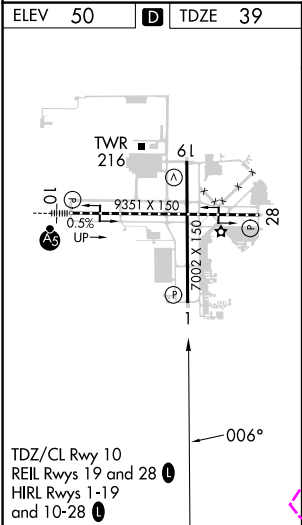
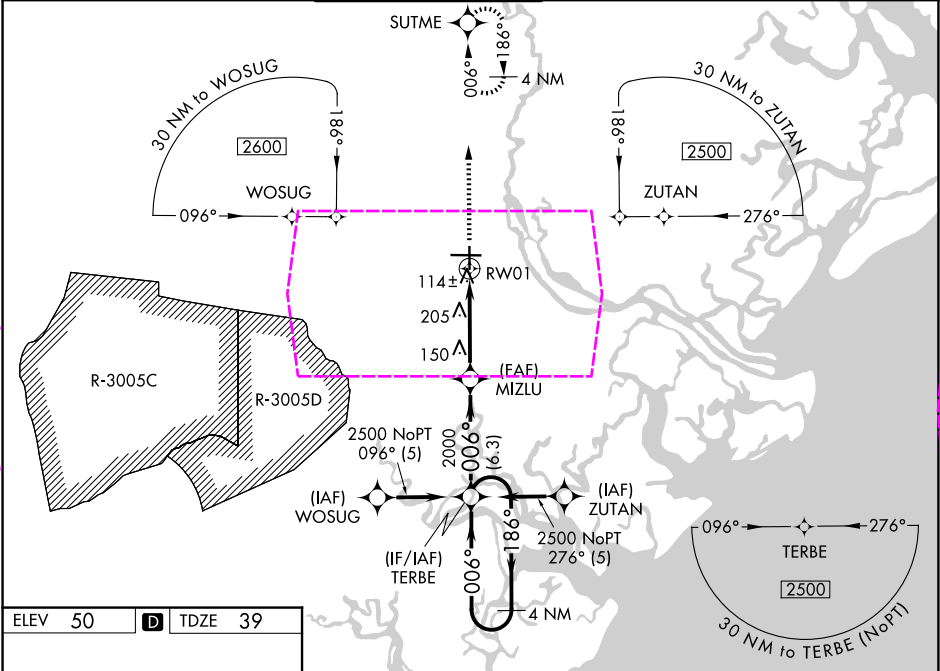
AL-380 (FAA)

25219

WAAS CH 45515 W01A	APP CRS 006°	Rwy Ldg 7002 TDZE 39 Apt Elev 50
--	------------------------	---

RNAV (GPS) RWY 1
SAVANNAH/HILTON HEAD INTL (SAV)

RNP APCH.		MISSED APPROACH: Climb to 2500 direct SUTME and hold.			
ATIS 123.75	SAVANNAH APP CON ★ 125.3 371.875	SAVANNAH TOWER ★ 125.975 (CTAF) 0 257.8	GND CON 121.9 348.6	CLNC DEL 119.55 291.775	UNICOM 122.95



2500 ↑		SUTME ✦		VGSI and RNAV glidepath not coincident (VGSI Angle 3.00/TCH 74).		
*LNNAV only.		MIZLU 2000		TERBE 4 NM Holding Pattern		
*1.3 NM to RW01		006°		186°→ ←006° 2500		
GP 3.00° TCH 57		2000				
1.3 NM		4.6 NM		6.3 NM		
CATEGORY	A		B		C	D
LPV DA	239/40 200 (200-¾)					
LNNAV/ VNAV DA	384/60 345 (400-1¼)					
LNNAV MDA	520/55	481 (500-1)		520-1½	481 (500-1½)	
CIRCLING	520-1	470 (500-1)		740-2 690 (700-2)	740-2¼ 690 (700-2¼)	

SAVANNAH, GEORGIA
Amdt 2B 10SEP20

32°08'N-81°12'W

SAVANNAH/HILTON HEAD INTL (SAV)
RNAV (GPS) RWY 1

SE-4, 07 AUG 2025 to 04 SEP 2025

SE-4, 07 AUG 2025 to 04 SEP 2025