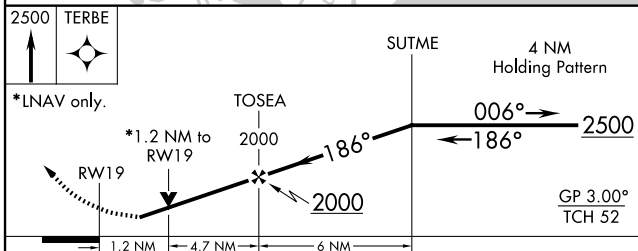
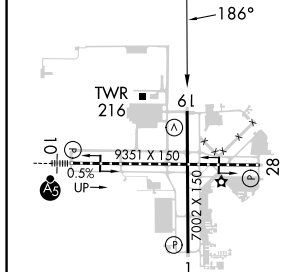
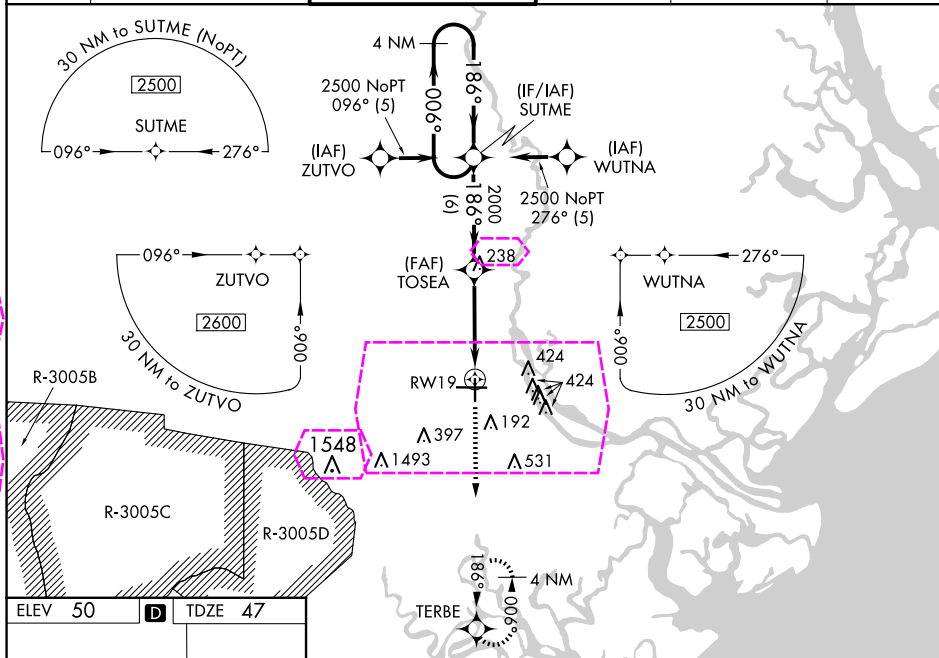


RNAV (GPS) RWY 19
SAVANNAH/HILTON HEAD INTL (SAV)

MISSED APPROACH: Climb to 2500 direct TERBE and hold.

ATIS 123.75	SAVANNAH APP CON ★ 125.3 371.875	SAVANNAH TOWER ★ 125.975 (CTAF) 0 257.8	GND CON 121.9 348.6	CLNC DEL 119.55 291.775	UNICOM 122.95
----------------	-------------------------------------	--	------------------------	----------------------------	------------------



CATEGORY	A	B	C	D
LPV DA	312-1 265 (300-1)			
RNAV/ VNAV DA	466-1½ 419 (500-1½)			
RNAV MDA	480-1 433 (500-1)	480-1¼ 433 (500-1¼)	480-1½ 433 (500-1½)	
C CIRCLING	520-1 470 (500-1)	740-2 690 (700-2)	740-2½ 690 (700-2½)	

TDZ/CL Rwy 10
REIL Rwys 19 and 28 **L**
HIRL Rwys 1-19 and 10-28 **L**

SAVANNAH, GEORGIA

32°08'N-81°12'W

SAVANNAH/HILTON HEAD INTL (SAV)

RNAV (GPS) RWY 19

SE-4, 10 JUL 2025 to 07 AUG, 2025

SE-4, 10 JUL 2025 to 07 AUG 2025

SAVANNAH, GEORGIA

AL-380 (FAA)

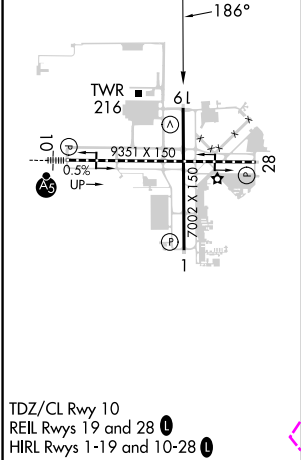
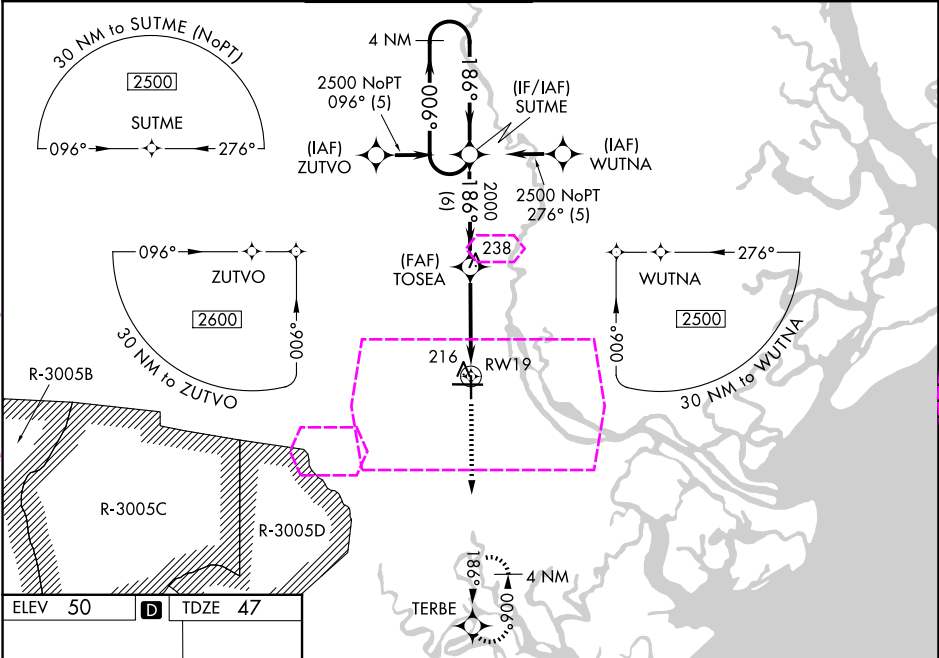
25219

WAAS CH 97314 W19A	APP CRS 186°	Rwy Ldg 7002 TDZE 47 Apt Elev 50
--	------------------------	---

RNAV (GPS) RWY 19
SAVANNAH/HILTON HEAD INTL (SAV)

RNP APCH-GPS.		MISSED APPROACH: Climb to 2500 direct TERBE and hold.
<p>T For uncompensated Baro-VNAV systems, LNAV/VNAV NA below -15°C or above 54°C.</p> <p>A When local altimeter setting not received, use Hilton Head Island altimeter setting and increase LPV DA to 378 feet; increase LNAV/VNAV DA to 532 feet and all visibilities ¼ SM; increase all MDAs 80 feet and LNAV visibility Cat C/D ½ SM, and Circling visibility Cat C/D ¼ SM. VDP and Baro-VNAV NA when using Hilton Head Island altimeter setting.</p>		

ATIS 123.75	SAVANNAH APP CON ★ 125.3 371.875	SAVANNAH TOWER ★ 125.975 (CTAF) 257.8	GND CON 121.9 348.6	CLNC DEL 119.55 291.775	UNICOM 122.95
-----------------------	--	---	-------------------------------	-----------------------------------	-------------------------



ELEV 50		TDZE 47
TWR 216		TOSEA
10		28
0.5%		2002 X 150
UP		1
186°		186°
2500		2500
TERBE		SUTME
*LNAV only.		TOSEA
RW19		2000
1.2 NM		4.7 NM
6 NM		6 NM
CATEGORY		A B C D
LPV DA		312-1 265 (300-1)
LNAV/VNAV DA		466-1½ 419 (500-1½)
LNAV MDA		480-1 433 (500-1) 480-1½ 433 (500-1½)
CIRCLING		520-1 470 (500-1) 740-2 690 (700-2) 740-2¼ 690 (700-2¼)

SAVANNAH, GEORGIA
Amdt 2B 06OCT22

32°08'N-81°12'W

SAVANNAH/HILTON HEAD INTL (SAV)
RNAV (GPS) RWY 19