

SAVANNAH, GEORGIA

AL-380 (FAA)

24081

WAAS CH 90114 W10A	APP CRS 097°	Rwy Idg 9351 TDZE 30 Apt Elev 50
--	------------------------	---

RNAV (GPS) RWY 10
SAVANNAH/HILTON HEAD INTL (SAV)

RNP APCH-GPS

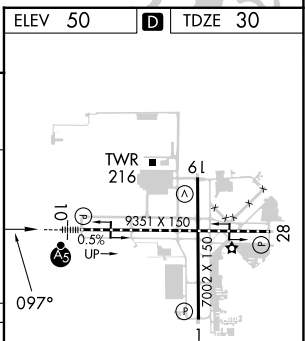
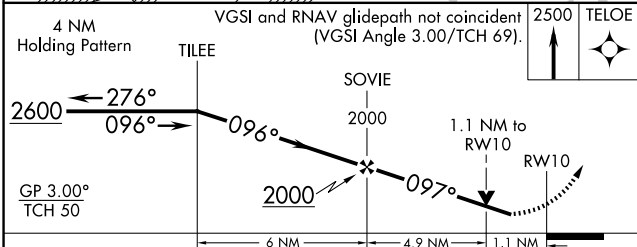
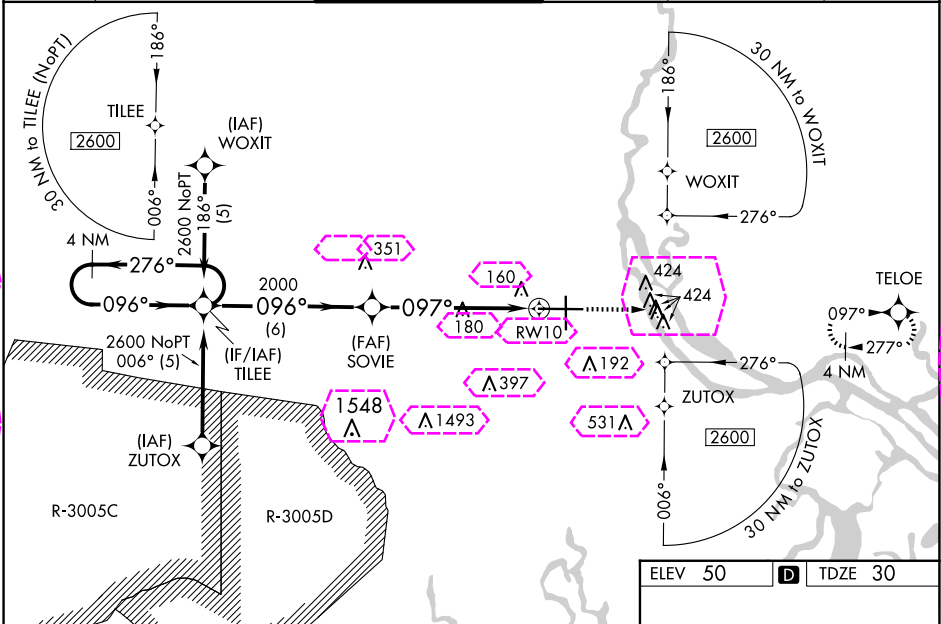
▼ For inop ALS increase LNAV/VNAV all Cats visibility to 1½ SM, increase LNAV Cat C/D to RVR 6000. For uncompensated Baro-VNAV systems, LNAV/VNAV NA below -15°C or above 54°C. When local altimeter setting not received, use Hilton Head Island altimeter setting and increase LPV DA to 296 feet and all visibilities to RVR 2000, increase LNAV/VNAV DA to 596 feet and all visibilities to 1¼ SM, increase all MDAs 80 feet and LNAV Cat C/D visibility to RVR 5000. For inop ALS when using Hilton Head Island altimeter setting, LNAV/VNAV all Cats visibility to 1½ SM, increase LNAV Cat C/D visibility to 1½ SM. VDP and Baro-VNAV NA when using Hilton Head Island altimeter setting.

MALSR



MISSED APPROACH:
Climb to 2500 direct
TELOE and hold.

ATIS 123.75	SAVANNAH APP CON★ 125.3 371.875	SAVANNAH TOWER★ 125.975 (CTAF) 257.8	GND CON 121.9 348.6	CLNC DEL 119.55 291.775	UNICOM 122.95
-----------------------	---	--	-------------------------------	-----------------------------------	-------------------------



CATEGORY	A	B	C	D
LPV DA	230/18 200 (200-½)			
LNAV/VNAV DA	530/50 500 (500-1)			
LNAV MDA	440/24 410 (400-½)	440/40 410 (400-¾)		
CIRCLING	520-1 470 (500-1)	740-2 690 (700-2)	740-2¼ 690 (700-2¼)	

SAVANNAH, GEORGIA
Amdt 2C 06OCT22

32°08'N-81°12'W

SAVANNAH/HILTON HEAD INTL (SAV)
RNAV (GPS) RWY 10

TDZ/CL Rwy 10
REIL Rwy 19 and 28
HIRL Rwy 1-19 and 10-28

SAVANNAH, GEORGIA

AL-380 (FAA)

25219

WAAS CH 9011A W10A	APP CRS 097°	Rwy Ldg 9351 TDZE 30 Apt Elev 50
--	------------------------	---

RNAV (GPS) RWY 10

SAVANNAH/HILTON HEAD INTL (SAV)

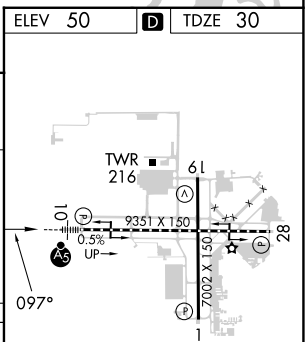
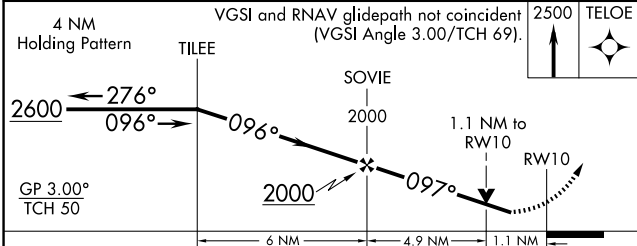
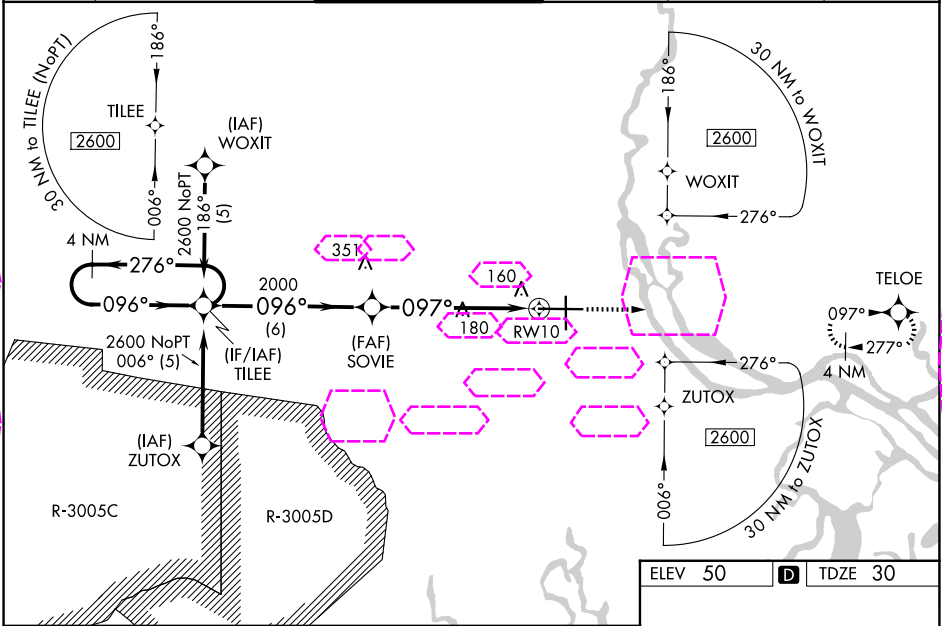
RNP APCH-GPS.

▼ For inop ALS increase LNAV/VNAV all Cats visibility to 1½ SM, increase LNAV Cat C/D to RVR 6000. For uncompensated Baro-VNAV systems, LNAV/VNAV NA below -15°C or above 54°C. When local altimeter setting not received, use Hilton Head Island altimeter setting and increase LPV DA to 296 feet and all visibilities to RVR 2000, increase LNAV/VNAV DA to 596 feet and all visibilities to 1¼ SM, increase all MDAs 80 feet and LNAV Cat C/D visibility to RVR 5000. For inop ALS when using Hilton Head Island altimeter setting, LNAV/VNAV all Cats visibility to 1½ SM, increase LNAV Cat C/D visibility to 1½ SM. VDP and Baro-VNAV NA when using Hilton Head Island altimeter setting.

MALSR

MISSED APPROACH:
Climb to 2500 direct
TELOE and hold.

ATIS 123.75	SAVANNAH APP CON★ 125.3 371.875	SAVANNAH TOWER★ 125.975 (CTAF) 257.8	GND CON 121.9 348.6	CLNC DEL 119.55 291.775	UNICOM 122.95
-----------------------	---	--	-------------------------------	-----------------------------------	-------------------------



CATEGORY	A	B	C	D
LPV DA	230/18 200 (200-½)			
LNAV/VNAV DA	530/50 500 (500-1)			
LNAV MDA	440/24 410 (400-½)		440/40 410 (400-¾)	
CIRCLING	520-1 470 (500-1)		740-2 690 (700-2) 740-2¼ 690 (700-2¼)	

TDZ/CL Rwy 10
REIL Rwy 19 and 28
HIRL Rwy 1-19 and 10-28

SAVANNAH, GEORGIA
Amdt 2C 06OCT22

32°08'N-81°12'W

SAVANNAH/HILTON HEAD INTL (SAV)
RNAV (GPS) RWY 10