

ILS or LOC RWY 1  
SAVANNAH/HILTON HEAD INTL (SAV)

**MISSED APPROACH:** Climb to 1000 then climb to 4000 on SAV VORTAC R-001 to TILLS INT/SAV 20 DME and hold.

**A**

[illegible]

1000 ↑	4000 ↑ SAV R-001	TILLS △	VGSI and ILS glidepath not coincident (VGSI Angle 3.00/TCH 74).			
*LOC Only.		MIZLU INT SAV <u>7.7</u>	TERBE SAV <u>14</u>			
CATEGORY	A	B	C	D		
S-ILS 1	239/40			200 (200-¾)		
S-LOC 1	480/55	441 (500-1)	480-1⅓	441 (500-1⅓)		
<b>C</b> CIRCLING	520-1	470 (500-1)	740-2 690 (700-2)	740-2¼ 690 (700-2¼)		

32°08'N-81°12'W

ILS or LOC RWY 1

SE-4, 10 JUL 2025 to 07 AUG 2025

SE-4, 10 JUL 2025 to 07 AUG 2025

SAVANNAH, GEORGIA

AL-380 (FAA)

25219

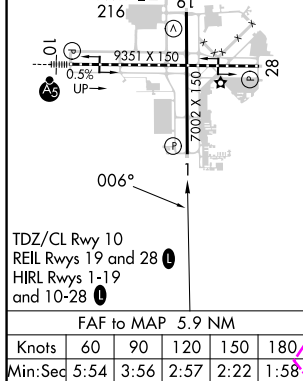
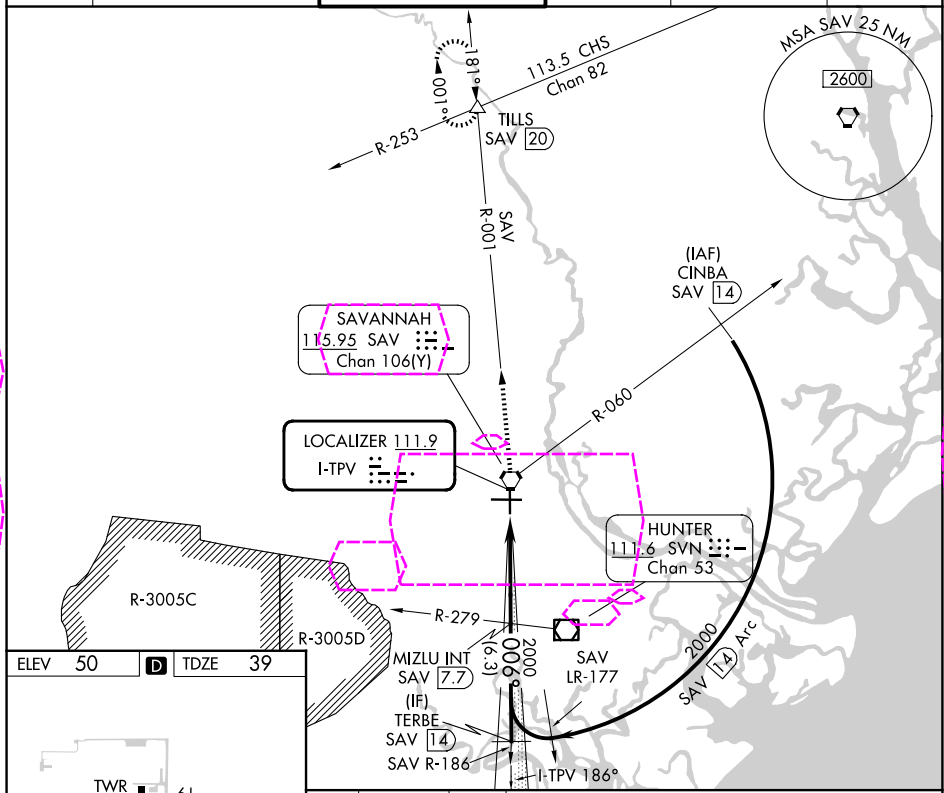
LOC I-TPV	APP CRS	Rwy Ldg	7002
111.9	006°	TDZE	39
		Apt Elev	50

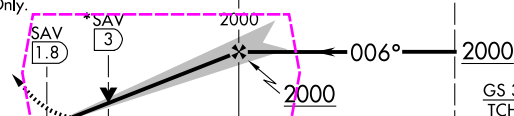
# ILS or LOC RWY 1

## SAVANNAH/HILTON HEAD INTL (SAV)

DME or RADAR required for procedure entry.	MISSED APPROACH: Climb to 1000 then climb to 4000 on SAV VORTAC R-001 to TILLS INT/SAV 20 DME and hold.
Autopilot coupled approach NA below 600.	

ATIS	SAVANNAH APP CON*	SAVANNAH TOWER*	GND CON	CLNC DEL	UNICOM
123.75	125.3 371.875	125.975 (CTAF) 0 257.8	121.9 348.6	119.55 291.775	122.95



1000 ↑ SAV R-001	4000 ↑ TILLS △	VGSI and ILS glidepath not coincident (VGSI Angle 3.00/TCH 74).		
		MIZLU INT SAV 7.7	TERBE SAV 14	
*LOC Only.				
				
CATEGORY	A	B	C	D
S-ILS 1	239/40		200 (200-¾)	
S-LOC 1	480/55	441 (500-1)	480-1⅓	441 (500-1⅓)
CIRCLING	520-1	470 (500-1)	740-2 690 (700-2)	740-2¼ 690 (700-2¼)

SAVANNAH, GEORGIA  
Amdt 8C 06OCT22

32°08'N-81°12'W

# SAVANNAH/HILTON HEAD INTL (SAV)

## ILS or LOC RWY 1

SE-4, 07 AUG 2025 to 04 SEP 2025

SE-4, 07 AUG 2025 to 04 SEP 2025