

SAVANNAH, GEORGIA

AL-380 (FAA)

24081

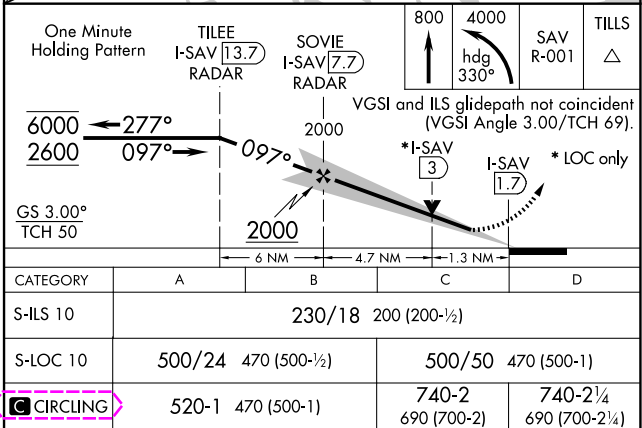
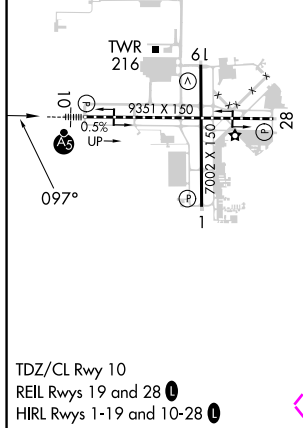
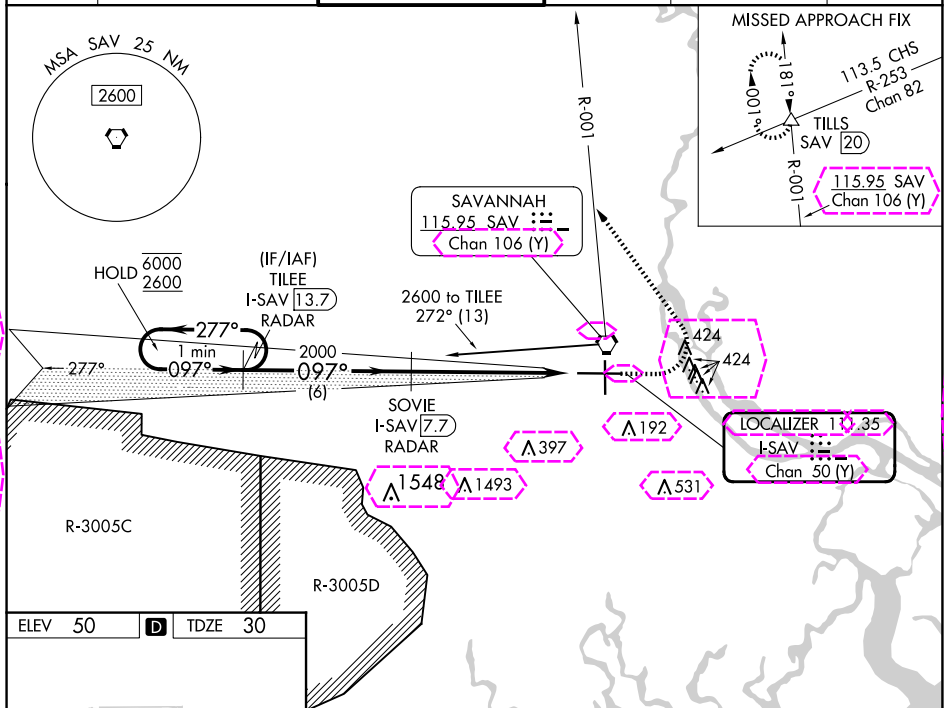
LOC I-SAV 111.35	APP CRS 097°	Rwy Idg 9351 TDZE 30 Apt Elev 50
Chan 50 (Y)		

ILS or LOC RWY 10

SAVANNAH/HILTON HEAD INTL (SAV)

DME required.	MALSR	MISSED APPROACH: Climb to 800 then climbing left turn to 4000 on heading 330° and SAV VORTAC R-001 to TILLS INT/SAV 20 DME and hold.
 For inop ALS, increase S-LOC 10 Cat C/D visibility to 1 3/8 SM.		

ATIS 123.75	SAVANNAH APP CON* 125.3 371.875	SAVANNAH TOWER* 125.975 (CTAF) 0 257.8	GND CON 121.9 348.6	CLNC DEL 119.55 291.775	UNICOM 122.95
-----------------------	---	--	-------------------------------	-----------------------------------	-------------------------



SAVANNAH, GEORGIA
Amdt 29 08NOV18

32°08'N-81°12'W

SAVANNAH/HILTON HEAD INTL (SAV)

ILS or LOC RWY 10

SE-4, 10 JUL 2025 to 07 AUG 2025

SE-4, 10 JUL 2025 to 07 AUG 2025

CIRCLING

SAVANNAH, GEORGIA

AL-380 (FAA)

25219

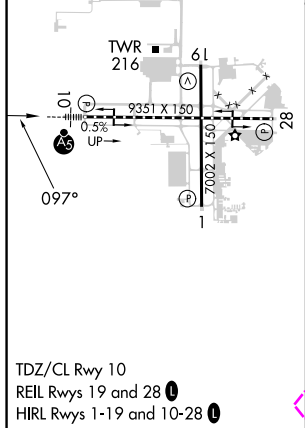
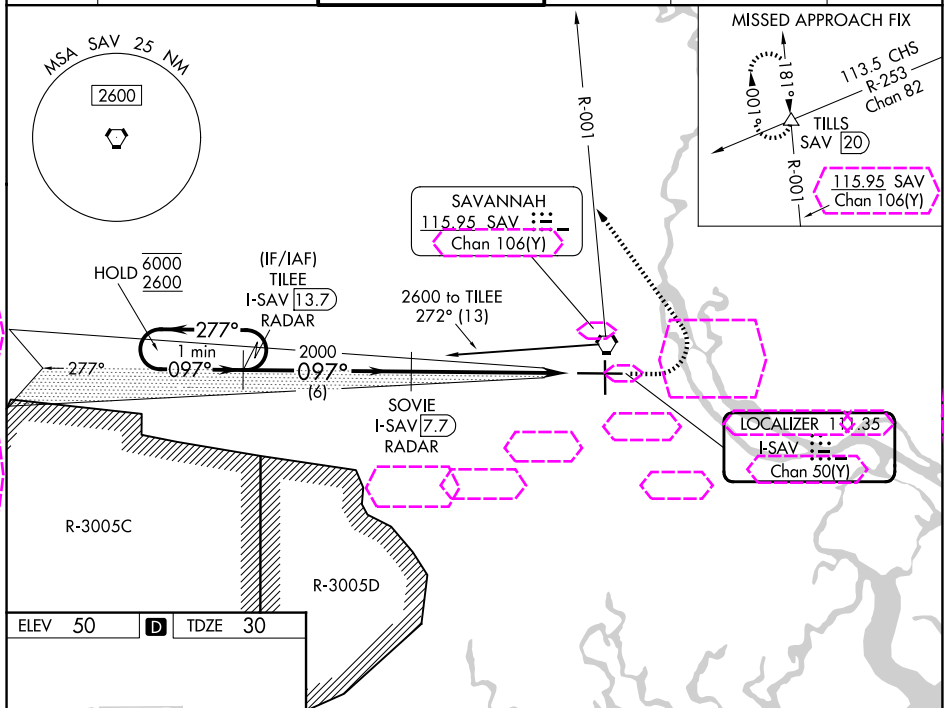
LOC I-SAV 111.35	APP CRS 097°	Rwy Ldg 9351 TDZE 30 Apt Elev 50
Chan 50(Y)		

ILS or LOC RWY 10

SAVANNAH/HILTON HEAD INTL (SAV)

DME required.	MALSR	MISSED APPROACH: Climb to 800 then climbing left turn to 4000 on heading 330° and SAV VORTAC R-001 to TILLS INT/SAV 20 DME and hold.
 For inop ALS, increase S-LOC 10 Cat C/D visibility to 1 3/8 SM.		

ATIS 123.75	SAVANNAH APP CON★ 125.3 371.875	SAVANNAH TOWER★ 125.975 (CTAF) 0 257.8	GND CON 121.9 348.6	CLNC DEL 119.55 291.775	UNICOM 122.95
-----------------------	---	--	-------------------------------	-----------------------------------	-------------------------



One Minute Holding Pattern	TILLEE I-SAV 13.7 RADAR	SOVIE I-SAV 7.7 RADAR	800 4000 hdg 330°	SAV R-001	TILLS △
6000 2600	277° 097°	097°	VGSI and ILS glidepath not coincident (VGSI Angle 3.00/TCH 69).		
GS 3.00° TCH 50	2000	2000	*I-SAV 3	I-SAV 1.7	*LOC only
6 NM 4.7 NM 1.3 NM					
CATEGORY	A	B	C	D	
S-ILS 10	230/18 200 (200-1/2)				
S-LOC 10	500/24	470 (500-1/2)	500/50	470 (500-1)	
CIRCLING	520-1	470 (500-1)	740-2 690 (700-2)	740-2 1/4 690 (700-2 1/4)	

SAVANNAH, GEORGIA
Amdt 29 08NOV18

32°08'N-81°12'W

SAVANNAH/HILTON HEAD INTL (SAV)

ILS or LOC RWY 10

SE-4, 07 AUG 2025 to 04 SEP 2025

SE-4, 07 AUG 2025 to 04 SEP 2025