

SAVANNAH, GEORGIA




AL-380 (FAA)

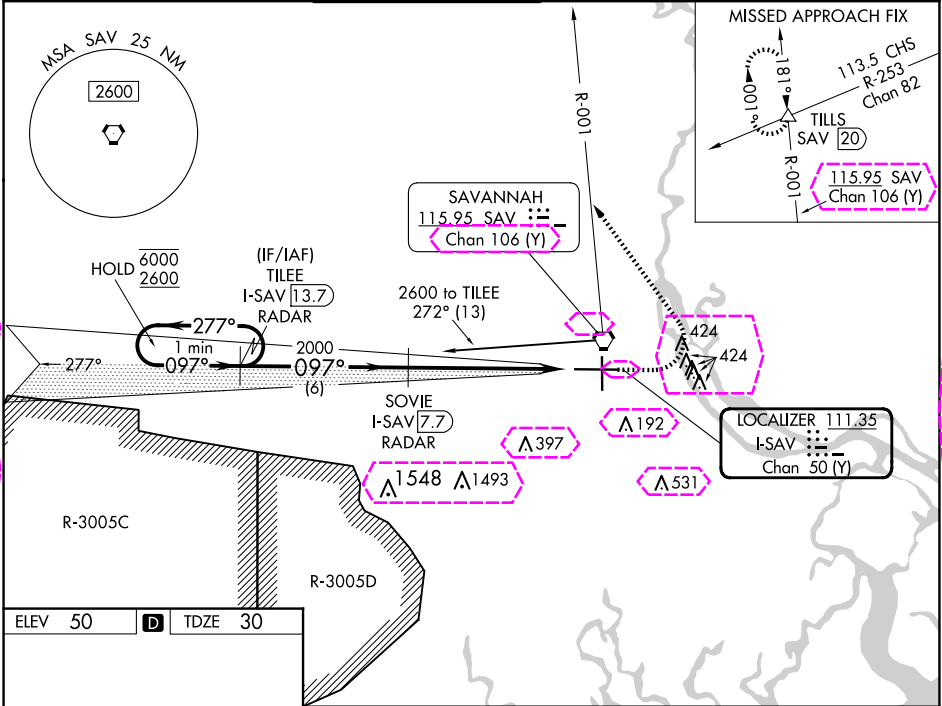
24081

LOC I-SAV 111.35	APP CRS 097°	Rwy Idg 9351 TDZE 30 Apt Elev 50
----------------------------	------------------------	---

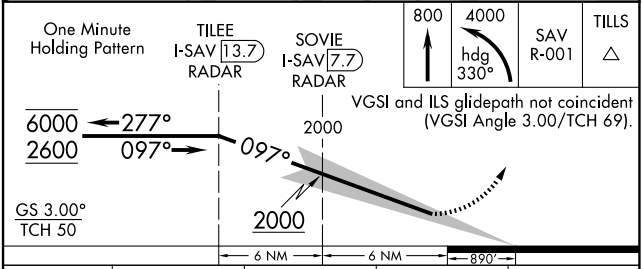
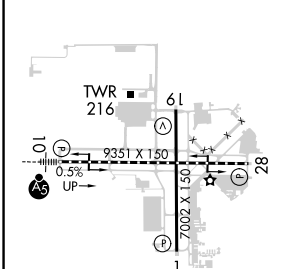
ILS RWY 10 (SA CAT I & II)

SAVANNAH/HILTON HEAD INTL (SAV)

DME required.			MALSR 	MISSED APPROACH: Climb to 800 then climbing left turn to 4000 on heading 330° and SAV VORTAC R-001 to TILLS INT/SAV 20 DME and hold.		
	SA CAT I: Requires specific OPSPEC, MSPEC, or LOA approval and use of HUD to DH. SA CAT II: Reduced lighting: Requires specific OPSPEC, MSPEC, or LOA approval and use of autoland or HUD to touchdown. Procedure NA when tower closed.					
						
ATIS 123.75	SAVANNAH APP CON★ 125.3 371.875	SAVANNAH TOWER★ 125.975 (CTAF) 0 257.8	GND CON 121.9 348.6	CNLC DEL 119.55 291.775	UNICOM 122.95	



ELEV 50	D	TDZE 30
---------	---	---------



CATEGORY	A	B	C	D
S-ILS 10	SA CAT I	RA 162/14	150 DA 180	
S-ILS 10	SA CAT II	RA 116/12	100 DA 130	

SA CATEGORY I & II ILS - SPECIAL AIRCREW & AIRCRAFT CERTIFICATION REQUIRED

SAVANNAH, GEORGIA
Amdt 29 08NOV18

32°08'N-81°12'W

SAVANNAH/HILTON HEAD INTL (SAV)
ILS RWY 10 (SA CAT I & II)

SE-4, 10 JUL 2025 to 07 AUG 2025

SE-4, 10 JUL 2025 to 07 AUG 2025

SAVANNAH, GEORGIA

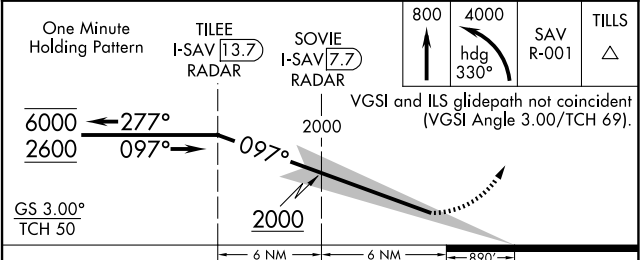
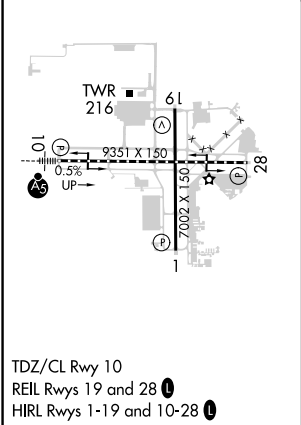
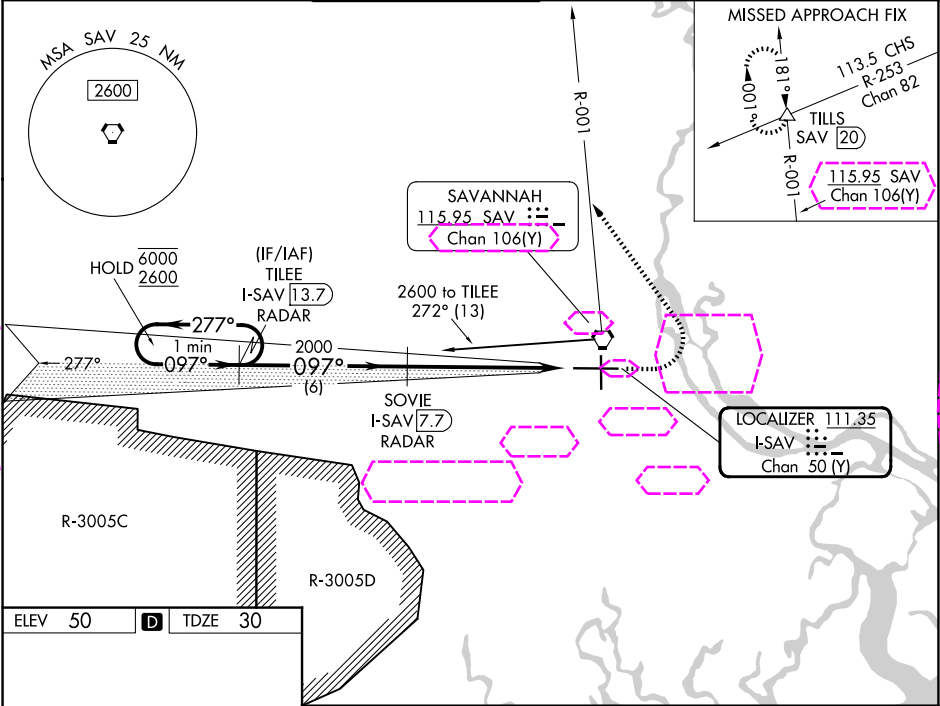
AL-380 (FAA)

25219

LOC I-SAV 111.35	APP CRS 097°	Rwy Ldg TDZE Apt Elev	9351 30 50
Chan 50(Y)			

ILS RWY 10 (SA CAT I & II)
SAVANNAH/HILTON HEAD INTL (SAV)

DME required.		MALSR		MISSED APPROACH: Climb to 800 then climbing left turn to 4000 on heading 330° and SAV VORTAC R-001 to TILLS INT/SAV 20 DME and hold.	
SA CAT I: Requires specific OPSPEC, MSPEC, or LOA approval and use of HUD to DH. SA CAT II: Reduced lighting: Requires specific OPSPEC, MSPEC, or LOA approval and use of autoland or HUD to touchdown. Procedure NA when tower closed.		A5			
ATIS 123.75	SAVANNAH APP CON★ 125.3 371.875	SAVANNAH TOWER★ 125.975 (CTAF) 0 257.8	GND CON 121.9 348.6	CLNC DEL 119.55 291.775	UNICOM 122.95



CATEGORY	A	B	C	D
S-ILS 10	SA CAT I	RA 162/14	150 DA 180	
S-ILS 10	SA CAT II	RA 116/12	100 DA 130	

SA CATEGORY I & II ILS - SPECIAL AIRCREW & AIRCRAFT CERTIFICATION REQUIRED

SAVANNAH, GEORGIA
Amdt 29 08NOV18

32°08'N-81°12'W

SAVANNAH/HILTON HEAD INTL (SAV)
ILS RWY 10 (SA CAT I & II)

SE-4, 07 AUG 2025 to 04 SEP 2025

SE-4, 07 AUG 2025 to 04 SEP 2025