

SANTA BARBARA, CALIFORNIA

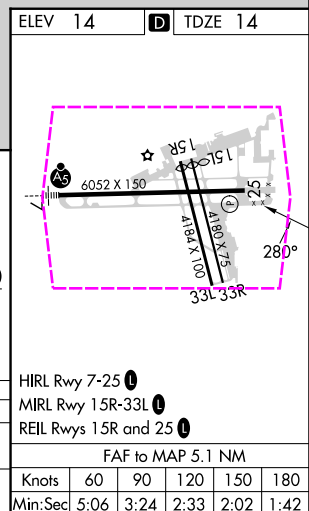
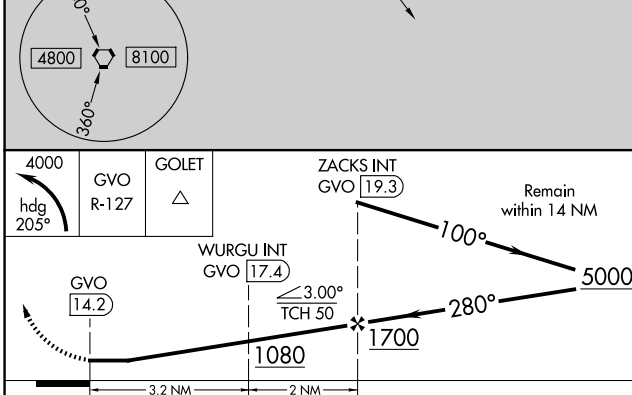
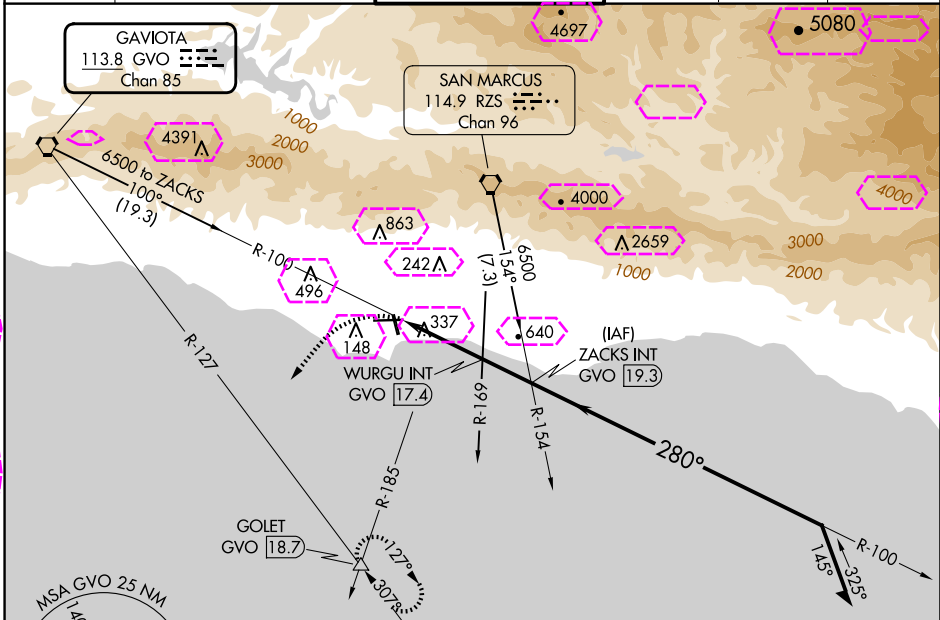
VORTAC GVO <u>113.8</u> Chan 85	APP CRS 280°	Rwy Ldg 6052 TDZE 14 Apt Elev 14
---	------------------------	---

VOR RWY 25
SANTA BARBARA MUNI (SBA)

T Circling Rwy 15L/R and 33L/R NA at night. Rwy 25 helicopter visibility reduction below 1 SM NA. Circling NA for Cats C and D north of Rwy 7-25. Procedure NA at night. When local altimeter setting not received, use OXR altimeter setting and increase all MDAs 100 feet and S-25 visibility Cat B/C/D ½ SM and Circling visibility Cat B/C ¼ SM.

MISSED APPROACH: Climbing left turn to 4000 on heading 205° and GVO R-127 to GOLET INT and hold, continue climb-in-hold to 4000.

ATIS 132.65	SANTA BARBARA APP CON★ 120.55 319.15 (151°-329°) 125.4 291.1 (330°-150°)	SANTA BARBARA TOWER★ 119.7 (CTAF) 0 254.35	GND CON 121.7	CLNC DEL 132.9	UNICOM 122.95
-----------------------	--	---	-------------------------	--------------------------	-------------------------



SANTA BARBARA, CALIFORNIA
Amdt 7 20FEB25

34°26'N-119°50'W

SANTA BARBARA MUNI (SBA)
VOR RWY 25

SANTA BARBARA, CALIFORNIA

AL-378 (FAA)

25219

VORTAC GVO	APP CRS	Rwy Ldg
113.8	280°	6052
Chan 85		TDZE 14
		Apt Elev 14

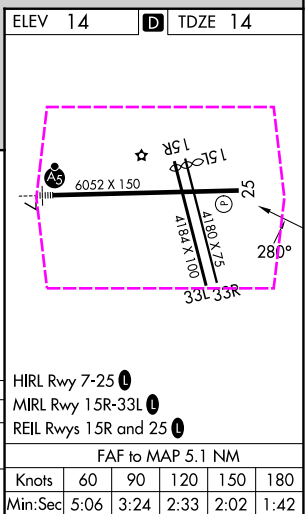
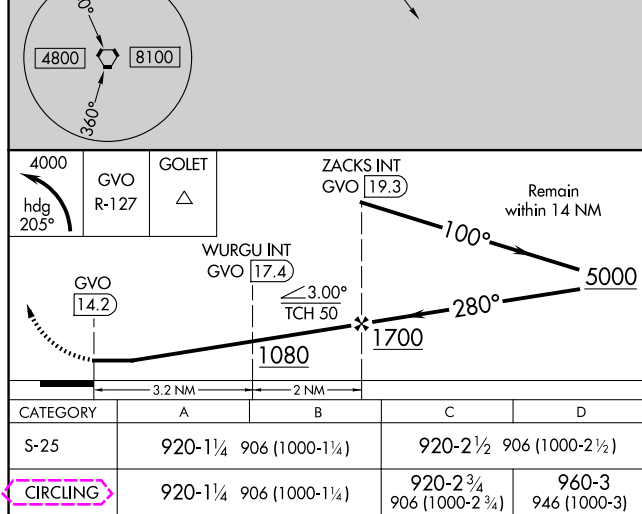
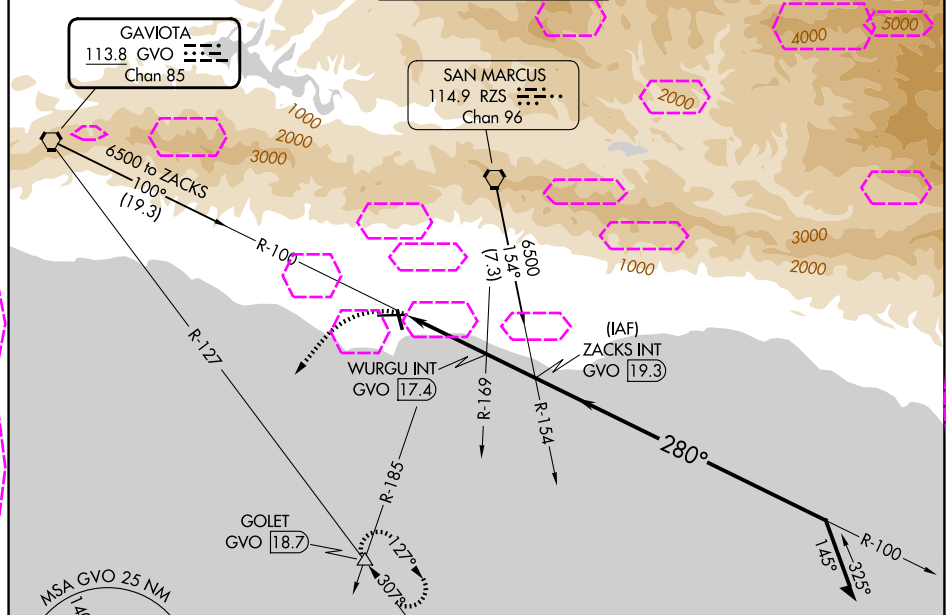
VOR RWY 25

SANTA BARBARA MUNI (SBA)

⚠ Circling Rwy 15L/R and 33L/R NA at night. Rwy 25 helicopter visibility reduction below 1 SM NA. Circling NA for Cats C and D north of Rwy 7-25. Procedure NA at night. When local altimeter setting not received, use OXR altimeter setting and increase all MDAs 100 feet and S-25 visibility Cat B/C/D ½ SM and Circling visibility Cat B/C ¼ SM.

MISSED APPROACH: Climbing left turn to 4000 on heading 205° and GVO R-127 to GOLET INT and hold, continue climb-in-hold to 4000.

ATIS 132.65	SANTA BARBARA APP CON* 120.55 319.15 (151°-329°) 125.4 291.1 (330°-150°)	SANTA BARBARA TOWER* 119.7 (CTAF) 0 254.35	GND CON 121.7	CLNC DEL 132.9	UNICOM 122.95
----------------	--	---	------------------	-------------------	------------------



SW-3, 07 AUG 2025 to 04 SEP 2025

SW-3, 07 AUG 2025 to 04 SEP 2025