

WAAS CH <b>78306</b> <b>W07A</b>	APP CRS <b>074°</b>	Rwy Ldg <b>6052</b> TDZE <b>13</b> Apt Elev <b>14</b>
--	------------------------	---

RNAV (GPS) RWY 7  
SANTA BARBARA MUNI (SBA)

RNP APCH - GPS.

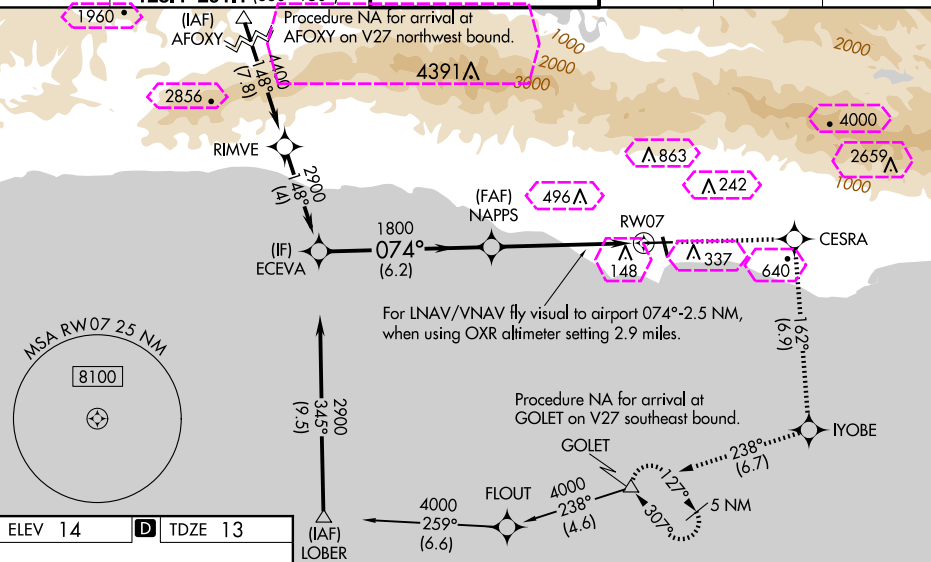
**T** For uncompensated Baro-VNAV systems, LNAV/VNAV NA below 3°C or above 54°C. Circling Rwy 15L/R and 33L/R NA at night. Rwy 7 helicopter visibility reduction below RVR 4000 NA. When local altimeter setting not received, use OXR altimeter setting and increase LPV DA to 392 feet; increase LNAV/VNAV DA to 686 feet and all visibilities ¼ SM. Increase all MDAs 100 feet, and LNAV visibility Cat C and D ½ SM, and Circling visibility Cat A/C SM. VDP and Baro-VNAV NA when using OXR altimeter setting. For inop ALS, increase LPV all Cats visibility to RVR 4500 and LNAV Cat A to RVR 5500 and Cat C/D to 2 ½ SM. For inop ALS when using OXR altimeter setting, increase LPV all Cats visibility to RVR 5500 and LNAV/VNAV all Cats visibility to 1 ½ SM. Circling NA for Cats C and D north of Rwy 7-25.

MALSR

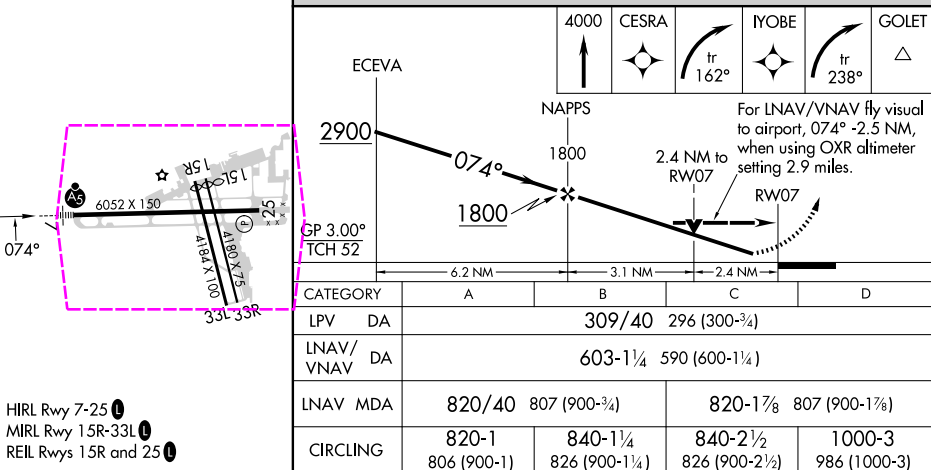


**MISSED APPROACH:** Climb to 4000 direct CESRA and right turn on track 162° to YOBE and right turn on track 238° to GOLET and hold, continue climb-in-hold to 4000.

ATIS 132.65	SANTA BARBARA APP CON★ 120.55 319.15 (151°-329°) 125.4 291.1 (330°-130°)	SANTA BARBARA TOWER★ 119.7 (CTAF) 0 254.35	GND CON 121.7	CLNC DEL 132.9	UNICOM 122.95
----------------	--	---	------------------	-------------------	------------------



ELEV 14	<b>D</b>	TDZE 13
---------	----------	---------



SANTA BARBARA, CALIFORNIA

Amdt 1 20FEB25

34°26'N-119°50'W

SANTA BARBARA MUNI (SBA)

## RNAV (GPS) RWY 7

SW-3, 10 JUL 2025 to 07 AUG 2025

SW-3, 10 JUL 2025 to 07 AUG 2025

WAAS CH <b>78306</b> <b>W07A</b>	APP CRS <b>074°</b>	Rwy Ldg TDZE Apt Elev	<b>6052</b> <b>13</b> <b>14</b>
--	------------------------	-----------------------------	---------------------------------------

RNAV (GPS) RWY 7

SANTA BARBARA MUNI (SBA)

RNP APCH - GPS.

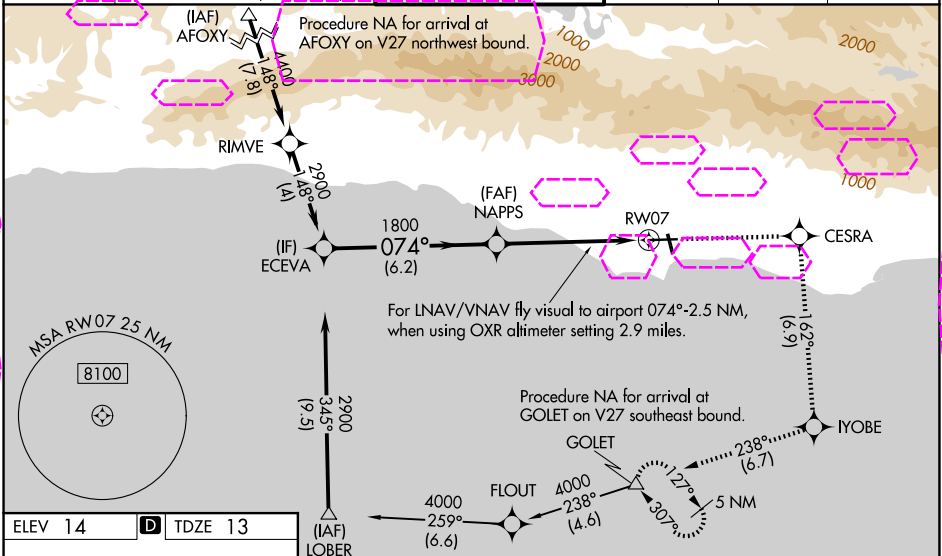
⚠

For uncompensated Baro-VNAV systems, LNAV/VNAV NA below 3°C or above 54°C.  
⚠ Circling Rwy 15L/R and 33L/R NA at night. Rwy 7 helicopter visibility reduction below RVR 4000 NA. When local altimeter setting not received, use OXR altimeter setting and increase LPV DA to 392 feet; increase LNAV/VNAV DA to 686 feet and all visibilities ¼ SM. Increase all MDAs 100 feet, and LNAV visibility Cat C and D ½ SM, and Circling visibility Cat A/C ½ SM. VDP and Baro-VNAV NA when using OXR altimeter setting. For inop ALS, increase LPV all Cats visibility to RVR 4500 and LNAV Cat A to RVR 5500 and Cat C/D to 2 ½ SM. For inop ALS when using OXR altimeter setting, increase LPV all Cats visibility to RVR 5500 and LNAV/VNAV all Cats visibility to 1 ½ SM. Circling NA for Cats C and D north of Rwy 7-25.

MALSR

MISSED APPROACH: Climb to 4000 direct CESRA and right turn on track 162° to IYOBE and right turn on track 238° to GOLET and hold, continue climb-in-hold to 4000.

ATIS <b>132.65</b>	SANTA BARBARA APP CON ★ <b>120.55 319.15</b> (151°-329°) <b>125.4 291.1</b> (330°-150°)	SANTA BARBARA TOWER ★ <b>119.7</b> (CTAF) <b>0 254.35</b>	GND CON <b>121.7</b>	CLNC DEL <b>132.9</b>	UNICOM <b>122.95</b>
-----------------------	---	--	-------------------------	--------------------------	-------------------------



ELEV 14	TDZE 13
---------	---------

4000	CESRA	IYOBE	GOLET
↑	✧	tr 162°	tr 238°

ECEVA

NAPPS

For LNAV/VNAV fly visual to airport, 074° -2.5 NM, when using OXR altimeter setting 2.9 miles.

RWY 7

CATEGORY	A	B	C	D
LPV DA		309/40	296 (300-¾)	
LNAV/VNAV DA		603-1¼	590 (600-1¼)	
LNAV MDA	820/40	807 (900-¾)	820-1⅞	807 (900-1⅞)
CIRCLING	820-1 806 (900-1)	840-1¼ 826 (900-1¼)	840-2½ 826 (900-2½)	1000-3 986 (1000-3)