

(PITBL,PITBL1) 16315  
PITBL ONE ARRIVAL (RNAV)

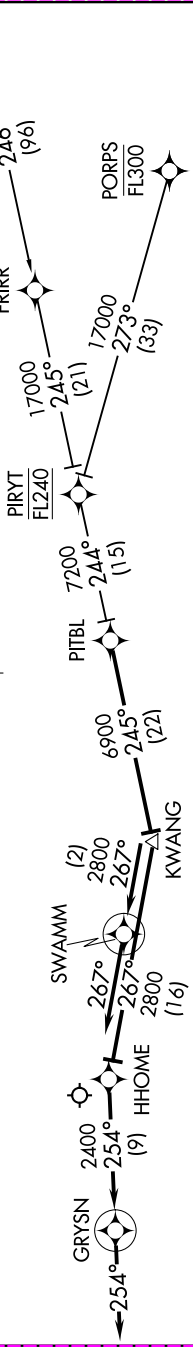
AL-378 (FAA)

SANTA BARBARA MUNI (SBA)  
SANTA BARBARA, CALIFORNIA

SW-3, 10 JUL 2025 to 07 AUG 2025

SANTA BARBARA APP CON  
120.55 319.15  
ATIS  
132.65

NOTE: RADAR required.  
NOTE: RNAV 1.  
NOTE: DME/DME/IRU or GPS required.  
NOTE: Turbojet and turboprop aircraft only.  
NOTE: Landing Rwy 7 expect to cross GRYSN at 4000.  
NOTE: For non GPS-equipped aircraft, FIM must be operational.



NOTE: Chart not to scale.

ARRIVAL ROUTE DESCRIPTION

HECTOR TRANSITION (HEC.PITBL1)  
PORPS TRANSITION (PORPS.PITBL1)

LANDING RUNWAY 7: From PITBL on track 245° to KWANG, then on track 267° to HHOME, then on track 254° to GRYSN, then on track 254°. Expect RADAR vectors to final approach course.  
LANDING RUNWAY 25: From PITBL on track 245° to KWANG, then on track 267° to SWAMM, then on track 267°. Expect RADAR vectors to final approach course.

PITBL ONE ARRIVAL (RNAV)  
(PITBL,PITBL1) 10NOV16

SANTA BARBARA, CALIFORNIA  
SANTA BARBARA MUNI (SBA)

SW-3, 10 JUL 2025 to 07 AUG 2025

(PITBL PITBL2) 25219

PITBL TWO ARRIVAL (RNAV)

AL-378 (FAA)

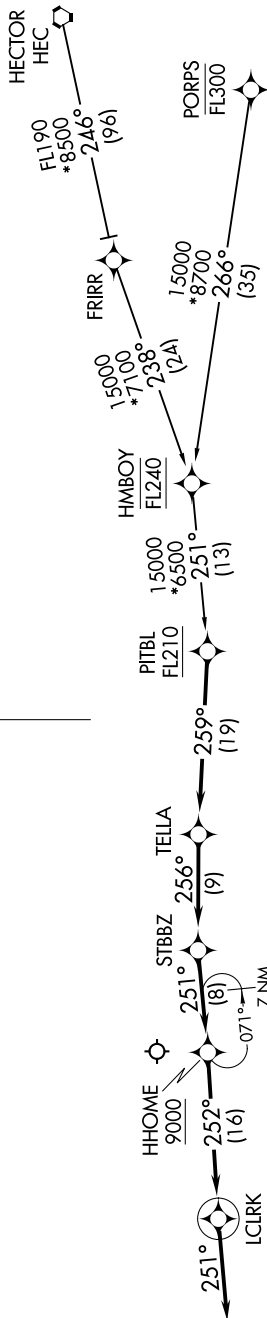
SANTA BARBARA MUNI (SBA)  
SANTA BARBARA, CALIFORNIA

RNAV 1 - DME/DME/IRU or GPS.  
RADAR required.

NOTE: Jet and turboprop aircraft only.

NOTE: Chart not to scale.

N



Ldg Rwy 7, 25

ARRIVAL ROUTE DESCRIPTION

HECTOR TRANSITION (HEC.PITBL2)

PORPS TRANSITION (PORPS.PITBL2)

From PITBL on track 259° to TELLA.

LANDING RUNWAYS 7, 25: From TELLA on track 256° to STBBZ, then on track 251° to cross HHOME at or above 9000, then on track 252° to cross LCLRK at 4000, then on track 251°. Expect RADAR vectors to final approach course.

SW-3, 07 AUG 2025 to 04 SEP 2025

PITBL TWO ARRIVAL (RNAV)

(PITBL PITBL2) 07AUG25

SANTA BARBARA, CALIFORNIA  
SANTA BARBARA MUNI (SBA)