

SANTA BARBARA, CALIFORNIA

AL-378 (FAA)

25163

LOC/DME I-SBA	APP CRS	Rwy Ldg	6052
110.3	075°	TDZE	13
Chan 40		Apt Elev	14

ILS or LOC RWY 7

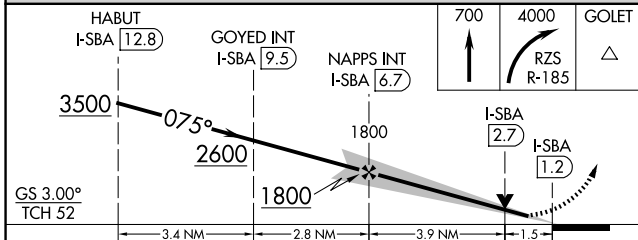
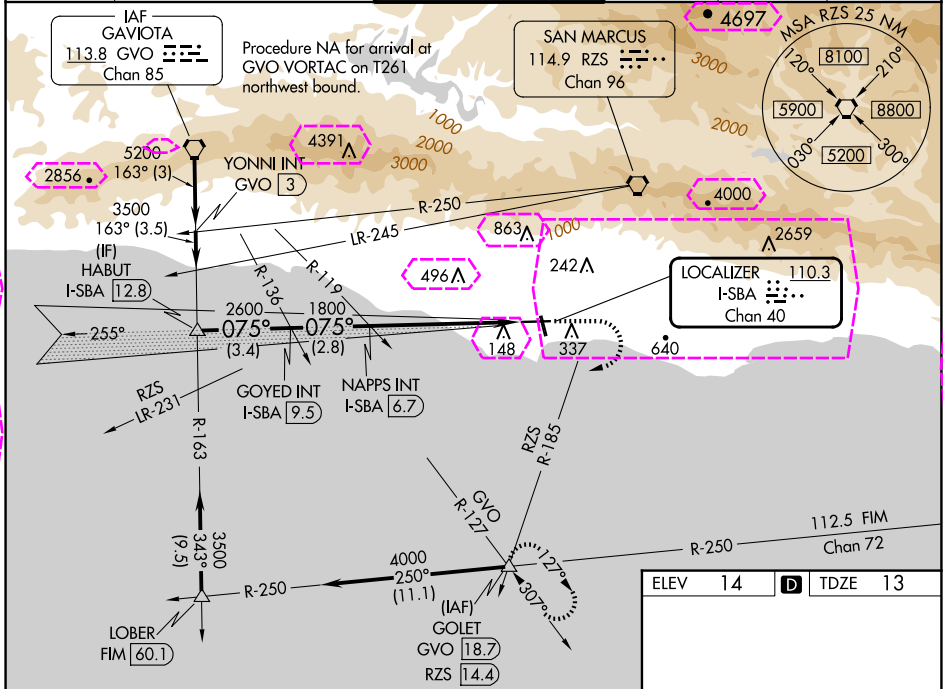
SANTA BARBARA MUNI (SBA)

V VDP NA when using OXR altimeter setting. Circling Rwy 15 L/R and 33 L/R NA at night. Rwy 7 helicopter visibility reduction below RVR 4000 NA. When local altimeter setting not received, use OXR altimeter setting and increase S-ILS 7 DA to 386 feet; increase all MDAs 100 feet; and Circling visibility Cat A/C ¼ SM. For inop ALS when using OXR altimeter setting, increase S-ILS 7 all Cats visibility to RVR 5000, and S-LOC 7 Cat A/B to RVR 5500. Circling NA for Cats C and D north of Rwy 7-25. For inop ALS, increase S-ILS 7 all Cats visibility to RVR 4500 and S-LOC 7 Cat A/B to RVR 5500.



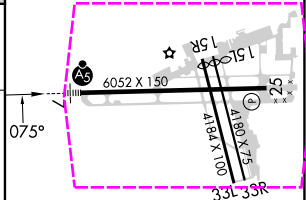
MISSED APPROACH:
Climb to 700 then climbing right turn to 4000 on RZS VORTAC R-185 to GOLET INT/RZS 14.4 DME and hold, continue climb-in-hold to 4000.




ATIS	SANTA BARBARA APP CON*	SANTA BARBARA TOWER*	GND CON	CLNC DEL	UNICOM
132.65	120.55 319.15 (151°-329°) 125.4 291.1 (330°-150°)	119.7 (CTAF) 0 254.35	121.7	132.9	122.95



CATEGORY	A	B	C	D
S-ILS 7		303/40	290 (300-¾)	
S-LOC 7	560/40	547 (600-¾)	560/55	547 (600-1)
CIRCLING	800-1 786 (800-1)	840-1¼ 826 (900-1¼)	840-2½ 826 (900-2½)	1000-3 986 (1000-3)

ELEV	14	TDZE	13
------	----	------	----



HIRL Rwy 7-25 					
MIRL Rwy 15R-33L 					
REIL Rws 15R and 25 					
FAF to MAP 5.5 NM					
Knots	60	90	120	150	180
Min:Sec	5:30	3:40	2:45	2:12	1:50

SANTA BARBARA, CALIFORNIA
Amdt 6 20FEB25

34°26'N-119°50'W

SANTA BARBARA MUNI (SBA)
ILS or LOC RWY 7

SW-3, 10 JUL 2025 to 07 AUG 2025

SW-3, 10 JUL 2025 to 07 AUG 2025

LOC/DME I-SBA <u>110.3</u> Chan 40	APP CRS 075°	Rwy Ldg 6052 TDZE 13 Apt Elev 14
--	------------------------	---

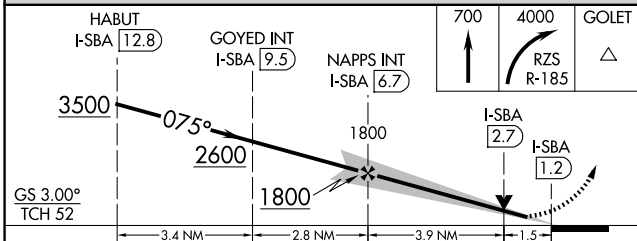
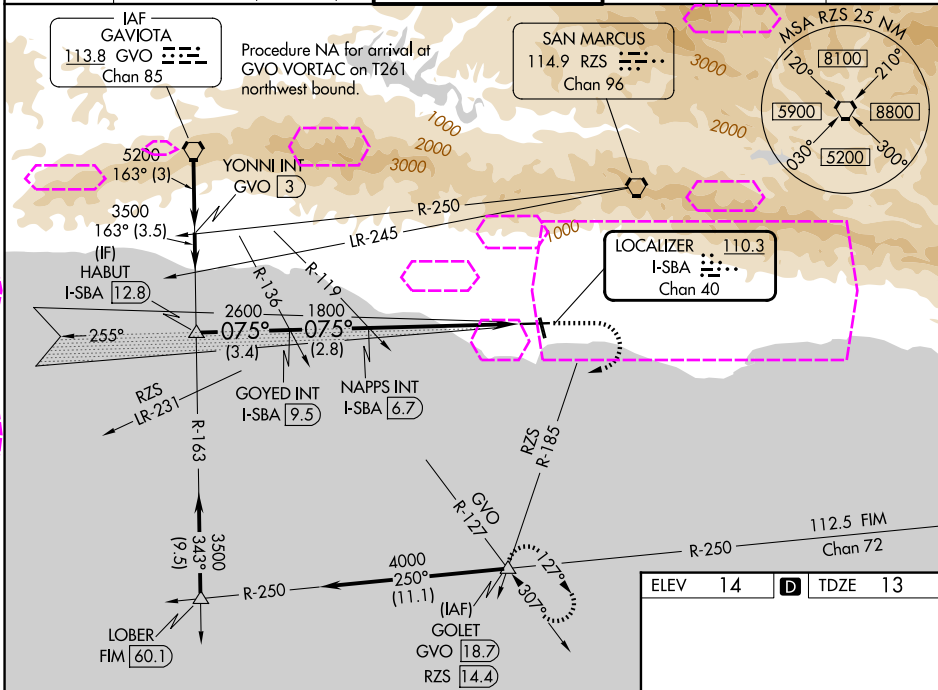
ILS or LOC RWY 7

V VDP NA when using OXR altimeter setting. Circling Rwy 15 L/R and 33 L/R NA at night. Rwy 7 helicopter visibility reduction below RVR 4000 NA. When local altimeter setting not received, use OXR altimeter setting and increase S-ILS 7 DA to 386 feet; increase all MDAs 100 feet; and Circling visibility Cat A/C ¼ SM. For inop ALS when using OXR altimeter setting, increase S-ILS 7 all Cats visibility to RVR 5000, and S-LOC 7 Cat A/B to RVR 5500. Circling NA for Cats C and D north of Rwy 7-25. For inop ALS, increase S-ILS 7 all Cats visibility to RVR 4500 and S-LOC 7 Cat A/B to RVR 5500.

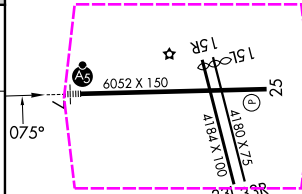
MALSR

MISSED APPROACH:
Climb to 700 then climbing
right turn to 4000 on
RZS VORTAC R-185 to
GOLET INT/RZS 14.4 DME
and hold, continue
climb-in-hold to 4000.

ATIS 132.65	SANTA BARBARA APP CON★ 120.55 319.15 (151°-329°) 125.4 291.1 (330°-150°)	SANTA BARBARA TOWER★ 119.7 (CTAF) 0 254.35	GND CON 121.7	CLNC DEL 132.9	UNICOM 122.95
----------------	--	---	------------------	-------------------	------------------



CATEGORY	A	B	C	D
S-ILS 7	303/40 290 (300-¾)			
S-LOC 7	560/40 547 (600-¾)		560/55 547 (600-1)	
CIRCLING	800-1 786 (800-1)	840-1¼ 826 (900-1¼)	840-2½ 826 (900-2½)	1000-3 986 (1000-3)



HIRL Rwy 7-25 **L**
MIRL Rwy 15R-33L **L**
REIL Rwys 15R and 25 **L**

FAF to MAP 5.5 NM					
Knots	60	90	120	150	180
Min:Sec	5:30	3:40	2:45	2:12	1:50

SW-3, 07 AUG 2025 to 04 SEP 2025

SW-3, 07 AUG 2025 to 04 SEP 2025