

STINSON MUNI (SSF)

SC-3, 10 JUL 2025 to 07 AUG 2025

(YODUH2.YODUH) 25219

AL-372 (FAA)

STINSON MUNI (SSF)
SAN ANTONIO, TEXAS

YODUH TWO DEPARTURE (RNAV)

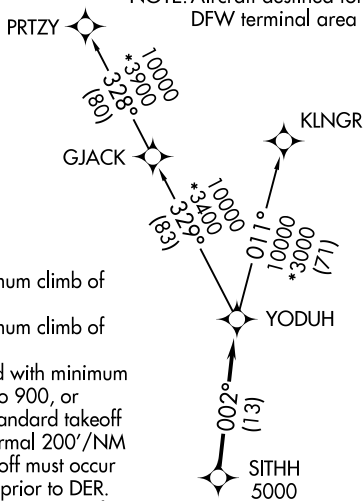
SAN ANTONIO DEP CON
125.7 290.225
ATIS
128.8
CLNC DEL (When twr closed)
121.7
GND CON
121.7 379.9
STINSON TOWER ★
118.2 379.9

RNAV 1 - DME/DME IRU or GPS.

RADAR required for non-GPS equipped aircraft.
RADAR required.

**TOP ALTITUDE:
ASSIGNED BY ATC**

NOTE: Aircraft destined for airports north/northeast of
DFW terminal area must file the KLNGR Transition.



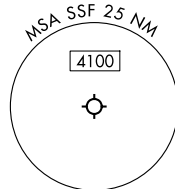
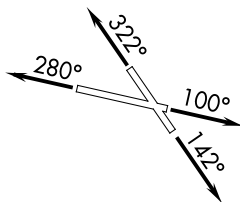
TAKEOFF MINIMUMS

Rwy 10: Standard with minimum climb of
230'/NM to 1900.

Rwy 14: Standard with minimum climb of
220'/NM to 1900.

Rwy 28: 300-1½ or standard with minimum
climb of 230'/NM to 900, or
alternatively, with standard takeoff
minimums and a normal 200'/NM
climb gradient, takeoff must occur
no later than 1800' prior to DER.

Rwy 32: Standard with minimum climb of
230'/NM to 1700.



NOTE: Chart not to scale.

DEPARTURE ROUTE DESCRIPTION

TAKEOFF RUNWAY 10: Climb on heading 100° or as assigned by ATC, for vectors
to SITHH, thence. . .

TAKEOFF RUNWAY 14: Climb on heading 142° or as assigned by ATC, for vectors
to SITHH, thence. . .

TAKEOFF RUNWAY 28: Climb on heading 280° or as assigned by ATC, for vectors
to SITHH, thence. . .

TAKEOFF RUNWAY 32: Climb on heading 322° or as assigned by ATC, for vectors
to SITHH, thence. . .

. . . on track 002° to YODUH, then on transition. Maintain ATC assigned altitude.
Expect filed altitude 10 minutes after departure.

KLNGR TRANSITION (YODUH2.KLNGR)
PRTZY TRANSITION (YODUH2.PRTZY)

YODUH TWO DEPARTURE (RNAV)
(YODUH2.YODUH) 07AUG25

SAN ANTONIO, TEXAS
STINSON MUNI (SSF)

SC-3, 07 AUG 2025 to 04 SEP 2025
SC-3, 07 AUG 2025 to 04 SEP 2025