

SAN ANTONIO, TEXAS

AL-372 (FAA)

25107

VOR SSF	APP CRS	Rwy Idg	3530
108.4	337°	TDZE	571
		Apt Elev	578

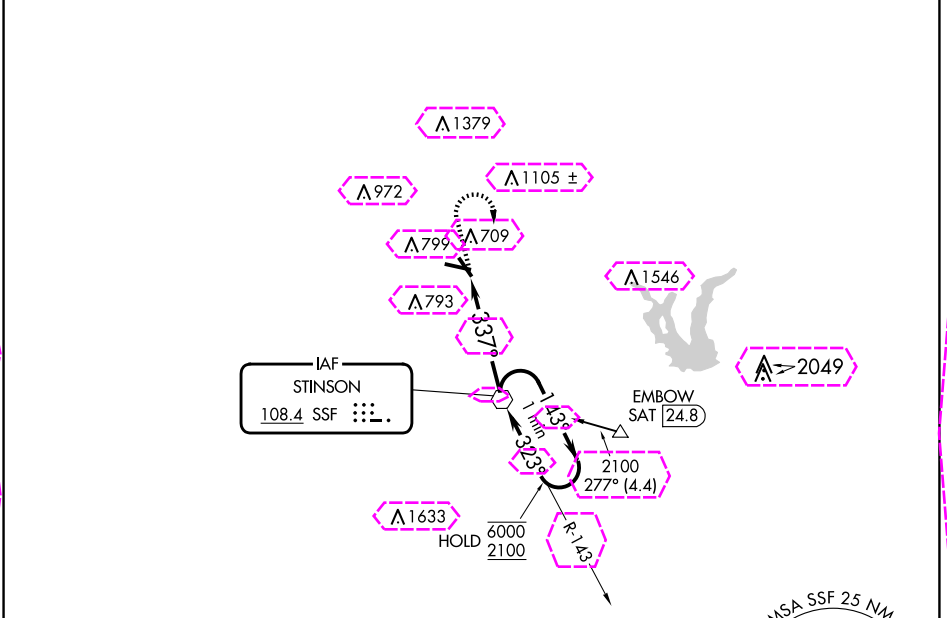
VOR RWY 32

STINSON MUNI (SSF)

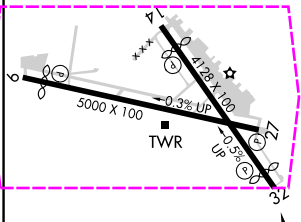
▼ Rwy 32 helicopter visibility reduction below 1 SM NA. Straight-in Rwy 32 NA at night, Circling Rwy 9, 14, and 32 NA at night.

MISSED APPROACH: Climb to 1400 then climbing right turn to 2500 direct SSF VOR and hold.


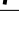
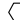
ATIS	SAN ANTONIO APP CON	STINSON TOWER*	GND CON	CLNC DEL	UNICOM
128.8	125.7 290.225	118.2 (CTAF) 379.9	121.7 379.9	121.7 (When twr closed)	122.95



ELEV 578	D	TDZE 571
----------	---	----------



REIL	Rwys 9, 14, 27 and 32
MRL	Rwys 9-27 and 14-32
FAF to MAP 4.6 NM	
Knots	60 90 120 150 180
Min:Sec	4:36 3:04 2:18 1:50 1:32

1400	2500	SSF	<div>One Minute Holding Pattern</div>	
				
<div>SSF VOR</div> <div><div>143°</div><div>323°</div><div>6000</div><div>2100</div></div> <div><div>337°</div><div>≤ 3.07°</div><div>TCH 40</div></div> <div><div>4.6 NM</div></div>				
CATEGORY	A	B	C	D
S-32	1020-1 449 (500-1)		1020-1 ₈ 449 (500-1 ₈)	NA
CIRCLING	1040-1 462 (500-1)	1120-1 542 (600-1)	1260-2 682 (700-2)	NA

SAN ANTONIO, TEXAS
Amdt 4C 22APR21

29°20'N-98°28'W

STINSON MUNI (SSF)
VOR RWY 32

SC-3, 10 JUL 2025 to 07 AUG 2025

SC-3, 10 JUL 2025 to 07 AUG 2025

SAN ANTONIO, TEXAS

AL-372 (FAA)

25219

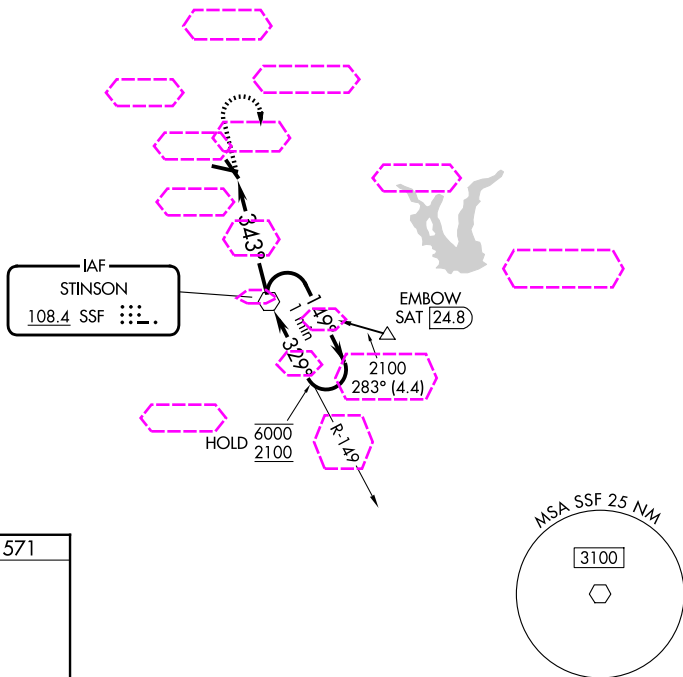
VOR SSF 108.4	APP CRS 343°	Rwy Ldg TDZE 571 Apt Elev 578
-------------------------	------------------------	---

VOR RWY 32
STINSON MUNI (SSF)

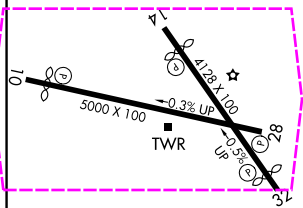
▼
NA Rwy 32 helicopter visibility reduction below $\frac{3}{4}$ SM NA.
Straight-in Rwy 32 NA at night, Circling Rwy 10, NA at night.

MISSED APPROACH: Climb to 1400 then climbing right turn to 2500 direct SSF VOR and hold.

ATIS 128.8	SAN ANTONIO APP CON 125.7 290.225	STINSON TOWER* 118.2 (CTAF) 379.9	GND CON 121.7 379.9	CLNC DEL 121.7 (When twr closed)	UNICOM 122.95
----------------------	---	---	-------------------------------	---	-------------------------



ELEV 578	D	TDZE 571
----------	---	----------



REIL Rwy 10, 14, 28, and 32

MRL Rwy 10-28 and 14-32

FAF to MAP 4.6 NM

Knots	60	90	120	150	180
Min:Sec	4:36	3:04	2:18	1:50	1:32

CATEGORY	A	B	C	D
S-32	1020-1 449 (500-1)		1020-1 449 (500-1 3/8)	NA
CIRCLING	1040-1 462 (500-1)	1120-1 542 (600-1)	1260-2 682 (700-2)	NA

SAN ANTONIO, TEXAS

Amdt 4D 07AUG25

29°20'N-98°28'W

STINSON MUNI (SSF)
VOR RWY 32