

(TJANO1.TJANO) 24053

AL-372 (FAA)

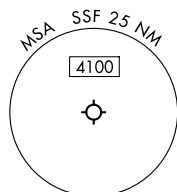
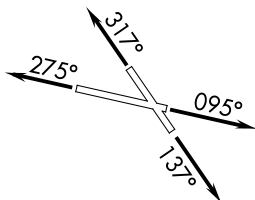
STINSON MUNI (SSF)  
SAN ANTONIO, TEXAS

## TJANO ONE DEPARTURE (RNAV)

SAN ANTONIO DEP CON  
125.7 290.225  
ATIS  
128.8  
CLNC DEL (When twr closed)  
121.7  
GND CON  
121.7 379.9  
STINSON TOWER\*  
118.2 379.9

RNAV 1 - DME/DME IRU or GPS.

RADAR required.

**TOP ALTITUDE:  
ASSIGNED BY ATC**LVACA  
5000NOTE: For non-GPS equipped aircraft,  
THX and SAT DME must be operational.

TJANO

TAKEOFF MINIMUMS

Rwy 9: Standard with minimum climb of 230'/NM to 1900.

Rwy 14: Standard with minimum climb of 220'/NM to 1900.

Rwy 27: 300-1% or standard with minimum climb of 230'/NM to 900, or alternatively, with standard takeoff minimums and a normal 200'/NM climb gradient, takeoff must occur no later than 1800' prior to DER.

Rwy 32: Standard with minimum climb of 230'/NM to 1700.

TEEPY



## DEPARTURE ROUTE DESCRIPTION

TAKEOFF RUNWAY 9: Climb on heading 095° or as assigned by ATC, for vectors to LVACA, thence. . .TAKEOFF RUNWAY 14: Climb on heading 137° or as assigned by ATC, for vectors to LVACA, thence. . .TAKEOFF RUNWAY 27: Climb on heading 275° or as assigned by ATC, for vectors to LVACA, thence. . .TAKEOFF RUNWAY 32: Climb on heading 317° or as assigned by ATC, for vectors to LVACA, thence. . .. . .on track 205° to TJANO, then on Transition.  
Maintain ATC assigned altitude.KAHAN TRANSITION (TJANO1.KAHAN)  
ZANNI TRANSITION (TJANO1.ZANNI)

ZANNI

KAHAN

Note: Chart not to scale.

TJANO ONE DEPARTURE (RNAV)

(TJANO1.TJANO) 25JAN24

SAN ANTONIO, TEXAS  
STINSON MUNI (SSF)SC-3, 10 JUL 2025 to 07 AUG 2025  
SC-3

(TJANO2.TJANO) 25219

AL-372 (FAA)

STINSON MUNI (SSF)  
SAN ANTONIO, TEXAS

## TJANO TWO DEPARTURE (RNAV)

SAN ANTONIO DEP CON  
125.7 290.225  
ATIS  
128.8  
CLNC DEL (When twr closed)  
121.7  
GND CON  
121.7 379.9  
STINSON TOWER ★  
118.2 379.9

RNAV 1 - DME/DME IRU or GPS.

RADAR required for non-GPS equipped aircraft.  
RADAR required.

**TOP ALTITUDE:  
ASSIGNED BY ATC**

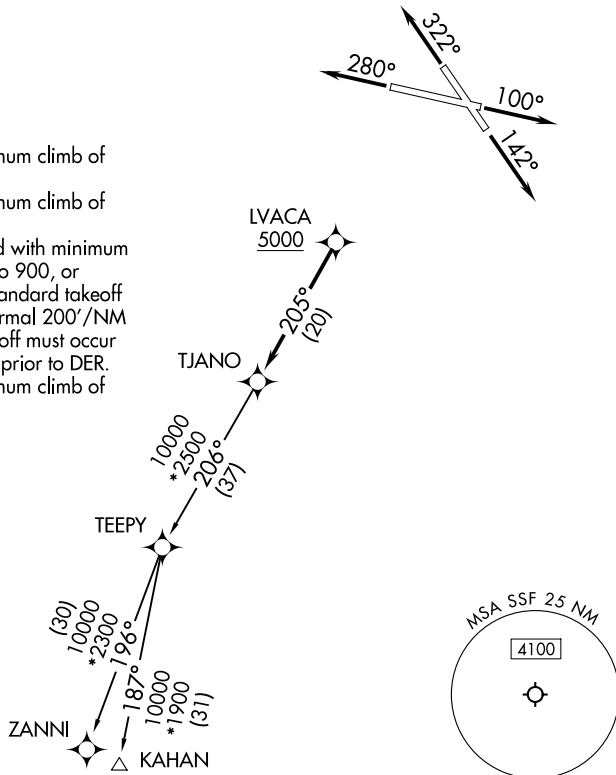
### TAKEOFF MINIMUMS

Rwy 10: Standard with minimum climb of  
230'/NM to 1900.

Rwy 14: Standard with minimum climb of  
220'/NM to 1900.

Rwy 28: 300-1 $\frac{5}{8}$  or standard with minimum  
climb of 230'/NM to 900, or  
alternatively, with standard takeoff  
minimums and a normal 200'/NM  
climb gradient, takeoff must occur  
no later than 1800' prior to DER.

Rwy 32: Standard with minimum climb of  
230'/NM to 1700.



### DEPARTURE ROUTE DESCRIPTION

TAKEOFF RUNWAY 10: Climb on heading 100° or as assigned by ATC, for vectors to LVACA, thence. . .

TAKEOFF RUNWAY 14: Climb on heading 142° or as assigned by ATC, for vectors to LVACA, thence. . .

TAKEOFF RUNWAY 28: Climb on heading 280° or as assigned by ATC, for vectors to LVACA, thence. . .

TAKEOFF RUNWAY 32: Climb on heading 322° or as assigned by ATC, for vectors to LVACA, thence. . .

. . . on track 205° to TJANO, then on transition. Maintain ATC assigned altitude.  
Expect filed altitude 10 minutes after departure.

KAHAN TRANSITION (TJANO2.KAHAN)

ZANNI TRANSITION (TJANO2.ZANNI)

TJANO TWO DEPARTURE (RNAV)

(TJANO2.TJANO) 07AUG25

SAN ANTONIO, TEXAS  
STINSON MUNI (SSF)

SC-3, 07 AUG 2025 to 04 SEP 2025

SC-3, 07 AUG 2025 to 04 SEP 2025