

SNIDR ONE DEPARTURE (RNAV)

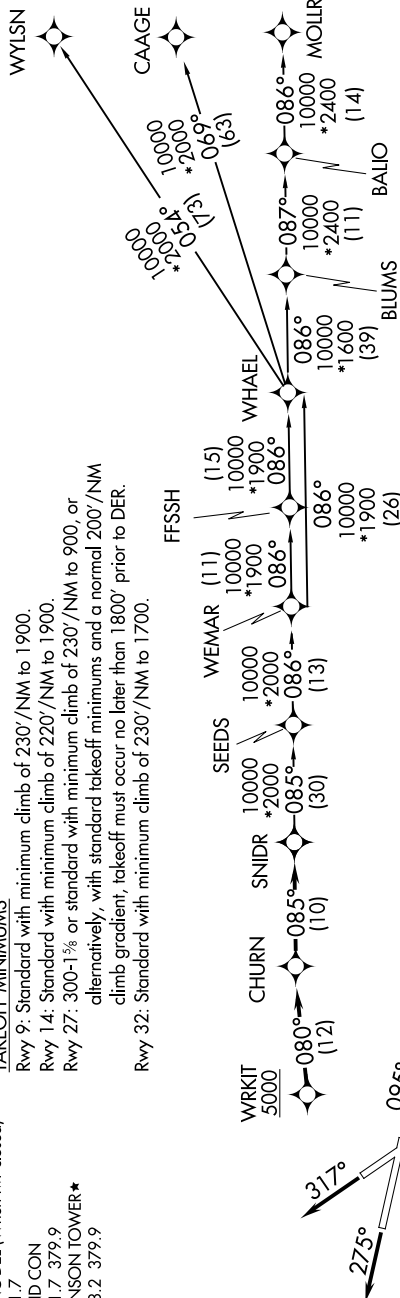
**TOP ALTITUDE:
ASSIGNED BY ATC**

RNAV 1 - DME/DME IRU or GPS.
RADAR required.

TAKEOFF MINIMUMS

Rwy 9: Standard with minimum climb of 230°/NM to 1900.
 Rwy 14: Standard with minimum climb of 220°/NM to 1900.
 Rwy 27: 300-1% or standard with minimum climb of 230°/NM to 900, or alternatively, with standard takeoff minimums and a normal 200°/NM climb gradient; takeoff must occur no later than 1800' prior to DER.
 Rwy 32: Standard with minimum climb of 230°/NM to 1700.

SAN ANTONIO DEP CON
125.7 290.225
ATIS
28.8
CLINIC DEL (When twr closed)
121.7
GND CON
121.7 379.9
STINSON TOWER★
118.2 379.9



DEPARTURE ROUTE DESCRIPTION

TAKEOFF RUNWAY 9: Climb on heading 095° or as assigned by ATC, for vectors to WRKIT, thence. . .
 TAKEOFF RUNWAY 14: Climb on heading 137° or as assigned by ATC, for vectors to WRKIT, thence. . .
 TAKEOFF RUNWAY 27: Climb on heading 275° or as assigned by ATC, for vectors to WRKIT, thence. . .
 TAKEOFF RUNWAY 32: Climb on heading 317° or as assigned by ATC, for vectors to WRKIT, thence. . .
 . . . on track 080° to CHURN, then on track 085° to SNIDR, then on transition. Maintain ATC assigned altitude.

BLUMS TRANSITION (SNIDR1.BLUMS)
CAGAE TRANSITION (SNIDR1.CAAGE)
FFSSH TRANSITION (SNIDR1.FFSSH)
MOLLR TRANSITION (SNIDR1.MOLLR)
SEEDS TRANSITION (SNIDR1.SEEDS)
WEWAM TRANSITION (SNIDR1.WEWAM)
WYHAE TRANSITION (SNIDR1.WHAEI)
WYLSN TRANSITION (SNIDR1.WYLSN)

Note: Chart not to scale.

SNIDR ONE DEPARTURE (RNAV)
(SNIDR1.SNIDR) 25JAN24

SAN ANTONIO, TEXAS
STINSON MUNI (SSF)

SC-3, 07 AUG 2025 to 04 SEP 2025

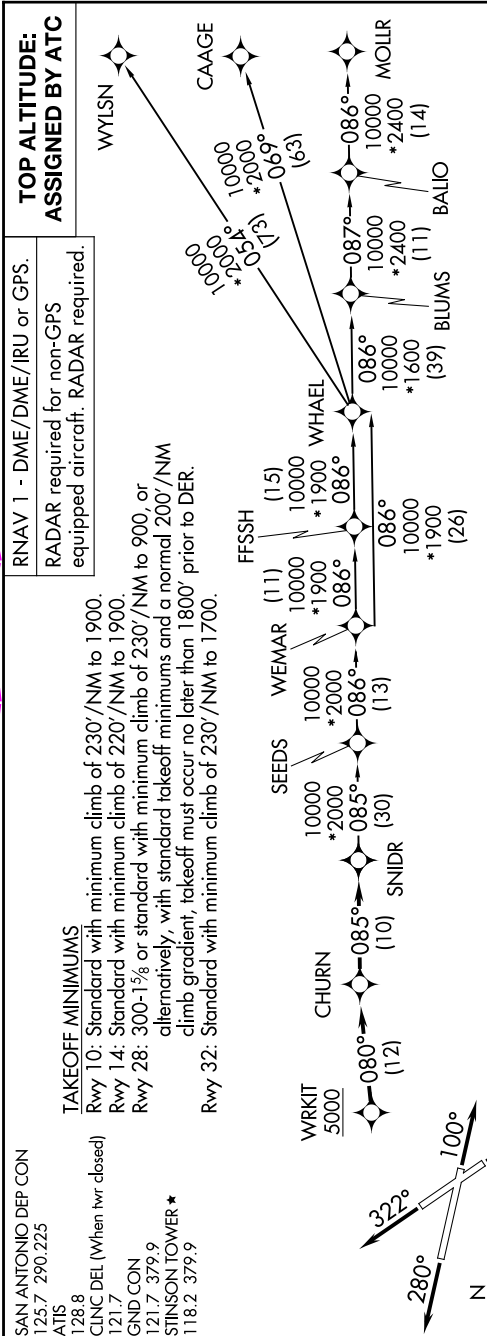
SAN ANTONIO DEP CON
125.7 290 225
ATIS
128.8
CLNC DEL (When twr closed)
121.7
GND CON
121.7 379.9
STINSON TOWER *
118.2 379.9

SNIDR TWO DEPARTURE (RNAV)
(SNIDR2.SNIDR) 07AUG25

(SNIDR2.SNIDR) 25219

AL-372 (FAA)

STINSON MUNI (SSF)
SAN ANTONIO, TEXAS



DEPARTURE ROUTE DESCRIPTION

TAKEOFF RUNWAY 10: Climb on heading 100° or as assigned by ATC, for vectors to WRKIT, thence. . .
TAKEOFF RUNWAY 14: Climb on heading 142° or as assigned by ATC, for vectors to WRKIT, thence. . .
TAKEOFF RUNWAY 28: Climb on heading 280° or as assigned by ATC, for vectors to WRKIT, thence. . .
TAKEOFF RUNWAY 32: Climb on heading 322° or as assigned by ATC, for vectors to WRKIT, thence. . .
... on track 080° to CHURN, then on track 085° to SNIDR. Expect filed altitude 10 minutes after departure.

- BLUMS TRANSITION (SNIDR2.BLUMS)
- CAAGE TRANSITION (SNIDR2.CAAGE)
- FFSSH TRANSITION (SNIDR2.FFSSH)
- MOLLR TRANSITION (SNIDR2.MOLLR)
- SEEDS TRANSITION (SNIDR2.SEEDS)
- WEMAR TRANSITION (SNIDR2.WEMAR)
- WHAEL TRANSITION (SNIDR2.WHAEL)
- WYLSN TRANSITION (SNIDR2.WYLSN)

NOTE: Chart not to scale.

SC-3, 07 AUG 2025 to 04 SEP 2025

SAN ANTONIO, TEXAS
STINSON MUNI (SSF)