

(BOWIE7.BOWIE) 24137

AL-372 (FAA)

STINSON MUNI (SSF)

SAN ANTONIO, TEXAS

## BOWIE SEVEN DEPARTURE

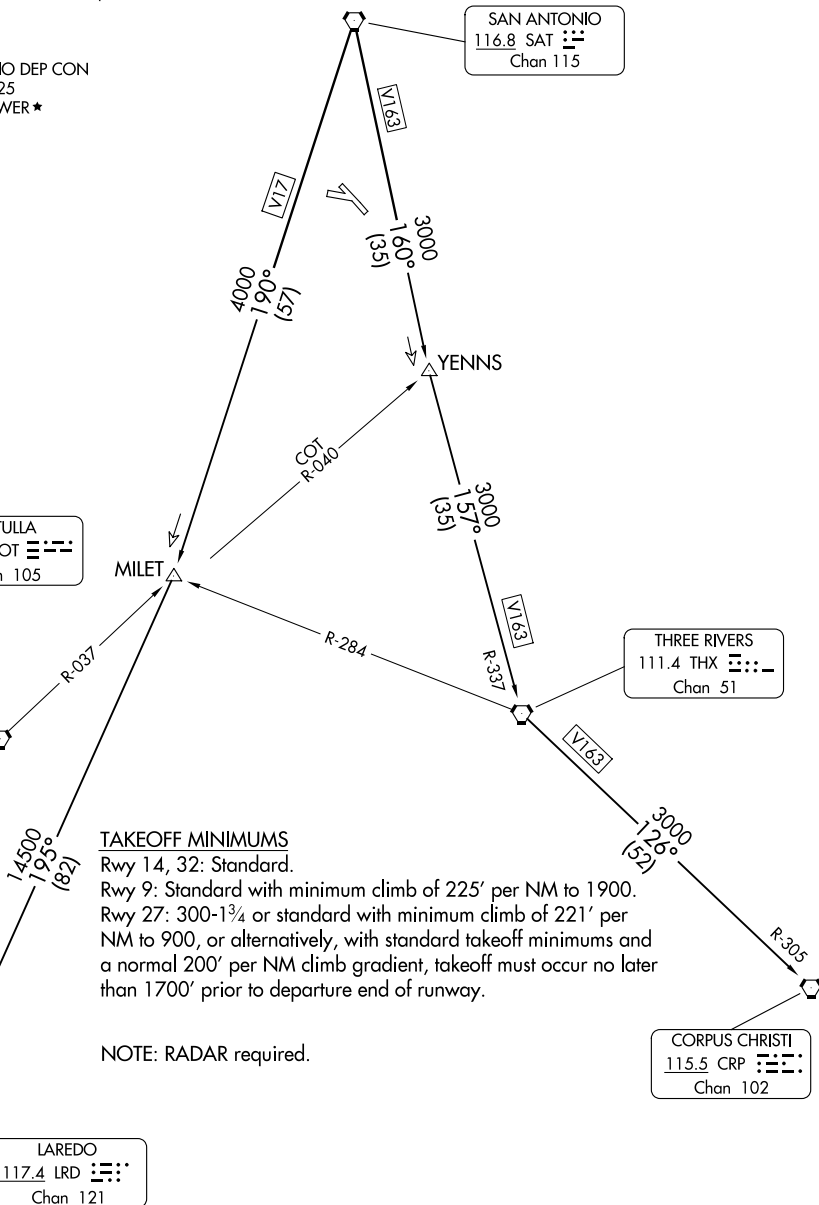
ATIS  
128.8  
CLNC DEL (When twr closed)  
121.7  
GND CON  
121.7 379.9  
SAN ANTONIO DEP CON  
125.7 290.225  
STINSON TOWER ★  
118.2 379.9

SAN ANTONIO  
116.8 SAT  
Chan 115

COTULLA  
115.8 COT  
Chan 105

THREE RIVERS  
111.4 THX  
Chan 51

CORPUS CHRISTI  
115.5 CRP  
Chan 102



NOTE: Chart not to scale

(CONTINUED ON FOLLOWING PAGE)

## BOWIE SEVEN DEPARTURE

(BOWIE7.BOWIE) 02MAR17

SAN ANTONIO, TEXAS

STINSON MUNI (SSF)

SC-3, 10 JUL 2025 to 07 AUG 2025

SC-3

(BOWIE8.BOWIE) 25219

AL-372 (FAA)

STINSON MUNI (SSF)

SAN ANTONIO, TEXAS

## BOWIE EIGHT DEPARTURE

SAN ANTONIO DEP CON

125.7 290.225

ATIS

128.8

CLNC DEL (When twr closed)

121.7

GND CON

121.7 379.9

STINSON TOWER\*

118.2 (CTAF) 379.9

RADAR required.  
DME required.SAN ANTONIO  
116.8 SAT  
Chan 115STINSON  
108.4 SSF

MSA SSF 25 NM

3100

SOMER

YENNS

MILET

SLENA

COTULLA  
115.8 COT  
Chan 105

ALICE

114.5 ALI

CORPUS CHRISTI  
115.5 CRP  
Chan 102

LAREDO

117.4 LRD  
Chan 121

## TAKEOFF MINIMUMS

Rwy 10: Standard with minimum climb of 230'/NM to 1900.

Rwy 14: Standard with minimum climb of 220'/NM to 1900.

Rwy 28: 300-1½ or standard with minimum climb of 230'/NM to 900, or alternatively, with standard takeoff minimums and a normal 200'/NM climb gradient, takeoff must occur no later than 1800' prior to DER.

Rwy 32: Standard with minimum climb of 230'/NM to 1700.

NOTE: Chart not to scale.

(CONTINUED ON FOLLOWING PAGE)

## BOWIE EIGHT DEPARTURE

(BOWIE8.BOWIE) 07AUG25

SAN ANTONIO, TEXAS

STINSON MUNI (SSF)

SC-3, 07 AUG 2025 to 04 SEP 2025

SC-3, 07 AUG 2025 to 04 SEP 2025