

(ALAMO4.ALAMO) 24305

AL-372 (FAA)

STINSON MUNI (SSF')

SAN ANTONIO, TEXAS

## ALAMO FOUR DEPARTURE

RADAR required.

**TOP ALTITUDE:  
ASSIGNED BY ATC**

SAN ANTONIO DEP CON

125.7 290.225

ATIS

128.8

CLNC DEL (When twr closed)

121.7

GND CON

121.7 379.9

STINSON TOWER ★

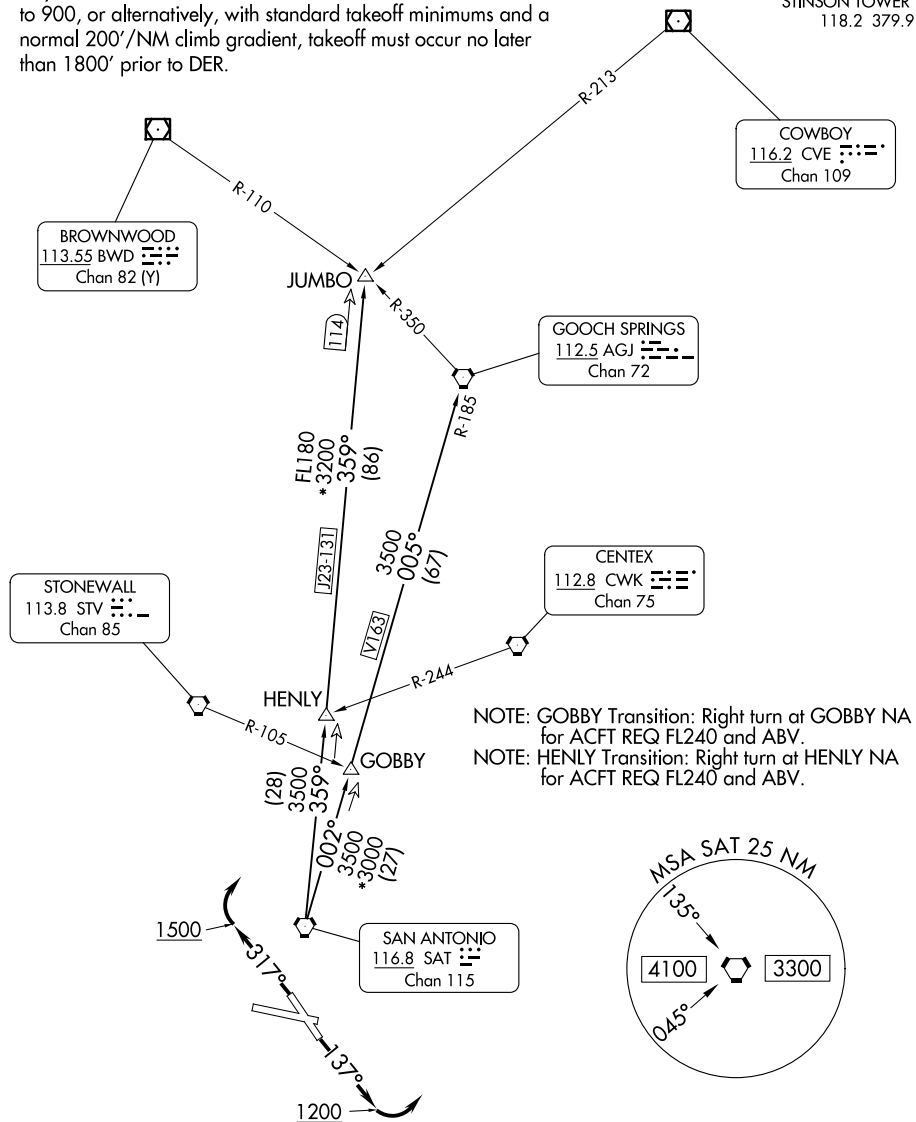
118.2 379.9

TAKEOFF MINIMUMS

Rwy 14, 32: Standard.

Rwy 9: Standard with minimum climb of 230'/NM to 1900.

Rwy 27: 300-1% or standard with minimum climb of 225'/NM to 900, or alternatively, with standard takeoff minimums and a normal 200'/NM climb gradient, takeoff must occur no later than 1800' prior to DER.



(CONTINUED ON FOLLOWING PAGE)

NOTE: Chart not to scale

## ALAMO FOUR DEPARTURE

(ALAMO4.ALAMO) 31 OCT 24

SAN ANTONIO, TEXAS

STINSON MUNI (SSF')

SC-3, 10 JUL 2025 to 07 AUG 2025

SC-3, 10 JUL 2025 to 07 AUG 2025

(ALAMO5.ALAMO) 25219

AL-372 (FAA)

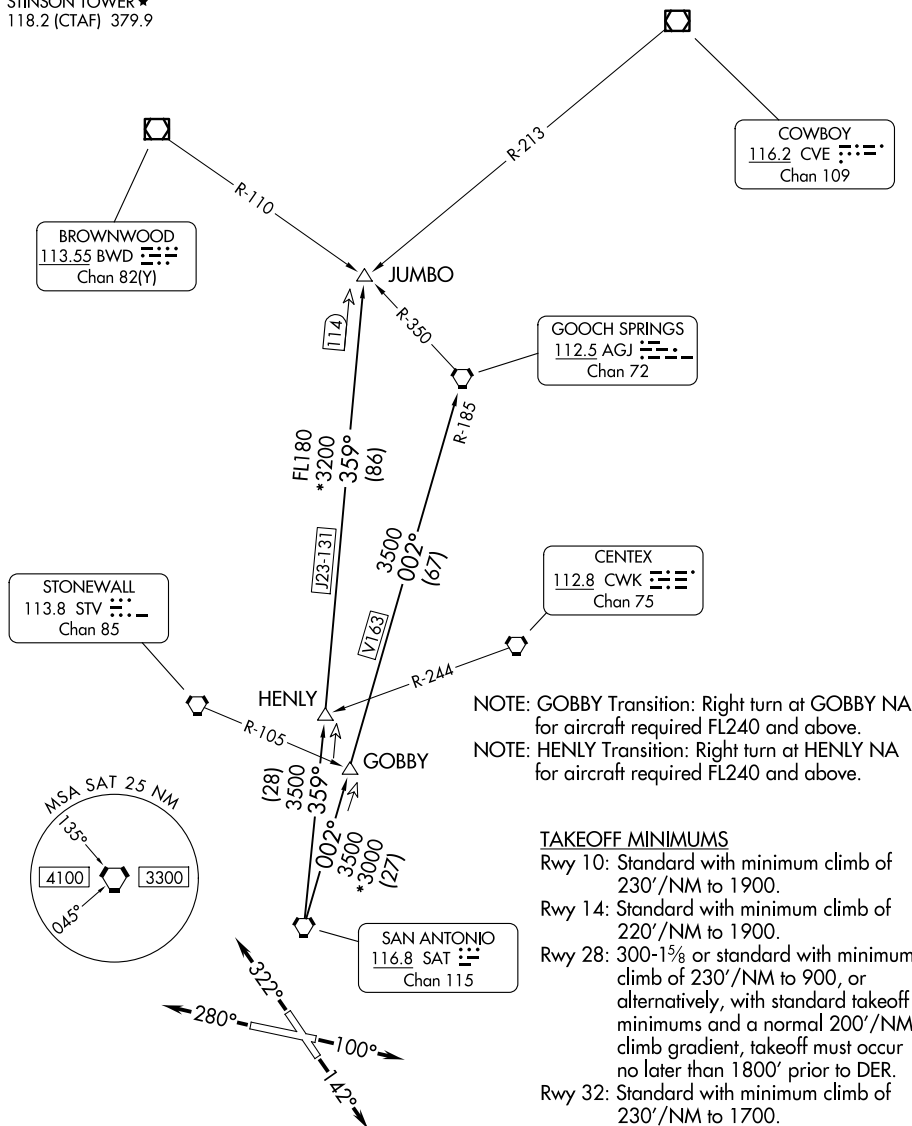
STINSON MUNI (SSF)  
SAN ANTONIO, TEXAS

## ALAMO FIVE DEPARTURE

SAN ANTONIO DEP CON  
125.7 290.225  
ATIS  
128.8  
CLNC DEL (When twr closed)  
121.7  
GND CON  
121.7 379.9  
STINSON TOWER ★  
118.2 (CTAF) 379.9

RADAR required.

**TOP ALTITUDE:  
ASSIGNED BY ATC**



NOTE: Chart not to scale.

(CONTINUED ON FOLLOWING PAGE)

## ALAMO FIVE DEPARTURE

(ALAMO5.ALAMO) 07AUG25

SAN ANTONIO, TEXAS  
STINSON MUNI (SSF)

SC-3, 07 AUG 2025 to 04 SEP 2025