

YODUH1.YODUH)

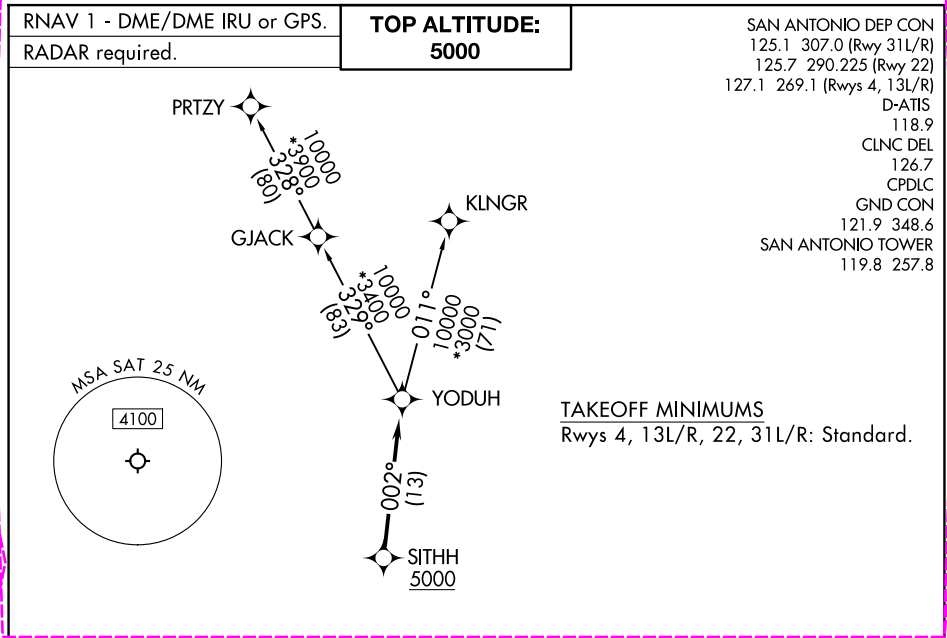
24081

AL-369 (FAA)

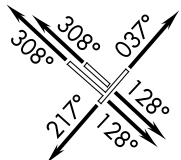
SAN ANTONIO INTL (SAT)

YODUH ONE DEPARTURE (RNAV)

SAN ANTONIO, TEXAS



NOTE: Aircraft destined for airports north/northeast of DFW terminal area must file the KLNGR Transition.



NOTE: Chart not to scale.



DEPARTURE ROUTE DESCRIPTION

- TAKEOFF RUNWAY 4: Climb on heading 037° or as assigned by ATC, for vectors to SITHH, thence . . .
- TAKEOFF RUNWAYS 13L/R: Climb on heading 128° or as assigned by ATC, for vectors to SITHH, thence . . .
- TAKEOFF RUNWAY 22: Climb on heading 217° or as assigned by ATC, for vectors to SITHH, thence . . .
- TAKEOFF RUNWAYS 31L/R: Climb on heading 308° or as assigned by ATC, for vectors to SITHH, thence . . .

. . . on track 002° to YODUH, then on Transition. Maintain 5000.

KLNGR TRANSITION (YODUH1.KLNGR)
PRTZY TRANSITION (YODUH1.PRTZY)

(YODUH2.YODUH) 25219

AL-369 (FAA)

SAN ANTONIO INTL (SAT)

YODUH TWO DEPARTURE (RNAV)

SAN ANTONIO, TEXAS

SAN ANTONIO DEP CON

125.1 307.0 (31L/R)

125.7 290.225 (22)

127.1 269.1 (4, 13L/R)

D-ATIS

118.9

CLNC DEL

126.7

CPDLC

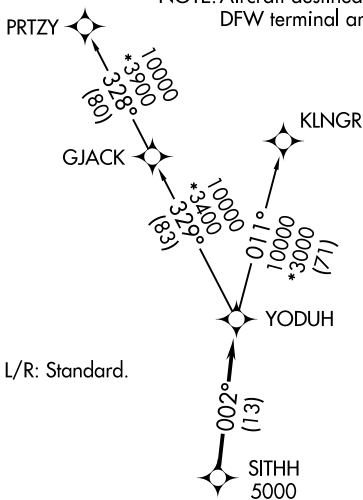
GND CON

121.9 348.6

SAN ANTONIO TOWER

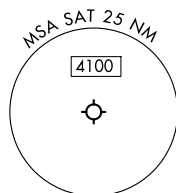
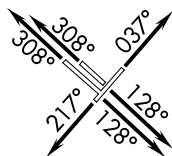
119.8 257.8

RNAV 1 - DME/DME IRU or GPS.

RADAR required for non-GPS
equipped aircraft. RADAR required.**TOP ALTITUDE:
5000**NOTE: Aircraft destined for airports north/northeast of
DFW terminal area must file the KLNGR Transition.

TAKEOFF MINIMUMS

Rwys 4, 13L/R, 22, 31L/R: Standard.



NOTE: Chart not to scale.

DEPARTURE ROUTE DESCRIPTION

TAKEOFF RUNWAY 4: Climb on heading 037° or as assigned by ATC, for vectors to SITHH, thence. . .**TAKEOFF RUNWAYS 13L/R:** Climb on heading 128° or as assigned by ATC, for vectors to SITHH, thence. . .**TAKEOFF RUNWAY 22:** Climb on heading 217° or as assigned by ATC, for vectors to SITHH, thence. . .**TAKEOFF RUNWAYS 31L/R:** Climb on heading 308° or as assigned by ATC, for vectors to SITHH, thence. . .

. . . on track 002° to YODUH, then on transition. Maintain 5000. Expect filed altitude 10 minutes after departure.

KLNGR TRANSITION (YODUH2.KLNGR)
PRTZY TRANSITION (YODUH2.PRTZY)

YODUH TWO DEPARTURE (RNAV)

(YODUH2.YODUH) 07AUG25

SAN ANTONIO, TEXAS
SAN ANTONIO INTL (SAT)

SC-3, 07 AUG 2025 to 04 SEP 2025

SC-3, 07 AUG 2025 to 04 SEP 2025