

(TJANO1.TJANO) 24081

AL-369 (FAA)

SAN ANTONIO INTL (SAT)

TJANO ONE DEPARTURE (RNAV)

SAN ANTONIO, TEXAS

SAN ANTONIO DEP CON

125.7 290.225 (Rwys 13L/R, 22, 31L/R)

127.1 269.1 (Rwy 4)

D-ATIS

118.9

CLNC DEL

126.7

CPDLC

GND CON

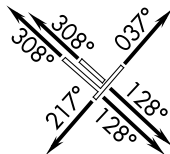
121.9 348.6

SAN ANTONIO TOWER

119.8 257.8

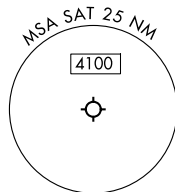
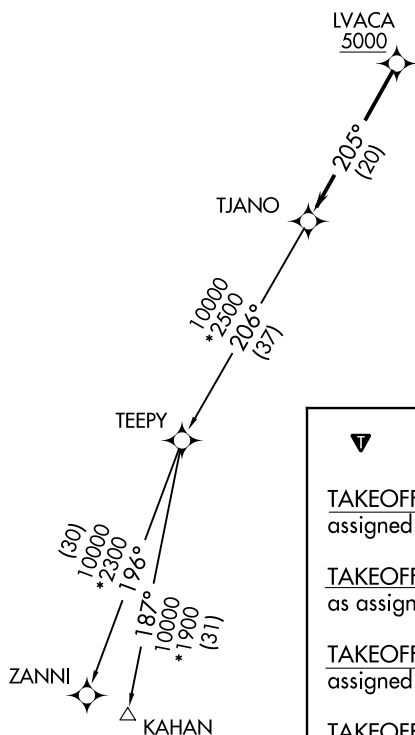
RNAV 1 - DME/DME IRU or GPS.

RADAR required.

TOP ALTITUDE:
5000

TAKEOFF MINIMUMS

Rwys 4, 13L/R, 22, 31L/R: Standard.

NOTE: For non-GPS equipped aircraft,
THX and SAT DME must be operational.

DEPARTURE ROUTE DESCRIPTION

TAKEOFF RUNWAY 4: Climb on heading 037° or as assigned by ATC, for vectors to LVACA, thence. . .

TAKEOFF RUNWAY 13L/R: Climb on heading 128° or as assigned by ATC, for vectors to LVACA, thence. . .

TAKEOFF RUNWAY 22: Climb on heading 217° or as assigned by ATC, for vectors to LVACA, thence. . .

TAKEOFF RUNWAY 31L/R: Climb on heading 308° or as assigned by ATC, for vectors to LVACA, thence. . .

...on track 205° to TJANO, then on Transition. Maintain 5000.

KAHAN TRANSITION (TJANO1.KAHAN)ZANNI TRANSITION (TJANO1.ZANNI)

Note: Chart not to scale.

TJANO ONE DEPARTURE (RNAV)

(TJANO1.TJANO) 25JAN24

SAN ANTONIO, TEXAS

SAN ANTONIO INTL (SAT)

SC-3, 10 JUL 2025 to 07 AUG 2025

SC-3

(TJANO2.TJANO) 25219

AL-369 (FAA)

SAN ANTONIO INTL (SAT)

TJANO TWO DEPARTURE (RNAV)

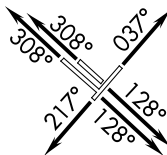
SAN ANTONIO, TEXAS

SAN ANTONIO DEP CON
125.7 290.225 (13L/R, 22, 31L/R)
127.1 269.1 (4)
D-ATIS
118.9
CLNC DEL
126.7
CPDLC
GND CON
121.9 348.6
SAN ANTONIO TOWER
119.8 257.8

RNAV 1 - DME/DME IRU or GPS.

RADAR required for non-GPS
equipped aircraft. RADAR required.

TOP ALTITUDE:
5000

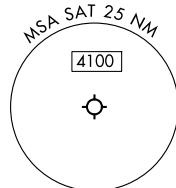
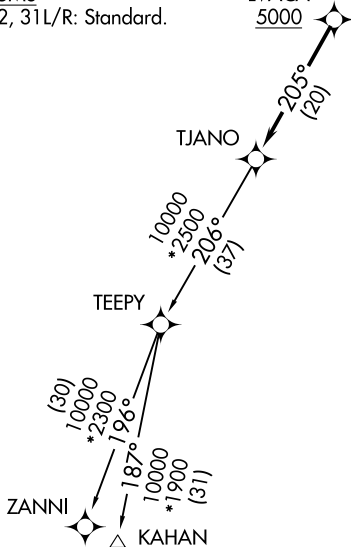


TAKEOFF MINIMUMS

Rwys 4, 13L/R, 22, 31L/R: Standard.

LVACA

5000



NOTE: Chart not to scale.



DEPARTURE ROUTE DESCRIPTION

TAKEOFF RUNWAY 4: Climb on heading 037° or as assigned by ATC, for vectors to LVACA, thence. . .

TAKEOFF RUNWAYS 13L/R: Climb on heading 128° or as assigned by ATC, for vectors to LVACA, thence. . .

TAKEOFF RUNWAY 22: Climb on heading 217° or as assigned by ATC, for vectors to LVACA, thence. . .

TAKEOFF RUNWAYS 31L/R: Climb on heading 308° or as assigned by ATC, for vectors to LVACA, thence. . .

. . .on track 205° to TJANO, then on transition. Maintain 5000. Expect filed altitude 10 minutes after departure.

KAHAN TRANSITION (TJANO2.KAHAN)

ZANNI TRANSITION (TJANO2.ZANNI)

TJANO TWO DEPARTURE (RNAV)

(TJANO2.TJANO) 07AUG25

SAN ANTONIO, TEXAS

SAN ANTONIO INTL (SAT)

SC-3, 07 AUG 2025 to 04 SEP 2025

SC-3