

SAN ANTONIO, TEXAS

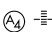
AL-369 (FAA)

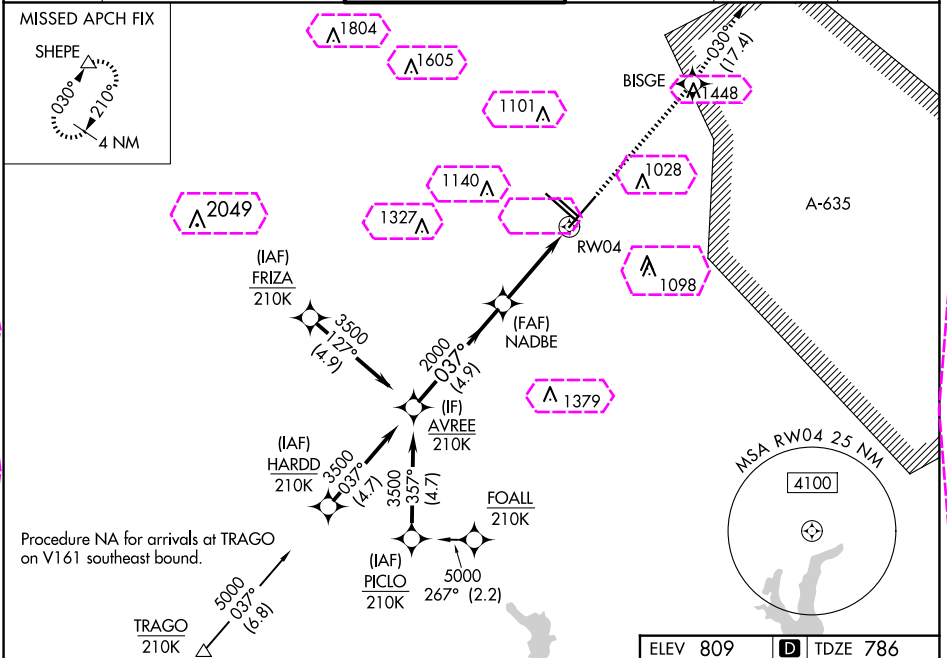
25163

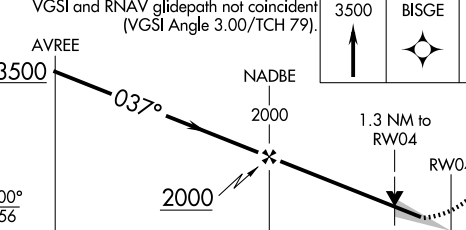
WAAS CH 77613 W04A	APP CRS 037°	Rwy Ldg TDZE 786 Apt Elev 809
--	------------------------	---

RNAV (GPS) Y RWY 4

SAN ANTONIO INTL (SAT)

RNP APCH - GPS.			MALSS 	MISSED APPROACH: Climb to 3500 direct BISGE and track 030° to SHEPE and hold.	
▼ Circling NA northwest of Rwy 4 and 13R. Inop table does not apply to LPV. For uncompensated Baro-VNAV systems, LNAV/VNAV NA below -5°C or above 54°C. For inop ALS, increase LNAV/VNAV all Cats visibility to RVR 6000. Increase LNAV Cats A/B visibility to RVR 5500 and LNAV Cats C/D visibility to 1½ SM.					
D-ATIS 118.9	SAN ANTONIO APP CON 125.1 307.0	SAN ANTONIO TOWER 119.8 257.8	GND CON 121.9 348.6	CLNC DEL 126.7	CPDLC



VGSI and RNAV glidepath not coincident (VGSI Angle 3.00/TCH 79).		3500	BISGE	tr 030°	SHEPE
					
GP 3.00° TCH 56					
CATEGORY	A	B	C	D	
LPV DA	986/40		200 (200-¾)		
LNAV/VNAV DA	1201/50		415 (400-1)		
LNAV MDA	1280/40	494 (500-¾)	1280/60	494 (500-1¼)	
CIRCLING	1280-1 471 (500-1)	1340-1 531 (600-1)	1420-1¾ 611 (700-1¾)	1520-2¼ 711 (800-2¼)	

TDZ/CL Rwy 13R
REIL Rwy 13L, 22 and 31R
HIRL Rwy 4-22 and 13R-31L
MIRL Rwy 13L-31R

SC-3, 10 JUL 2025 to 07 AUG 2025

SC-3, 10 JUL 2025 to 07 AUG 2025

SAN ANTONIO, TEXAS
Amdt 4A 20FEB25

29°32'N-98°28'W

RNAV (GPS) Y RWY 4

WAAS CH 77613 W04A	APP CRS 037°	Rwy Ldg TDZE Apt Elev	8505 786 809
--	------------------------	-----------------------------	---

RNAV (GPS) Y RWY 4
SAN ANTONIO INTL (SAT)

RNP APCH - GPS.

T Circling NA northwest of Rwy 4 and 13R. Inop table does not apply to LPV. For uncompensated Baro-VNAV systems, LNAV/VNAV NA below -5°C or above 54°C.

A For inop ALS, increase LNAV/VNAV all Cts visibility to RVR 6000. Increase LNAV Cts A/B visibility to RVR 5500 and LNAV Cts C/D visibility to 1% SM.

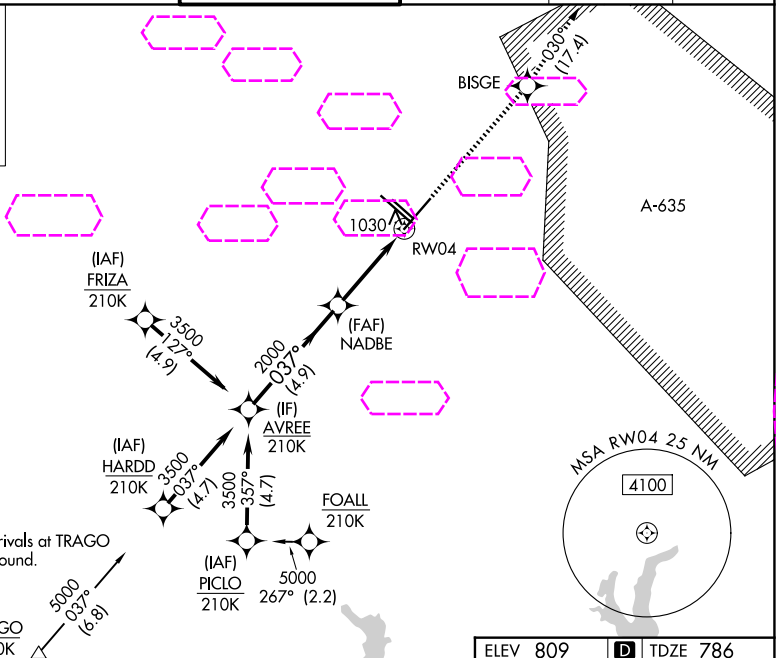
MALS



MISSED APPROACH: Climb to 3500 direct BISGE and track 030° to SHEPE and hold.

D-ATIS 118.9	SAN ANTONIO APP CON 125.1 307.0	SAN ANTONIO TOWER 119.8 257.8	GND CON 121.9 348.6	CLNC DEL 126.7	CPDLC
------------------------	---	---	-------------------------------	--------------------------	-------

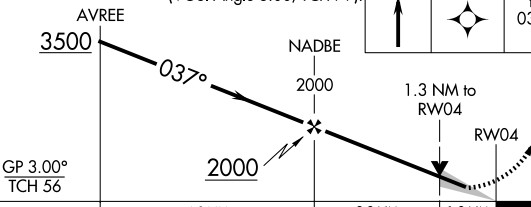
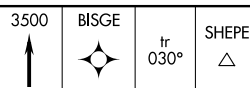
MISSED APCH FIX



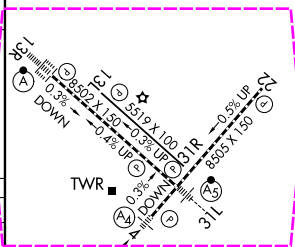
Procedure NA for arrivals at TRAGO on V161 southeast bound



VGSI and RNAV glidepath not coincident
(VGSI Angle 3.00/TCH 79).



CATEGORY	A	B	C	D
LPV DA	986/40 200 (200-¾)			
INAV/ VNAV DA	1201/50 415 (400-1)			
INAV MDA	1280/40 494 (500-¾)		1280/60 494 (500-1¼)	
CIRCLING	1280-1 471 (500-1)	1340-1 531 (600-1)	1420-1¾ 611 (700-1¾)	1520-2¼ 711 (800-2¼)



TDZ/CL Rwy 13R
REIL Rwy 13L, 22 and 31R
HIRL Rwy 4-22 and 13R-31L
MIRL Rwy 13L-31R

SC-3, 07 AUG 2025 to 04 SEP 2025

SC-3, 07 AUG 2025 to 04 SEP 2025