

SAN ANTONIO, TEXAS

AL-369 (FAA)

25163

WAAS CH 61209 W31A	APP CRS 308°	Rwy Ldg 8502 TDZE 790 Apt Elev 809
--	------------------------	---

RNAV (GPS) Y RWY 31L

SAN ANTONIO INTL (SAT)

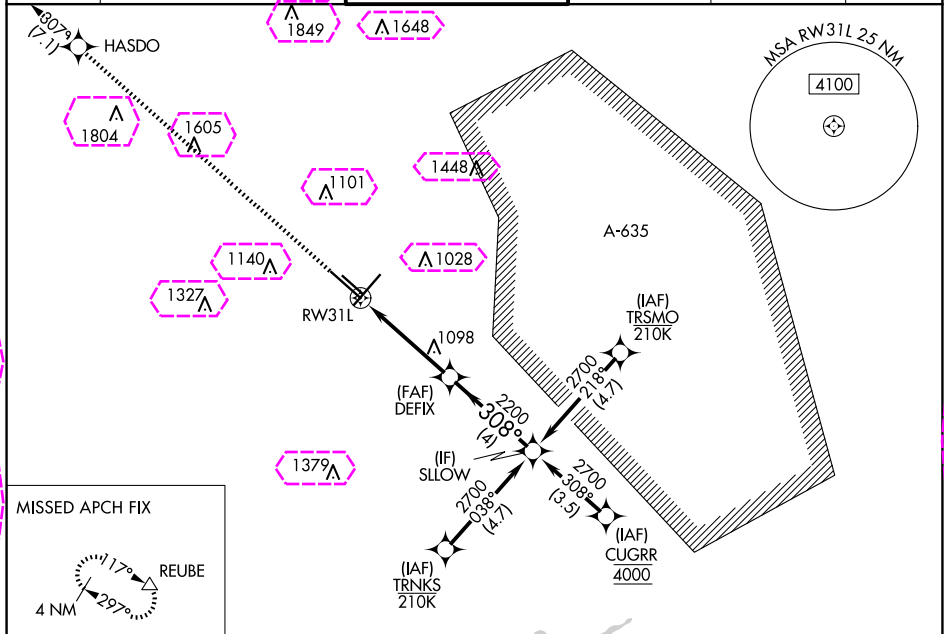
RNP APCH - GPS.

For uncompensated Baro-VNAV systems, LNAV/VNAV NA below -5°C or above 54°C. Circling NA northwest of Rwys 4 and 13R.
* RVR 1800 authorized with use of FD or AP or HUD to DA.

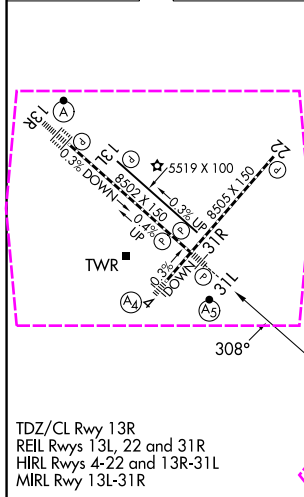


MISSED APPROACH: Climb to 4200 direct HASDO and track 307° to REUBE and hold.

D-ATIS 118.9	SAN ANTONIO APP CON 125.1 307.0	SAN ANTONIO TOWER 119.8 257.8	GND CON 121.9 348.6	CLNC DEL 126.7	CPDLC
------------------------	---	---	-------------------------------	--------------------------	-------



ELEV 809	TDZE 790
----------	----------



4200	HASDO	REUBE	VGSI and RNAV glidepath not coincident (VGSI Angle 3.00/TCH 82).	
↑	ir 307°	△	SLOW	
RW31L		1.5 NM to RW31L	DEFIX 2200	2700
			308°	
			2200	
			GP 3.00°	TCH 60
			1.5 NM	2.8 NM
CATEGORY	A	B	C	D
LPV DA *	990/24		200 (200-½)	
LNAV/VNAV DA	1220/40		430 (500-¾)	
LNAV MDA	1360/24	570 (600-½)	1360/60	570 (600-¼)
CIRCLING	1360-1	551 (600-1)	1420-1¾ 611 (700-¾)	1520-2¼ 711 (800-2¼)

SAN ANTONIO, TEXAS
Amdt 2 25JAN24

29°32'N-98°28'W

SAN ANTONIO INTL (SAT)
RNAV (GPS) Y RWY 31L

SC-3, 10 JUL 2025 to 07 AUG 2025

SC-3, 10 JUL 2025 to 07 AUG 2025

SAN ANTONIO, TEXAS

AL-369 (FAA)

25219

WAAS CH 61209 W31A	APP CRS 308°	Rwy Ldg 8502 TDZE 790 Apt Elev 809
--	------------------------	---

RNAV (GPS) Y RWY 31L

SAN ANTONIO INTL (SAT)

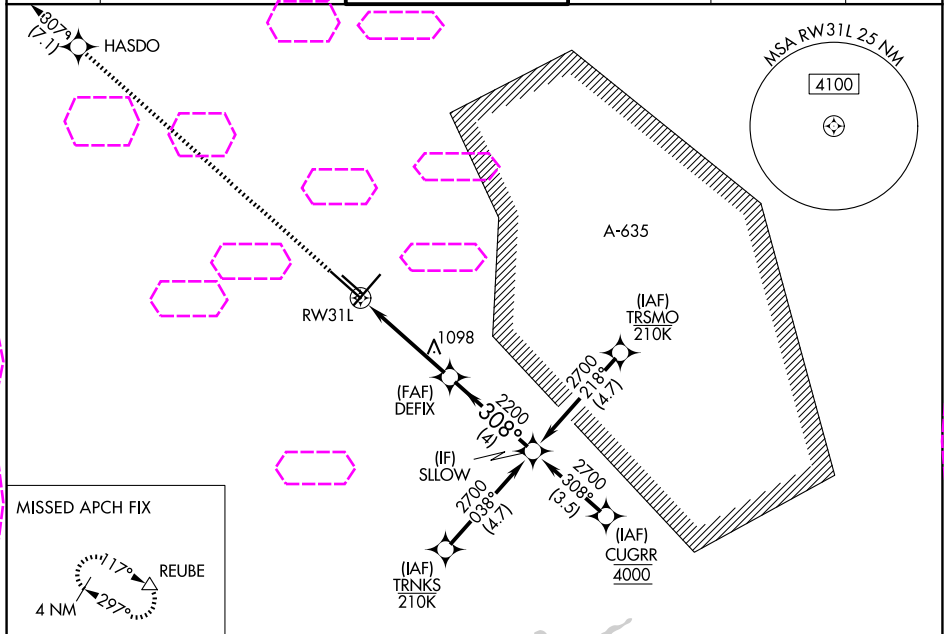
RNP APCH - GPS.

▼ For uncompensated Baro-VNAV systems, LNAV/VNAV NA below -5°C or above 54°C. Circling NA northwest of Rwy 4 and 13R.
▲ * RVR 1800 authorized with use of FD or AP or HUD to DA.

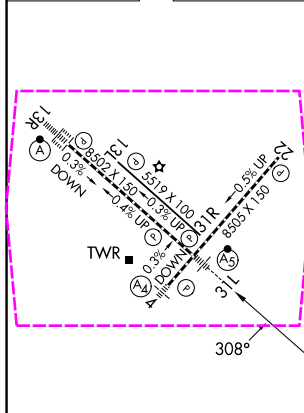


MISSED APPROACH: Climb to 4200 direct HASDO and track 307° to REUBE and hold.

D-ATIS 118.9	SAN ANTONIO APP CON 125.1 307.0	SAN ANTONIO TOWER 119.8 257.8	GND CON 121.9 348.6	CLNC DEL 126.7	CPDLC
------------------------	---	---	-------------------------------	--------------------------	-------



ELEV 809	D	TDZE 790
----------	----------	----------



4200	HASDO	REUBE	VGSI and RNAV glidepath not coincident (VGSI Angle 3.00/TCH 82).	
↑	✧	△	SLOW	
1.5 NM to RW31L		DEFIX 2200	308°	2700
RW31L		2200	308°	2700
1.5 NM		2.8 NM	4 NM	GP 3.00° TCH 60
CATEGORY	A	B	C	D
LPV DA *	990/24		200 (200-½)	
LNAV/VNAV DA	1220/40		430 (500-¾)	
LNAV MDA	1360/24	570 (600-½)	1360/60	570 (600-¼)
CIRCLING	1360-1	551 (600-1)	1420-1¾ 611 (700-¾)	1520-2¼ 711 (800-2¼)

TDZ/CL Rwy 13R
REIL Rwy 13L, 22 and 31R
HIRL Rwy 4-22 and 13R-31L
MIRL Rwy 13L-31R

SAN ANTONIO, TEXAS
Amdt 2 25JAN24

29°32'N-98°28'W

SAN ANTONIO INTL (SAT)
RNAV (GPS) Y RWY 31L

SC-3, 07 AUG 2025 to 04 SEP 2025

SC-3, 07 AUG 2025 to 04 SEP 2025