

SAN ANTONIO, TEXAS

AL-369 (FAA)

25163

WAAS CH 69430 W22A	APP CRS 217°	Rwy Ldg 8505 TDZE 770 Apt Elev 809
--	------------------------	---

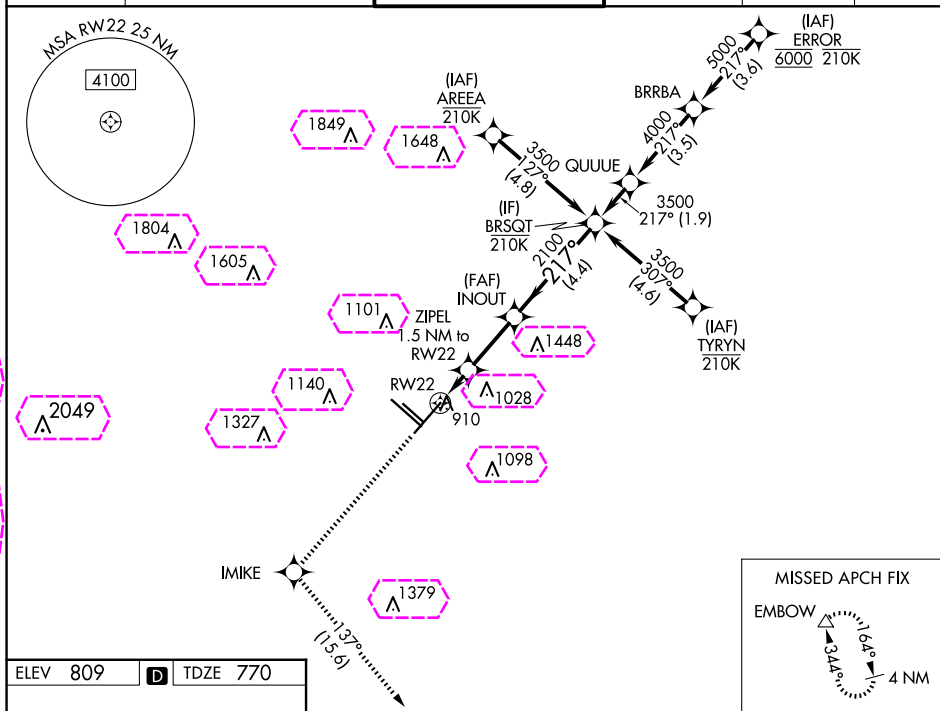
RNAV (GPS) Y RWY 22
SAN ANTONIO INTL (SAT)

RNP APCH - GPS.

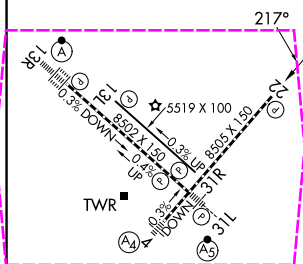
T Circling NA northwest of Rwy 4 and 13R. For uncompensated Baro-VNAV systems,
A LNAV/VNAV NA below -5°C or above 54°C.

MISSED APPROACH: Climb to 3100 direct IMIKE and on track 137° to EMBOW and hold.

D-ATIS 118.9	SAN ANTONIO APP CON 125.1 307.0	SAN ANTONIO TOWER 119.8 257.8	GND CON 121.9 348.6	CLNC DEL 126.7	CPDLC
------------------------	---	---	-------------------------------	--------------------------	-------



ELEV 809	D	TDZE 770
----------	----------	----------



TDZ/CL Rwy 13R
REIL Rwys 13L, 22 and 31R
HIRL Rwys 4-22 and 13R-31L
MIRL Rwy 13L-31R

The diagram illustrates the VGSB glidepath, which is a 3.00° glidepath (TCH 55) starting from a 1.5 NM distance from the runway (RW22) and extending to a distance of 4.4 NM from the runway. The glidepath is marked with a 217° angle and a 2100 ft altitude. The diagram also shows the VGSB and RNAV glidepath not coincident (VGSB Angle 3.00/TCH 85). The diagram includes a table with the following data:

CATEGORY	A	B	C	D
LPV DA	970- $\frac{3}{4}$	200 (200- $\frac{3}{4}$)		
LNAV/VNAV DA	1220- $\frac{1}{8}$	450 (500- $\frac{1}{8}$)		
LNAV MDA	1220-1	450 (500-1)	1220- $\frac{1}{8}$	450 (500- $\frac{1}{8}$)
CIRCLING	1280-1 471 (500-1)	1340-1 531 (600-1)	1420- $\frac{1}{4}$ 611 (700- $\frac{1}{4}$)	1520- $\frac{1}{2}$ 711 (800- $\frac{1}{2}$)

SAN ANTONIO, TEXAS
Amdt 3 25JAN24

29°32'N-98°28'W

SAN ANTONIO INTL (SAT)

RNAV (GPS) Y RWY 22

SAN ANTONIO, TEXAS

AL-369 (FAA)

25219

WAAS CH 69430 W22A	APP CRS 217°	Rwy Ldg 8505 TDZE 770 Apt Elev 809
--	------------------------	---

RNAV (GPS) Y RWY 22

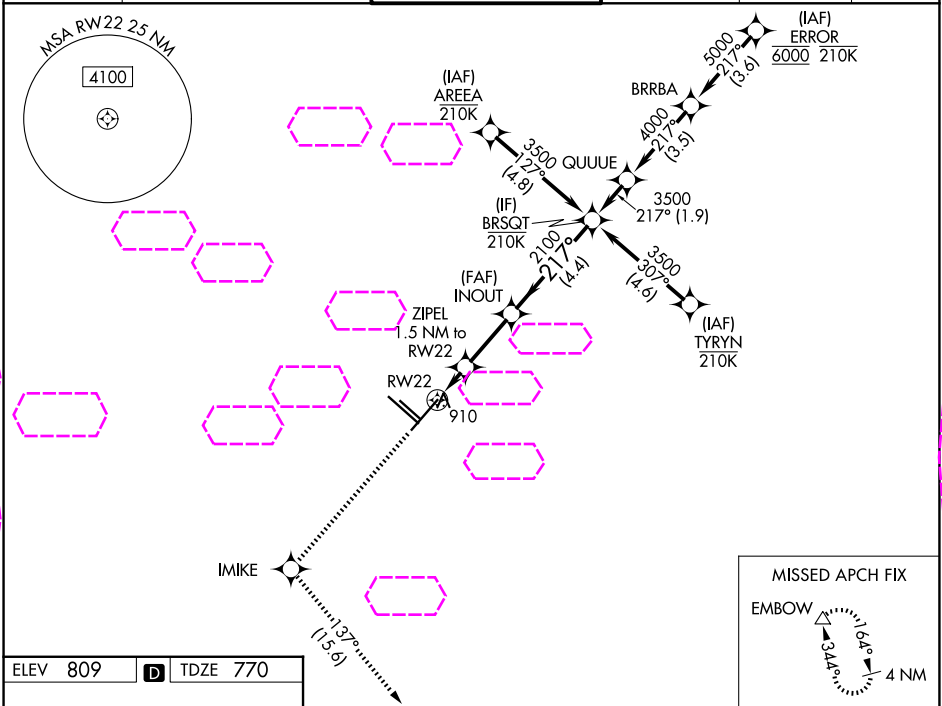
SAN ANTONIO INTL (SAT)

RNP APCH - GPS.

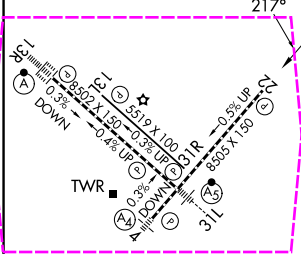
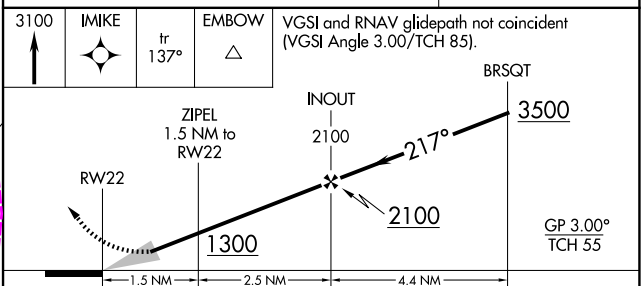
⚠ Circling NA northwest of Rwy 4 and 13R. For uncompensated Baro-VNAV systems, LNAV/VNAV NA below -5°C or above 54°C.

MISSED APPROACH: Climb to 3100 direct IMIKE and on track 137° to EMBOW and hold.

D-ATIS 118.9	SAN ANTONIO APP CON 125.1 307.0	SAN ANTONIO TOWER 119.8 257.8	GND CON 121.9 348.6	CLNC DEL 126.7	CPDLC
------------------------	---	---	-------------------------------	--------------------------	-------



ELEV 809	D	TDZE 770
----------	----------	----------



CATEGORY	A	B	C	D
LPV DA	970-3/4	200 (200-3/4)		
LNAV/VNAV DA	1220-1 3/8	450 (500-1 3/8)		
LNAV MDA	1220-1	450 (500-1)	1220-1 3/8	450 (500-1 3/8)
CIRCLING	1280-1 471 (500-1)	1340-1 531 (600-1)	1420-1 3/4 611 (700-1 3/4)	1520-2 1/4 711 (800-2 1/4)

TDZ/CL Rwy 13R
REIL Rwy 13L, 22 and 31R
HIRL Rwy 4-22 and 13R-31L
MIRL Rwy 13L-31R

SAN ANTONIO, TEXAS
Amdt 3 25JAN24

29°32'N-98°28'W

SAN ANTONIO INTL (SAT)

RNAV (GPS) Y RWY 22

SC-3, 07 AUG 2025 to 04 SEP 2025

SC-3, 07 AUG 2025 to 04 SEP 2025