

SAN ANTONIO, TEXAS

AL-369 (FAA)

25163

WAAS CH <b>82409</b> <b>W13A</b>	APP CRS <b>128°</b>	Rwy Ldg TDZE <b>809</b> Apt Elev <b>809</b>
--	------------------------	---

**RNAV (GPS) Y RWY 13R**  
SAN ANTONIO INTL (SAT)

RNP APCH - GPS.

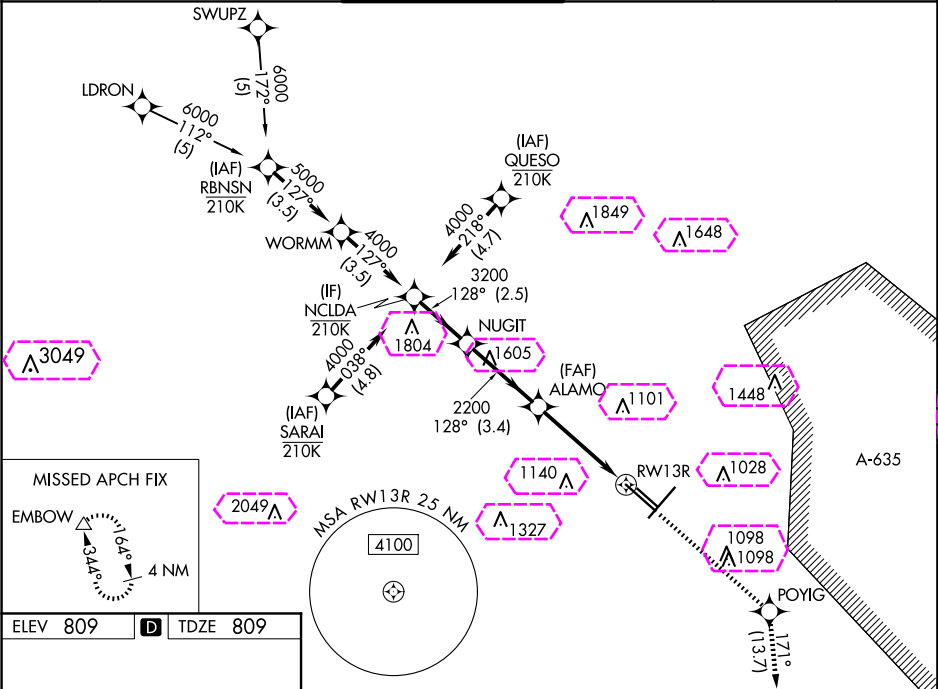
**⚠** Circling NA northwest of Rwy 4 and 13R. For uncompensated Baro-VNAV systems, LNAV/VNAV NA below -5°C or above 54°C. For inop ALS, increase LNAV/VNAV all Cats visibility to RVR 6000 and LNAV Cats C and D visibility to 1% SM.

ALSF-2

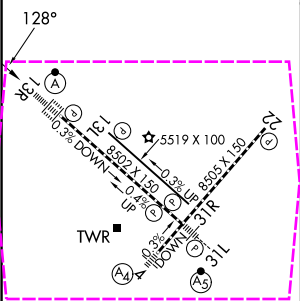


MISSED APPROACH: Climb to 3100 direct POYIG and on track 171° to EMBOW and hold.

D-ATIS <b>118.9</b>	SAN ANTONIO APP CON <b>125.1 307.0</b>	SAN ANTONIO TOWER <b>119.8 257.8</b>	GND CON <b>121.9 348.6</b>	CLNC DEL <b>126.7</b>	CPDLC
------------------------	---	---	-------------------------------	--------------------------	-------



ELEV 809	<b>D</b>	TDZE 809
----------	----------	----------



TDZ/CL Rwy 13R  
REIL Rwy 13L, 22 and 31R  
HIRL Rwy 4-22 and 13R-31L  
MIRL Rwy 13L-31R

VGSI and RNAV glidepath not coincident (VGSI Angle 3.00/TCH 58).			
GP 3.00° TCH 58			
CATEGORY	A	B	D
LPV DA	1009/18 200 (200-½)		
LNAV/VNAV DA	1221/40 412 (500-¾)		
LNAV MDA	1480/24 671 (700-½)	1480-1½ 671 (700-1½)	
CIRCLING	1480-1 671 (700-1)	1480-2 671 (700-2)	1520-2¼ 711 (800-2¼)

SAN ANTONIO, TEXAS  
Amdt 2 25JAN24

29°32'N-98°28'W

SAN ANTONIO INTL (SAT)  
**RNAV (GPS) Y RWY 13R**

SAN ANTONIO, TEXAS




AL-369 (FAA)

25219

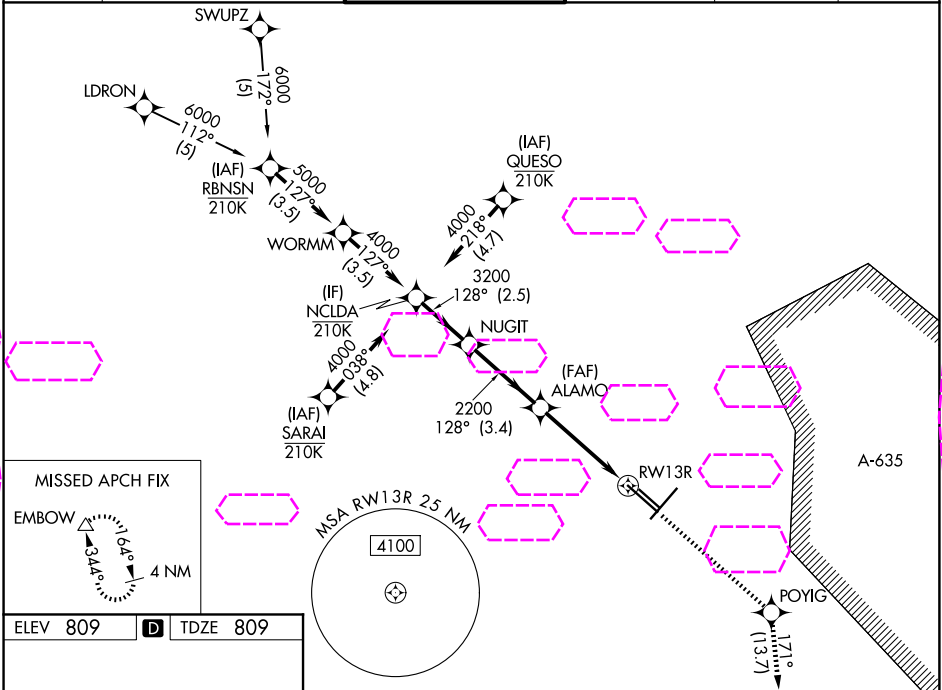
WAAS CH <b>82409</b> <b>W13A</b>	APP CRS <b>128°</b>	Rwy Ldg TDZE <b>809</b> Apt Elev <b>809</b>
--	------------------------	---

# RNAV (GPS) Y RWY 13R

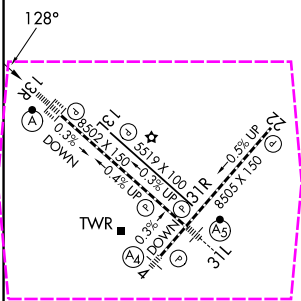
SAN ANTONIO INTL (SAT)

RNP APCH - GPS.		ALSF-2 	MISSED APPROACH: Climb to 3100 direct POYIG and on track 171° to EMBOW and hold.
 	Circling NA northwest of Rwy 4 and 13R. For uncompensated Baro-VNAV systems, LNAV/VNAV NA below -5°C or above 54°C. For inop ALS, increase LNAV/VNAV all Cats visibility to RVR 6000 and LNAV Cats C and D visibility to 1% SM.		

D-ATIS <b>118.9</b>	SAN ANTONIO APP CON <b>125.1 307.0</b>	SAN ANTONIO TOWER <b>119.8 257.8</b>	GND CON <b>121.9 348.6</b>	CLNC DEL <b>126.7</b>	CPDLC
------------------------	---	---	-------------------------------	--------------------------	-------



ELEV <b>809</b>	<b>D</b>	TDZE <b>809</b>
-----------------	----------	-----------------



TDZ/CL Rwy 13R  
REIL Rwy 13L, 22 and 31R  
HIRL Rwy 4-22 and 13R-31L  
MIRL Rwy 13L-31R

VGSI and RNAV glidepath not coincident (VGSI Angle 3.00/TCH 75).			
GP 3.00° TCH 58			
CATEGORY	A	B	C
LPV DA	1009/18 200 (200-½)		
LNAV/VNAV DA	1221/40 412 (500-¾)		
LNAV MDA	1480/24	671 (700-½)	1480-1½ 671 (700-1½)
CIRCLING	1480-1	671 (700-1)	1480-2 671 (700-2) 1520-2¼ 711 (800-2¼)

SAN ANTONIO, TEXAS  
Amdt 2 25JAN24

29°32'N-98°28'W

SAN ANTONIO INTL (SAT)  
RNAV (GPS) Y RWY 13R

SC-3, 07 AUG 2025 to 04 SEP 2025

SC-3, 07 AUG 2025 to 04 SEP 2025