

SAN ANTONIO, TEXAS

AL-369 (FAA)

25163

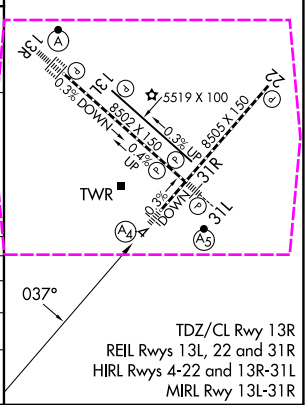
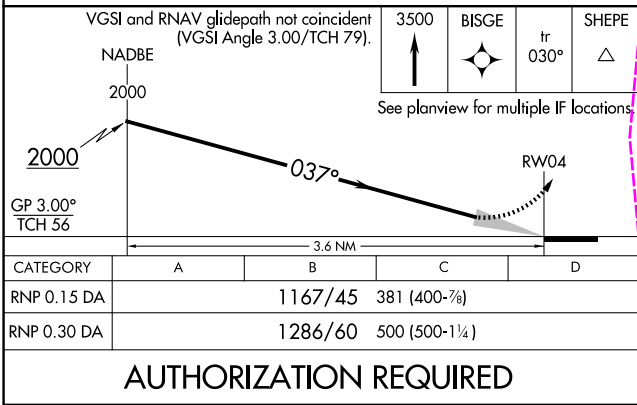
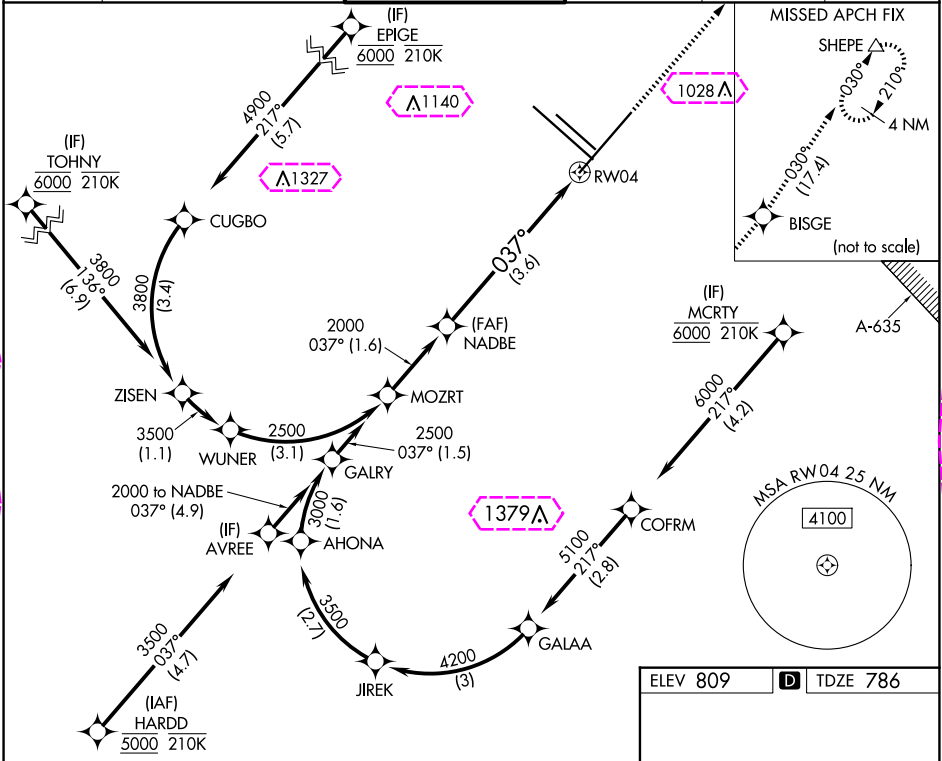
APP CRS	Rwy Ldg	8505
037°	TDZE	786
	Apt Elev	809

RNAV (RNP) Z RWY 4

SAN ANTONIO INTL (SAT)

RNP AR APCH - GPS.			MALS	MISSED APPROACH: Climb to 3500 direct BISGE and track 030° to SHEPE and hold.
▼ For uncompensated Baro-VNAV systems, procedure NA below -5°C or above 54°C.			Ⓜ	

D-ATIS	SAN ANTONIO APP CON	SAN ANTONIO TOWER	GND CON	CLNC DEL	CPDLC
118.9	125.1 307.0	119.8 257.8	121.9 348.6	126.7	



APP CRS 037°	Rwy Ldg TDZE Apt Elev	8505 786 809
------------------------	-----------------------------	---

RNAV (RNP) Z RWY 4
SAN ANTONIO INTL (SAT)

RNP AR APCH - GPS.

T For uncompensated Baro-VNAV systems, procedure NA below -5°C or above 54°C.

MALS

MISSED APPROACH: Climb to 3500 direct BISGE and track 030° to SHEPE and hold.

D-ATIS
118.9

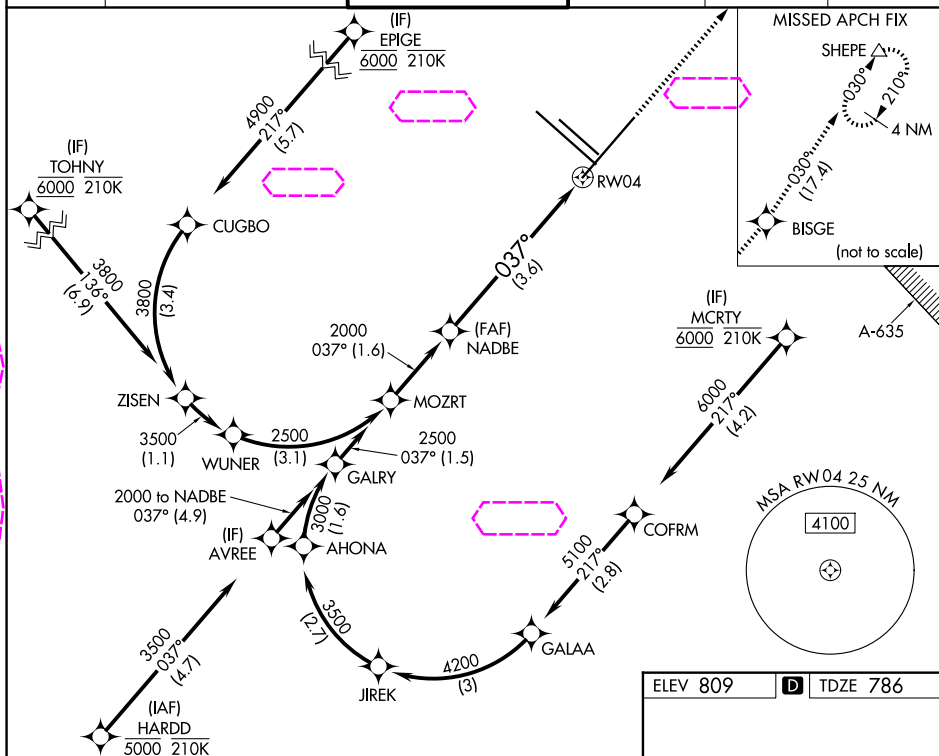
SAN ANTONIO APP CON
125.1 307.0

119.8 257.8

GND CON
121.9 348.6

CLNC DEL
126.7

CPDLC



VGSI and RNAV glidepath not coincident
(VGSI Angle 3.00/TCH 79).

NADRE

3500

BISGF

--	--

SHEPE

See planview for multiple IF locations

2000
GP 3.00°
TCH 56

037°

RW04

B

C

--	--

RNP 0.15 DA

1167/45 381 (400-7/8)

BNP 0.30 DA

1286/60 500 (500-1½)

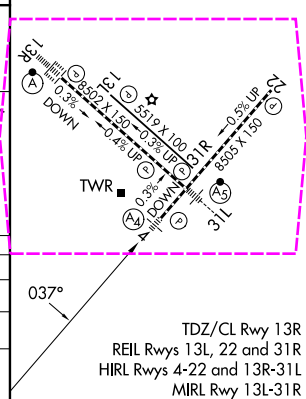
AUTHORIZATION REQUIRED

ELEV 809

D	T
---	---

T

DZE 786



SAN ANTONIO, TEXAS

Amdt 1 25JAN24

SAN ANTONIO INTL (SAT)

RNAV (RNP) Z RWY 4

29°32'N-98°28'W