

SAN ANTONIO, TEXAS

AL-369 (FAA)

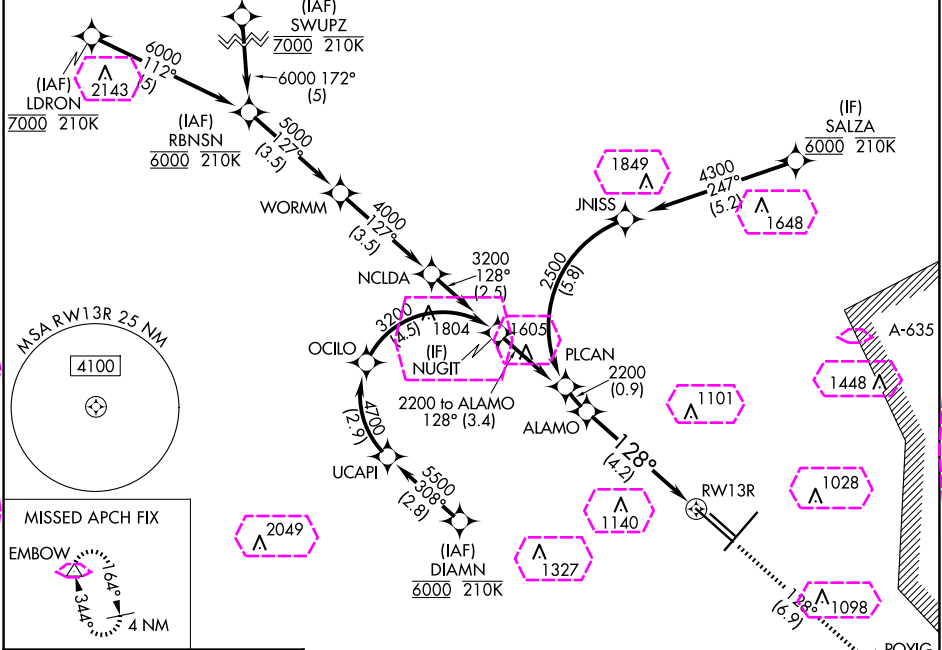
25163

APP CRS	Rwy Ldg	8502
128°	TDZE	809
	Apt Elev	809

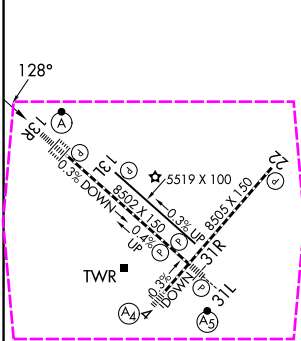
RNAV (RNP) Z RWY 13R

SAN ANTONIO INTL (SAT)

RNP AR APCH - GPS.		ALSIF-2	MISSED APPROACH: (Do not exceed 210K until POYIG) Climb to 3100 on track 128° to POYIG and track 171° to EMBOW and hold.		
For uncompensated Baro-VNAV systems, procedure NA below -5°C or above 54°C. For inop ALS, increase RNP 0.3 all Cats visibility to RVR 6000.					
D-ATIS	SAN ANTONIO APP CON	SAN ANTONIO TOWER	GND CON	CLNC DEL	CPDLC
118.9	125.1 307.0	119.8 257.8	121.9 348.6	126.7	



ELEV 809	TDZE 809
----------	----------

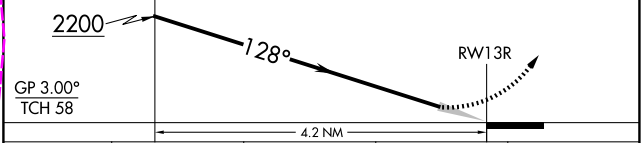


TDZ/CL Rwy 13R
REIL Rwy 13L, 22 and 31R
HIRL Rwy 4-22 and 13R-31L
MIRL Rwy 13L-31R

VGSI and RNAV glidepath not coincident (VGSI Angle 3.00/TCH 75).

3100	POYIG	EMBOW
tr 128°	tr 171°	

See planview for multiple IF locations.



CATEGORY	A	B	C	D
RNP 0.15 DA		1137/26	328 (400-½)	
RNP 0.30 DA		1218/40	409 (500-¾)	

AUTHORIZATION REQUIRED

SAN ANTONIO, TEXAS
Amdt 1 25JAN24

SAN ANTONIO INTL (SAT)
29°32'N-98°28'W
RNAV (RNP) Z RWY 13R

SC-3, 10 JUL 2025 to 07 AUG 2025

SC-3, 10 JUL 2025 to 07 AUG 2025

SC-3, 07 AUG 2025 to 04 SEP 2025