

SAN ANTONIO, TEXAS

AL-369 (FAA)

25163

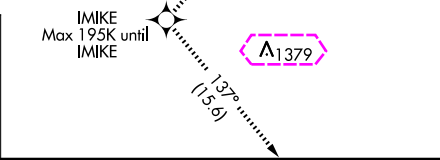
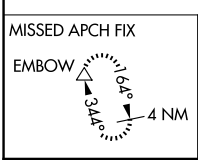
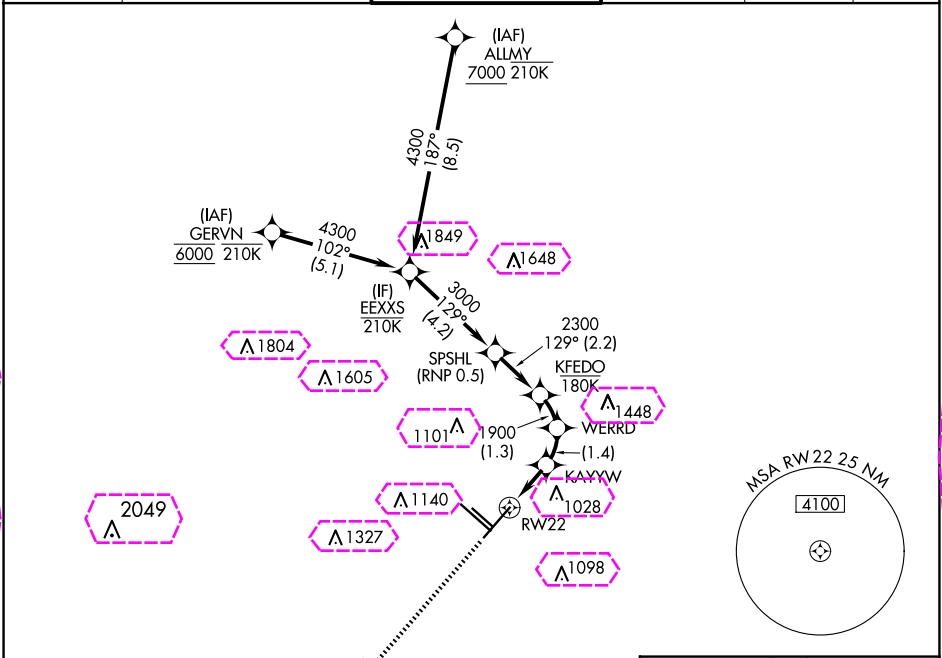
APP CRS	Rwy Ldg	8505
217°	TDZE	770
	Apt Elev	809

# RNAV (RNP) X RWY 22

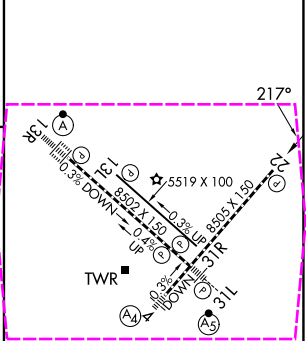
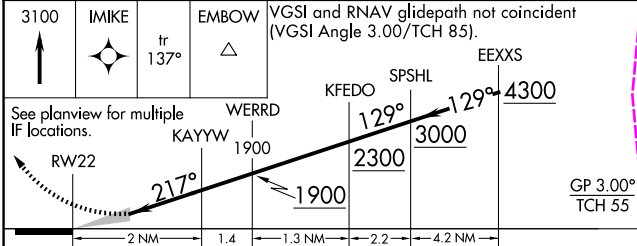
SAN ANTONIO INTL (SAT)

RNP AR APCH - GPS.	MISSED APPROACH: (Do not exceed 195K until IMIKE) Climb to 3100 direct IMIKE and on track 137° EMBOW and hold.
▼ For uncompensated Baro-VNAV systems, procedure NA below -5°C or above 54°C.	

D-ATIS 118.9	SAN ANTONIO APP CON 125.1 307.0	SAN ANTONIO TOWER 119.8 257.8	GND CON 121.9 348.6	CLNC DEL 126.7	CPDLC
-----------------	------------------------------------	----------------------------------	------------------------	-------------------	-------



ELEV 809	TDZE 770
----------	----------



CATEGORY	A	B	C	D
RNP 0.15 DA	1070-7/8	300 (300-7/8)		
RNP 0.30 DA	1222-13/8	452 (500-13/8)		

TDZ/CL Rwy 13R  
REIL Rws 13L, 22 and 31R  
HIRL Rws 4-22 and 13R-31L  
MIRL Rwy 13L-31R

## AUTHORIZATION REQUIRED

SAN ANTONIO, TEXAS  
Orig-A 11JUL24

29°32'N-98°28'W

# RNAV (RNP) X RWY 22

SC-3, 10 JUL 2025 to 07 AUG 2025

SC-3, 10 JUL 2025 to 07 AUG 2025

SAN ANTONIO, TEXAS

AL-369 (FAA)

25219

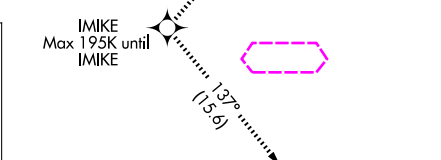
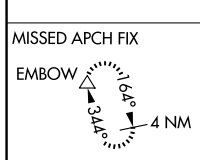
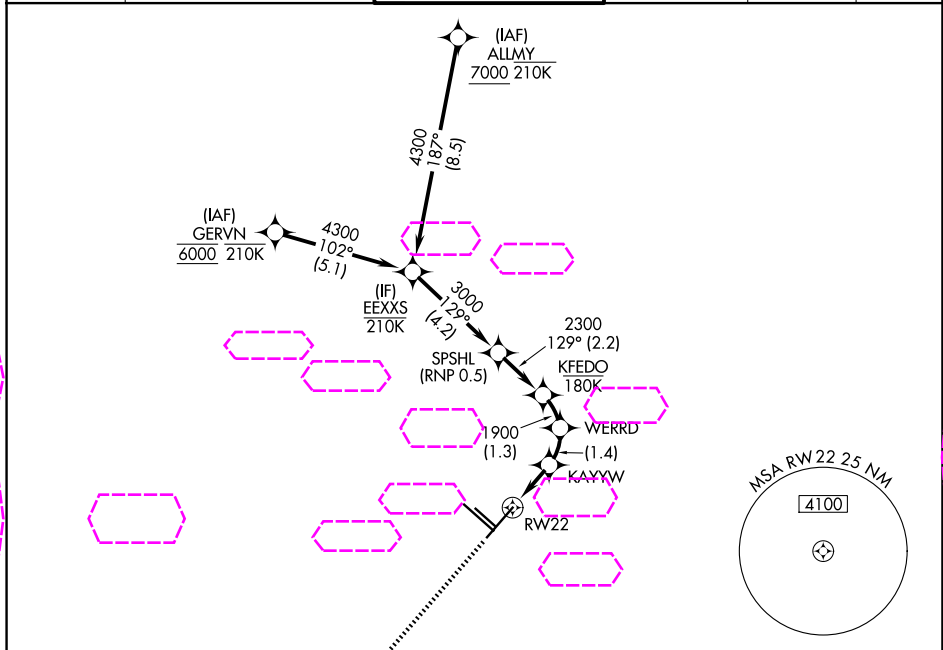
APP CRS	Rwy Ldg	8505
217°	TDZE	770
	Apt Elev	809

# RNAV (RNP) X RWY 22

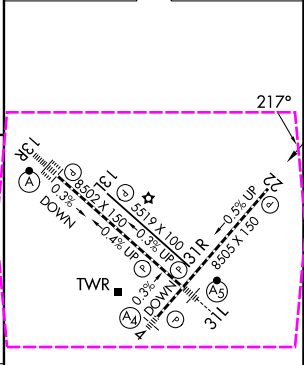
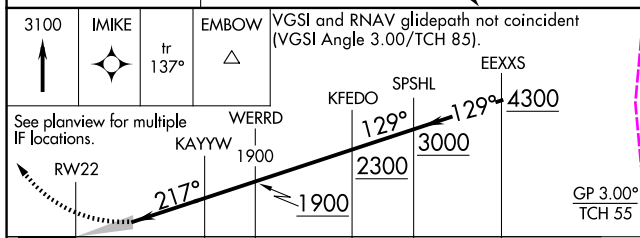
SAN ANTONIO INTL (SAT)

RNP AR APCH - GPS.	MISSED APPROACH: (Do not exceed 195K until IMIKE) Climb to 3100 direct IMIKE and on track 137° EMBOW and hold.
▼ For uncompensated Baro-VNAV systems, procedure NA below -5°C or above 54°C.	

D-ATIS 118.9	SAN ANTONIO APP CON 125.1 307.0	SAN ANTONIO TOWER 119.8 257.8	GND CON 121.9 348.6	CLNC DEL 126.7	CPDLC
-----------------	------------------------------------	----------------------------------	------------------------	-------------------	-------



ELEV 809	TDZE 770
----------	----------



CATEGORY	A	B	C	D
RNP 0.15 DA	1070-7/8	300 (300-7/8)		
RNP 0.30 DA	1222-13/8	452 (500-13/8)		

TDZ/CL Rwy 13R
REIL Rwy 13L, 22 and 31R
HIRL Rwy 4-22 and 13R-31L
MIRL Rwy 13L-31R

## AUTHORIZATION REQUIRED

SAN ANTONIO, TEXAS  
Orig-A 11JUL24

29°32'N-98°28'W

# RNAV (RNP) X RWY 22

SC-3, 07 AUG 2025 to 04 SEP 2025