

LOC/DME I-SAT <b><u>109.7</u></b> Chan <b>34</b>	APP CRS <b>037°</b>	Rwy Ldg <b>8505</b> TDZE <b>786</b> Apt Elev <b>809</b>
--	------------------------	---

ILS or LOC RWY 4  
SAN ANTONIO INTL (SAT)

RNP APCH-GPS. From TRAGO or PICLO or FRIZA.

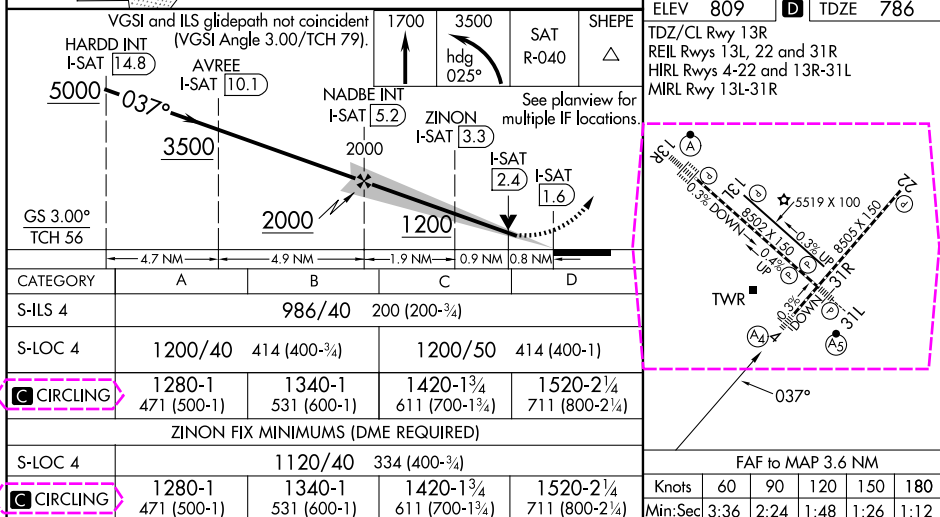
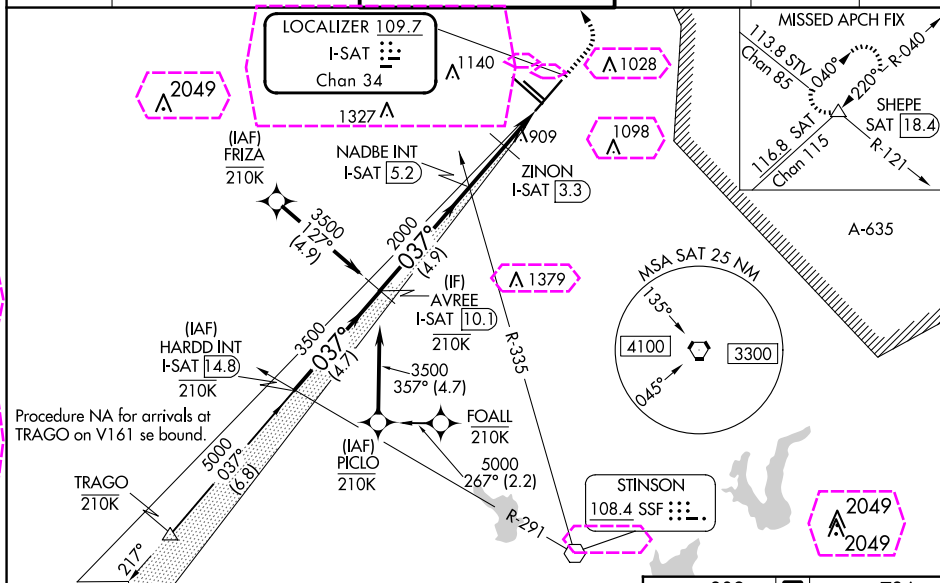
Aircraft not GPS equipped - RADAR required for procedure entry.

**T** Circling NA northwest of Rwy 4 and 13R. Autopilot coupled approach  
**A** NA below 1189. Inop table does not apply to S-ILS 4. For inop ALS,  
 increase S-LOC 4 Cat C/D visibility to RVR 6000.

MALS

**MISSED APPROACH:** Climb to 1700 then climbing left turn to 3500 on heading 025° and on SAT VORTAC R-040 to SHEPE INT/SAT 18.4 DME and hold.

D-ATIS 118.9	SAN ANTONIO APP CON 125.1 307.0	SAN ANTONIO TOWER 119.8 257.8	GND CON 121.9 348.6	CLNC DEL 126.7	CPDLC
-----------------	------------------------------------	----------------------------------	------------------------	-------------------	-------



SAN ANTONIO, TEXAS

AL-369 (FAA)

25219

LOC/DME I-SAT <b>109.7</b> Chan <b>34</b>	APP CRS <b>037°</b>	Rwy Ldg TDZE <b>786</b> Apt Elev <b>809</b>
---	------------------------	---

# ILS or LOC RWY 4

## SAN ANTONIO INTL (SAT)

RNP APCH-GPS. From TRAGO or PICLO or FRIZA.

Aircraft not GPS equipped - RADAR required for procedure entry.

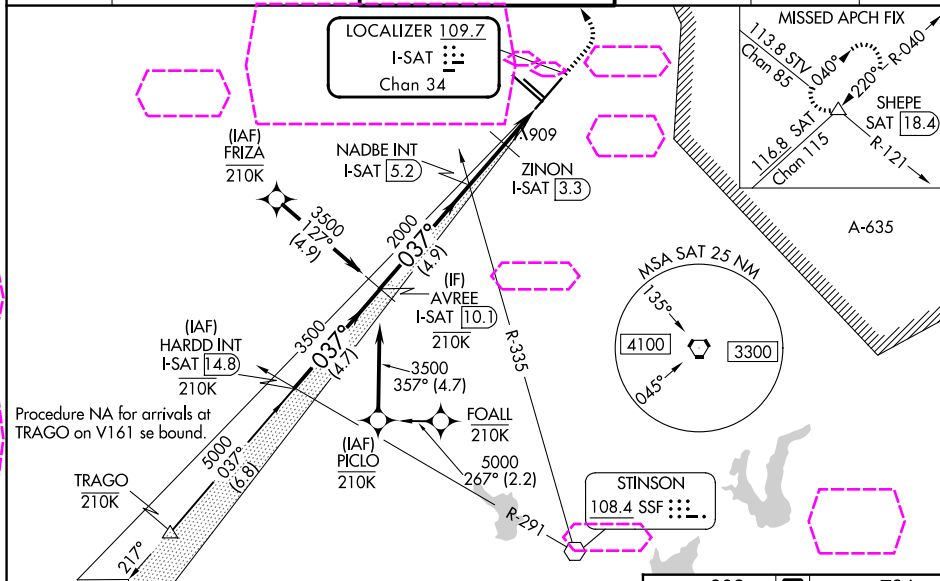
**NA** Circling NA northwest of Rws 4 and 13R. Autopilot coupled approach NA below 1189. Inop table does not apply to S-ILS 4. For inop ALS, increase S-LOC 4 Cat C/D visibility to RVR 6000.

MALS



MISSED APPROACH: Climb to 1700 then climbing left turn to 3500 on heading 025° and on SAT VORTAC R-040 to SHEPE INT/SAT 18.4 DME and hold.

D-ATIS <b>118.9</b>	SAN ANTONIO APP CON <b>125.1 307.0</b>	SAN ANTONIO TOWER <b>119.8 257.8</b>	GND CON <b>121.9 348.6</b>	CLNC DEL <b>126.7</b>	CPDLC
------------------------	---	---	-------------------------------	--------------------------	-------



VGSIs and ILS glidepath not coincident (VGSi Angle 3.00/TCH 79).				ELEV 809	TDZE 786												
HARDD INT I-SAT 14.8	AVREE I-SAT 10.1	NADBE INT I-SAT 5.2	ZINON I-SAT 3.3	SAT R-040	SHEPE												
See planview for multiple IF locations.																	
GS 3.00° TCH 56	4.7 NM	4.9 NM	1.9 NM	0.9 NM	0.8 NM												
CATEGORY	A	B	C	D													
S-ILS 4	986/40		200 (200-¾)														
S-LOC 4	1200/40	414 (400-¾)	1200/50	414 (400-1)													
CIRCLING	1280-1 471 (500-1)	1340-1 531 (600-1)	1420-1¾ 611 (700-1¾)	1520-2¼ 711 (800-2¼)													
ZINON FIX MINIMUMS (DME REQUIRED)																	
S-LOC 4	1120/40		334 (400-¾)														
CIRCLING	1280-1 471 (500-1)	1340-1 531 (600-1)	1420-1¾ 611 (700-1¾)	1520-2¼ 711 (800-2¼)													
FAF to MAP 3.6 NM																	
<table border="1"> <tr> <td>Knots</td><td>60</td><td>90</td><td>120</td><td>150</td><td>180</td></tr> <tr> <td>Min:Sec</td><td>3:36</td><td>2:24</td><td>1:48</td><td>1:26</td><td>1:12</td></tr> </table>						Knots	60	90	120	150	180	Min:Sec	3:36	2:24	1:48	1:26	1:12
Knots	60	90	120	150	180												
Min:Sec	3:36	2:24	1:48	1:26	1:12												

SAN ANTONIO, TEXAS

Amdt 23 25JAN24

29°32'N-98°28'W

# SAN ANTONIO INTL (SAT)

## ILS or LOC RWY 4

SC-3, 07 AUG 2025 to 04 SEP 2025

SC-3, 07 AUG 2025 to 04 SEP 2025