

SC-3, 10 JUL 2025 to 07 AUG 2025

SAN ANTONIO, TEXAS

AL-369 (FAA)

25219

LOC/DME I-ZR 110.9 Chan 46	APP CRS 308°	Rwy 31L Ldg 8502 TDZE 790 Apt Elev 809	Rwy 31R Ldg 5519 TDZE 788 Apt Elev 809
--	------------------------	---	---

ILS or LOC RWY 31L

SAN ANTONIO INTL (SAT)

RNP APCH - GPS.

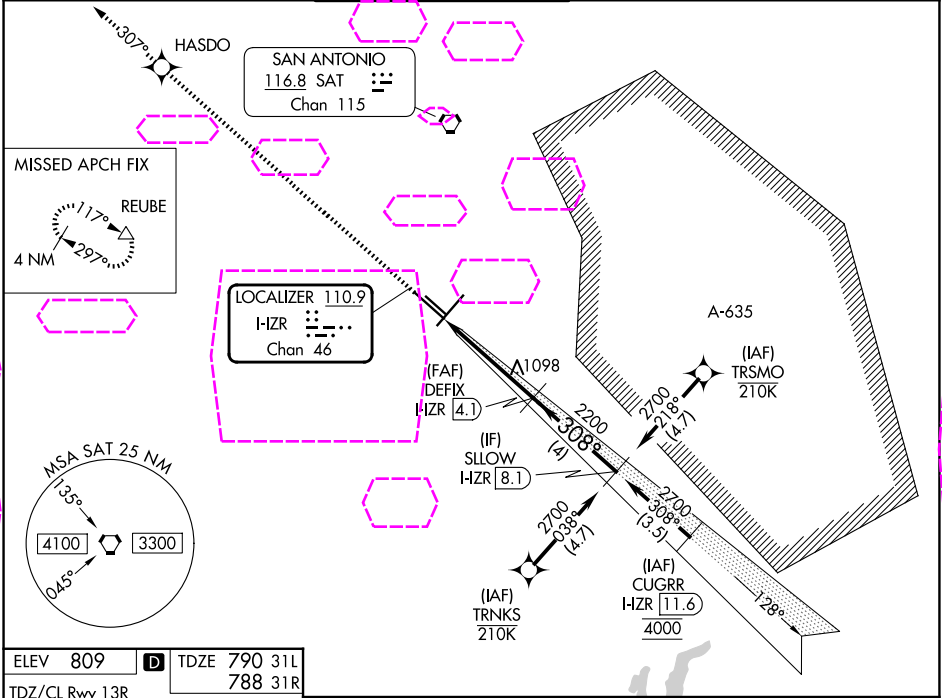
Aircraft not GPS equipped - RADAR required for procedure entry. DME required.

- ⚠ Circling NA northwest of Rwys 4 and 13R.
- ⚠ *RVR 1800 authorized with use of FD or AP or HUD to DA.



MISSED APPROACH: Climb to 4200 direct HASDO and track 307° to REUBE and hold.

D-ATIS 118.9	SAN ANTONIO APP CON 125.1 307.0	SAN ANTONIO TOWER 119.8 257.8	GND CON 121.9 348.6	CLNC DEL 126.7	CPDLC
------------------------	---	---	-------------------------------	--------------------------	-------

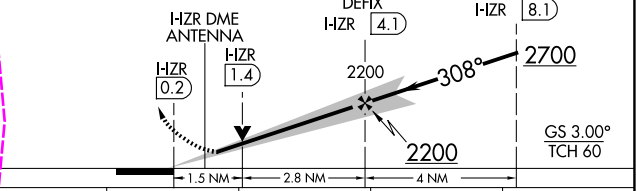
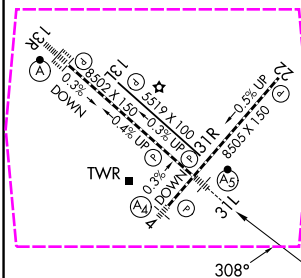


ELEV 809	D	TDZE 790 31L 788 31R
-----------------	----------	---------------------------------------

TDZ/CL Rwy 13R
REIL Rwys 13L, 22 and 31R
HIRL Rwys 4-22 and 13R-31L
MIRL Rwy 13L-31R



VGSI and ILS glidepath not coincident
(VGSI Angle 3.00/TCH 82).



CATEGORY	A	B	C	D
S-ILS 31L *	990/24 200 (200-½)			
S-LOC 31L	1360/24	570 (600-½)	1360/60	570 (600-¼)
SIDESTEP 31R	1360-1	572 (600-1)	1360-1½ 572 (600-½)	1360-2 572 (600-2)
CIRCLING	1360-1	551 (600-1)	1420-1¾ 611 (700-¼)	1520-2¼ 711 (800-2¼)

FAF to MAP 4.3 NM					
Knots	60	90	120	150	180
Min:Sec	4:18	2:52	2:09	1:43	1:26

SAN ANTONIO, TEXAS

Amdt 12 25JAN24

29°32'N-98°28'W

SAN ANTONIO INTL (SAT)

ILS or LOC RWY 31L

SC-3, 07 AUG 2025 to 04 SEP 2025

SC-3, 07 AUG 2025 to 04 SEP 2025