

SAN ANTONIO, TEXAS

AL-369 (FAA)

25163

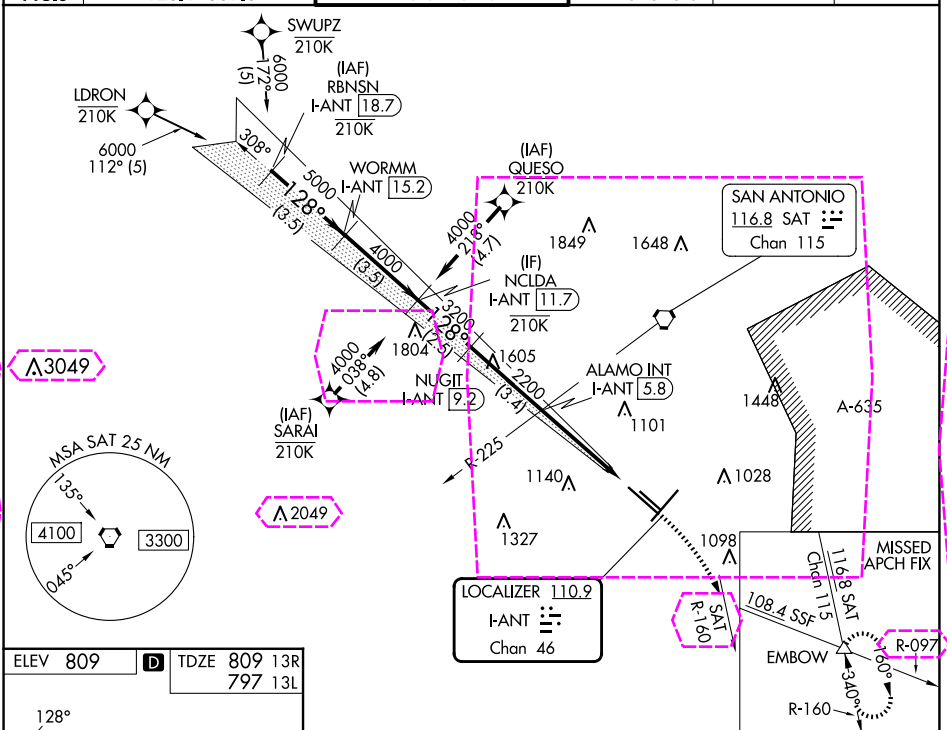
LOC/DME I-ANT 110.9 Chan 46	APP CRS 128°	Rwy 13R Ldg TDZE Apt Elev	8502 809 809	Rwy 13L Ldg TDZE Apt Elev	5519 797 809
---	------------------------	---------------------------------	---	---------------------------------	---

ILS or LOC RWY 13R

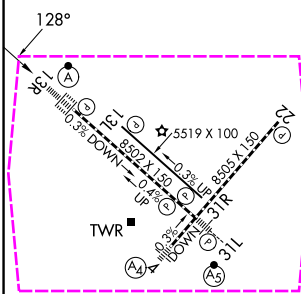
SAN ANTONIO INTL (SAT)

RNP APCH-GPS. From LDRON, SWUPZ, SARAI, QUESO.	ALSF-2 A	MISSED APPROACH: Climb to 3100 on heading 128° and SAT VORTAC R-160 to EMBOW INT and hold.
RNAV 1-GPS or RADAR required for procedure entry. DME required.		

A Circling NA northwest of Rws 4 and 13R.	D-ATIS 118.9	SAN ANTONIO APP CON 125.1 307.0	SAN ANTONIO TOWER 119.8 257.8	GND CON 121.9 348.6	CLNC DEL 126.7	CPDLC
--	------------------------	---	---	-------------------------------	--------------------------	-------



ELEV 809	D	TDZE 809 13R 797 13L
-----------------	----------	---------------------------------------



TDZ/CL Rwy 13R	REIL Rws 13L, 22 and 31R	HIRL Rws 4-22 and 13R-31L	MIRL Rwy 13L-31R
FAF to MAP 4.2 NM			
Knots	60	90	120 150 180
Min:Sec	4:12	2:48	2:06 1:41 1:24

VGSI and ILS glidepath not coincident (VGSI Angle 3.00/TCH 75).			
NCLDA I-ANT 11.7	NUGIT I-ANT 9.2	ALAMO INT I-ANT 5.8	
4000	3200	2200	
GS 3.00° TCH 58			
2.5 NM 3.4 NM 2.4 NM 1.8 NM			
CATEGORY	A	B	C D
S-ILS 13R	1009/18 200 (200-½)		
S-LOC 13R	1460/24	651 (700-½)	1460-1⅓ 651 (700-1⅓)
SIDESTEP 13L	1480-1	683 (700-1)	1480-2 683 (700-2¼) 1480-2¼ 683 (700-2¼)
CIRCLING	1480-1	671 (700-1)	1480-2 671 (700-2) 1520-2¼ 711 (800-2¼)

SAN ANTONIO, TEXAS
Amdt 15 25JAN24

29°32'N-98°28'W

SAN ANTONIO INTL (SAT)

ILS or LOC RWY 13R

SAN ANTONIO, TEXAS

AL-369 (FAA)

25219

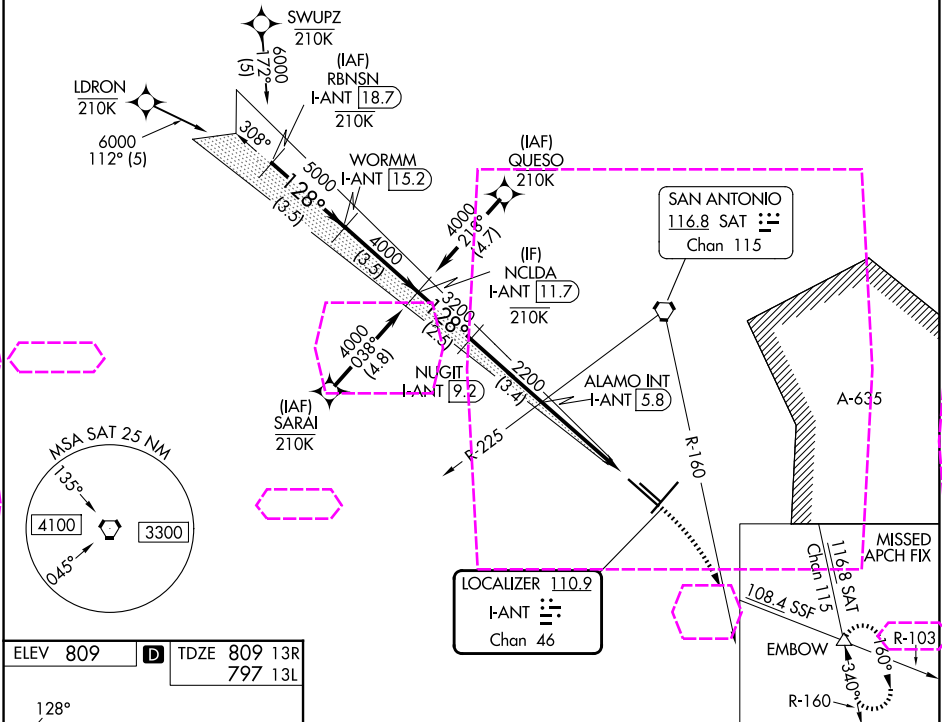
LOC/DME I-ANT 110.9 Chan 46	APP CRS 128°	Rwy 13R Ldg 8502 TDZE 809 Apt Elev 809	Rwy 13L Ldg 5519 TDZE 797 Apt Elev 809
---	------------------------	---	---

ILS or LOC RWY 13R

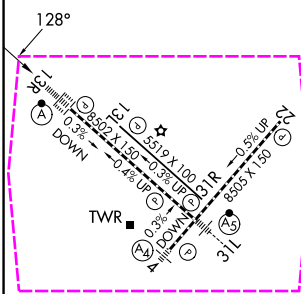
SAN ANTONIO INTL (SAT)

RNP APCH-GPS. From LDRON, SWUPZ, SARAI, QUESO.	ALSF-2 A	MISSED APPROACH: Climb to 3100 on heading 128° and SAT VORTAC R-160 to EMBOW INT and hold.
RNAV 1-GPS or RADAR required for procedure entry. DME required.		
Circling NA northwest of Rws 4 and 13R.		

D-ATIS 118.9	SAN ANTONIO APP CON 125.1 307.0	SAN ANTONIO TOWER 119.8 257.8	GND CON 121.9 348.6	CLNC DEL 126.7	CPDLC
------------------------	---	---	-------------------------------	--------------------------	-------



ELEV 809	D	TDZE 809 13R 797 13L
-----------------	----------	---------------------------------------



TDZ/CL Rwy 13R	REIL Rws 13L, 22 and 31R	HIRL Rws 4-22 and 13R-31L	MIRL Rwy 13L-31R
FAF to MAP 4.2 NM			
Knots	60	90	120 150 180
Min:Sec	4:12	2:48	2:06 1:41 1:24

VGSI and ILS glidepath not coincident (VGSI Angle 3.00/TCH 75).			
NCLDA I-ANT 11.7	NUGIT I-ANT 9.2	ALAMO INT I-ANT 5.8	SAT R-160
4000	3200	2200	3100
GS 3.00° TCH 58			
hdg 128°			
2.5 NM 3.4 NM 2.4 NM 1.8 NM			
CATEGORY	A	B	C D
S-ILS 13R	1009/18 200 (200-½)		
S-LOC 13R	1460/24	651 (700-½)	1460-1⅓ 651 (700-1⅓)
SIDESTEP 13L	1480-1	683 (700-1)	1480-2 683 (700-2) 1480-2¼ 683 (700-2¼)
CIRCLING	1480-1	671 (700-1)	1480-2 671 (700-2) 1520-2¼ 711 (800-2¼)

SAN ANTONIO, TEXAS
Amdt 15 25JAN24

29°32'N-98°28'W

SAN ANTONIO INTL (SAT)

ILS or LOC RWY 13R

SC-3, 07 AUG 2025 to 04 SEP 2025

SC-3, 07 AUG 2025 to 04 SEP 2025