

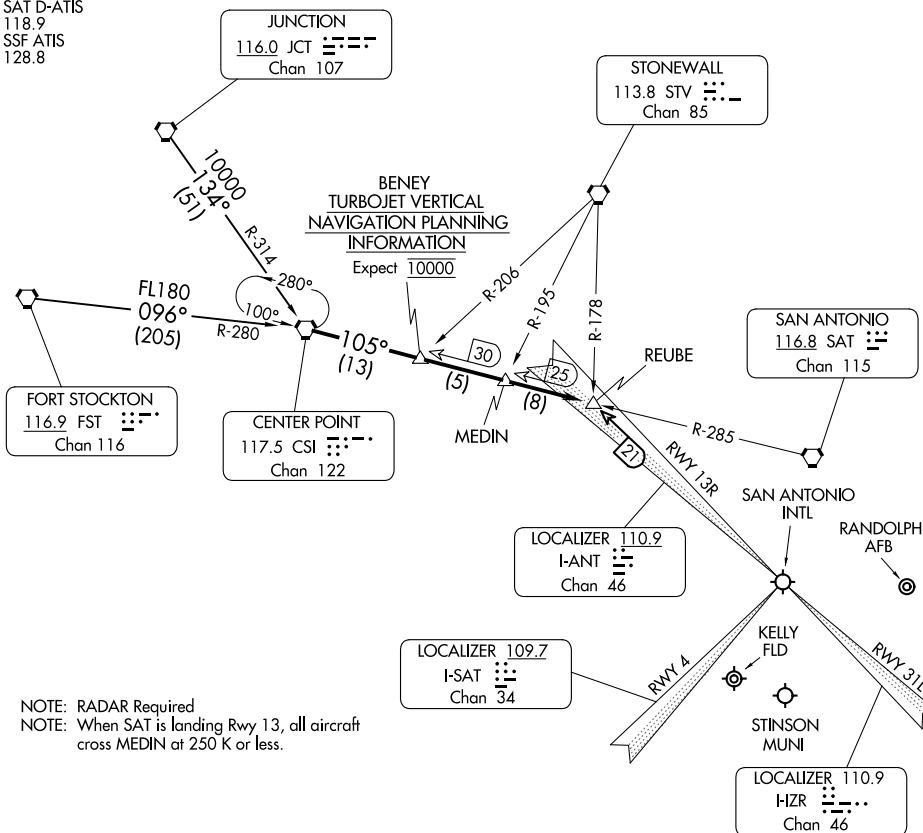
(CSI.CS12) 24025

AL-369 (FAA)

CENTERPOINT TWO ARRIVAL

SAN ANTONIO, TEXAS

SAN ANTONIO APP CON
 125.1 307.0 (Rwys 13R and 22)
 125.7 290.225 (Rwys 4 and 31L)
 KRND ATIS ★
 290.525
 KSKF ATIS
 120.45 273.5
 SAT D-ATIS
 118.9
 SSF ATIS
 128.8



ARRIVAL ROUTE DESCRIPTION

FORT STOCKTON TRANSITION (FST.CS12): From over FST VORTAC via FST R-096 and CSI R-280 to CSI VORTAC. Thence . . .

JUNCTION TRANSITION (JCT.CS12): From over JCT VORTAC via JCT R-134 and CSI R-314 to CSI VORTAC. Thence . . .

. . . From over CSI VORTAC on CSI R-105 to REUBE INT. Expect vectors to final approach course.

CENTERPOINT TWO ARRIVAL

SAN ANTONIO, TEXAS

(CSI.CS12) 02MAR17

SC-3, 10 JUL 2025 to 07 AUG 2025

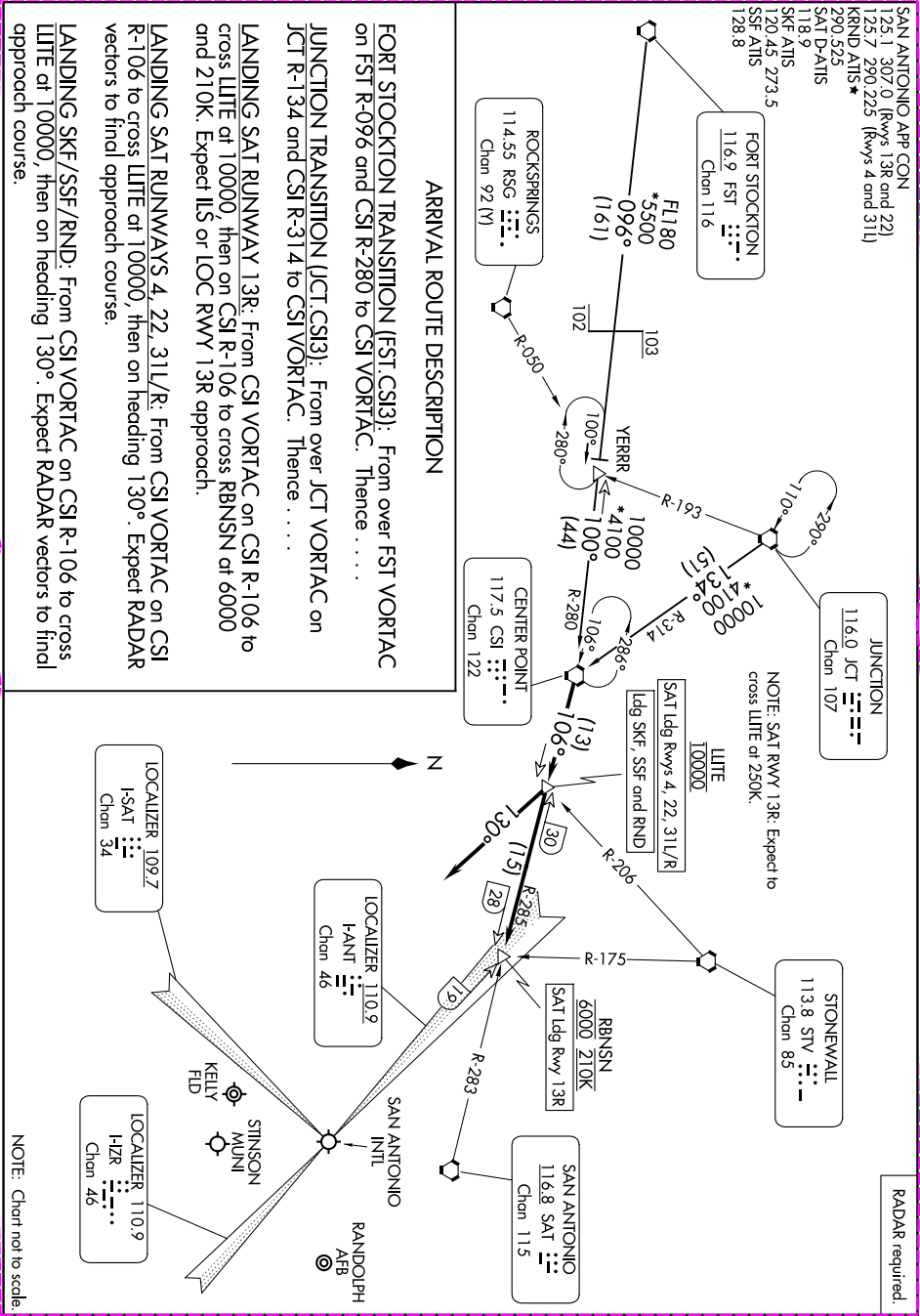
SC-3, 10 JUL 2025 to 07 AUG 2025

(CSI.CS13) 25219

AL-369 (FAA)

CENTERPOINT THREE ARRIVAL

SAN ANTONIO, TEXAS



SC-3, 07 AUG 2025 to 04 SEP 2025

5202 SEP 04 to 5202 NOV 20 3-SC

CENTERPOINT THREE ARRIVAL

SAN ANTONIO, TEXAS

(CSI.CS13) 07AUG25