

(BOWIE7.BOWIE) 24137

AL-369 (FAA)

SAN ANTONIO INTL (SAT)

SAN ANTONIO, TEXAS

BOWIE SEVEN DEPARTURE

**TOP ALTITUDE:
5000**

D-ATIS

118.9

CLNC DEL

126.7

CPDLC

GND CON

121.9 348.6

SAN ANTONIO DEP CON

125.7 290.225 (Rwys 13/22/31)

127.1 269.1 (Rwy 4 CORPUS CHRISTI TRANSITION)

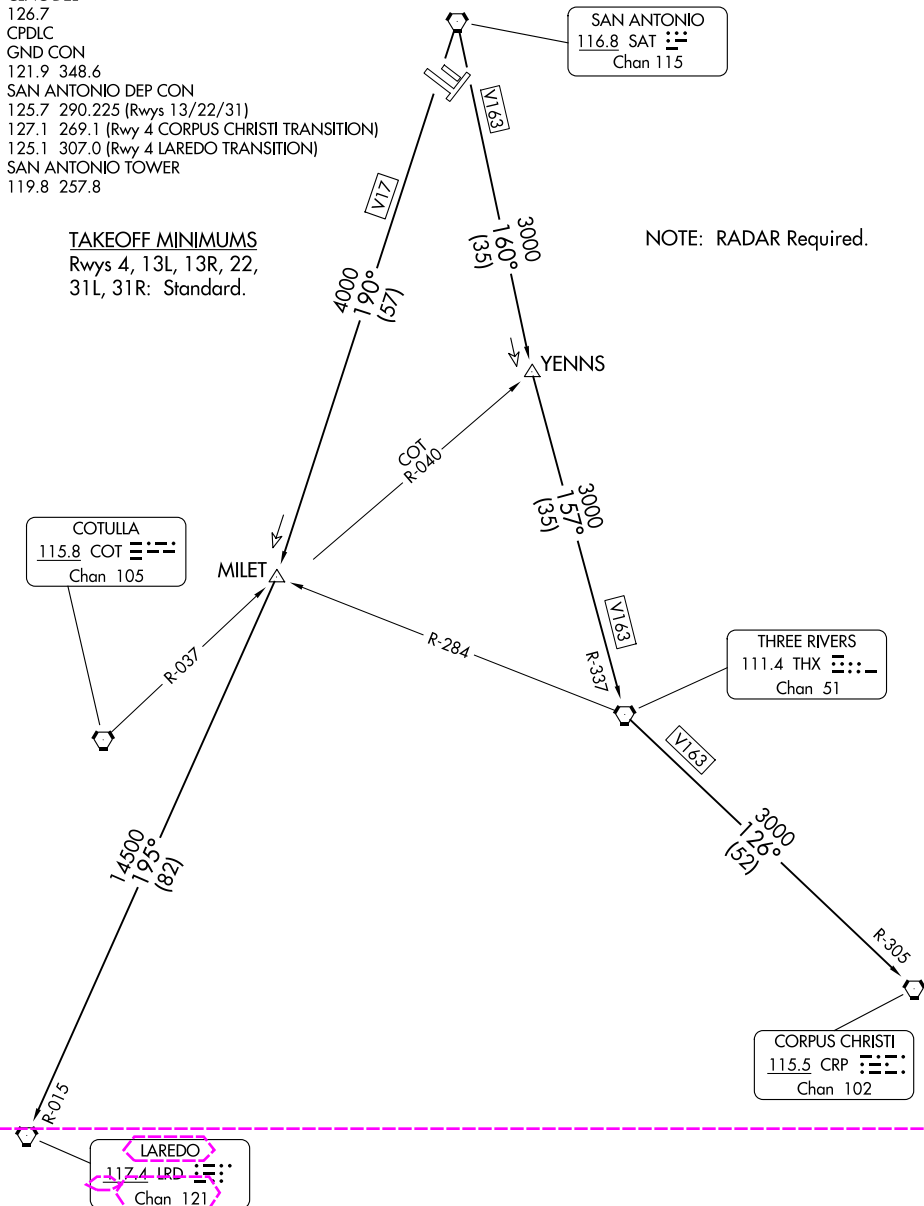
125.1 307.0 (Rwy 4 LAREDO TRANSITION)

SAN ANTONIO TOWER

119.8 257.8

TAKEOFF MINIMUMSRwys 4, 13L, 13R, 22,
31L, 31R: Standard.

NOTE: RADAR Required.



NOTE: Chart not to scale.

(CONTINUED ON FOLLOWING PAGE)

BOWIE SEVEN DEPARTURE

SAN ANTONIO, TEXAS

SAN ANTONIO INTL (SAT)

(BOWIE7.BOWIE) 02MAR17

SC-3, 10 JUL 2025 to 07 AUG 2025

SC-3, 10 JUL 2025 to 07 AUG 2025

(BOWIE8.BOWIE) 25219

AL-369 (FAA)

SAN ANTONIO INTL (SAT)

SAN ANTONIO, TEXAS

BOWIE EIGHT DEPARTURE

SAN ANTONIO DEP CON

125.7 290.225 (Rwys 13, 22, 31)

127.1 269.1 (Rwy 4 CORPUS CHRISTI Transition)

125.1 307.0 (Rwy 4 LAREDO Transition)

D-ATIS

118.9

CLNC DEL

126.7

CPDLC

GND CON

121.9 348.6

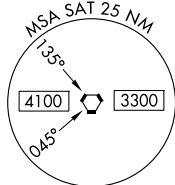
SAN ANTONIO TOWER

119.8 257.8

RADAR required.
DME required.**TOP ALTITUDE:
5000**SAN ANTONIO
116.8 SAT
Chan 115

TAKEOFF MINIMUMS

Rwys 4, 13L/R, 22, 31L/R: Standard.

COTULLA
115.8 COT
Chan 105

MILET

SLENA

SKIDS

ALICE

114.5 ALI

CORPUS CHRISTI
115.5 CRP
Chan 102

LAREDO

117.4 LRD

Chan 121

NOTE: Chart not to scale.

(CONTINUED ON FOLLOWING PAGE)

BOWIE EIGHT DEPARTURE

(BOWIE8.BOWIE) 07AUG25

SAN ANTONIO, TEXAS

SAN ANTONIO INTL (SAT)

SC-3, 07 AUG 2025 to 04 SEP 2025

SC-3, 07 AUG 2025 to 04 SEP 2025