

(ALISS6.ALISS) 24081

AL-369 (FAA)

SAN ANTONIO INTL (SAT)

SAN ANTONIO, TEXAS

ALISS SIX DEPARTURE (RNAV)

SAN ANTONIO DEP CON
125.1 307.0 (Rwy 31L/R)
125.7 290.225 (Rwys 13L/R, 22)
127.1 269.1 (Rwy 4)

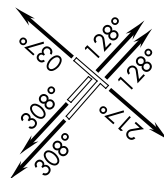
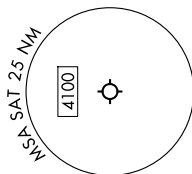
D-ATIS
118.9

CLNC DEL
126.7

CPDLC

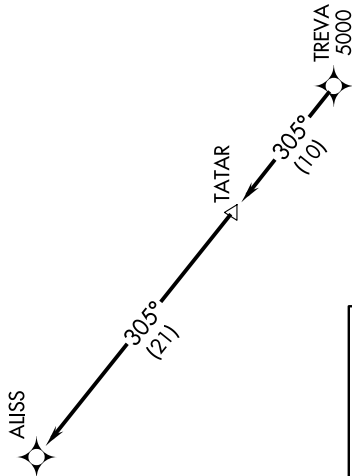
GND CON
121.9 348.6

SAN ANTONIO TOWER
119.8 257.8



TOP ALTITUDE:
5000

RNAV 1 - GPS.
RADAR required.



NOTE: Chart not to scale.

TAKEOFF MINIMUMS
Rwys 4, 13L/R, 22, 31L/R: Standard.

DEPARTURE ROUTE DESCRIPTION

TAKEOFF RUNWAY 4: Climb on heading 037° or as assigned by ATC, for vectors to TREVA, thence . . .

TAKEOFF RUNWAYS 13L/R: Climb on heading 128° or as assigned by ATC, for vectors to TREVA, thence . . .

TAKEOFF RUNWAY 22: Climb on heading 217° or as assigned by ATC, for vectors to TREVA, thence . . .

TAKEOFF RUNWAYS 31L/R: Climb on heading 308° or as assigned by ATC, for vectors to TREVA, thence . . .

. . . on track 305° to TATAR, then on track 305° to ALISS. Maintain 5000.

ALISS SIX DEPARTURE (RNAV)

(ALISS6.ALISS) 25JAN24

SAN ANTONIO, TEXAS

SAN ANTONIO INTL (SAT)

