

(ALAMO4.ALAMO) 24305

AL-369 (FAA)

## ALAMO FOUR DEPARTURE

SAN ANTONIO INTL (SAT)

SAN ANTONIO, TEXAS

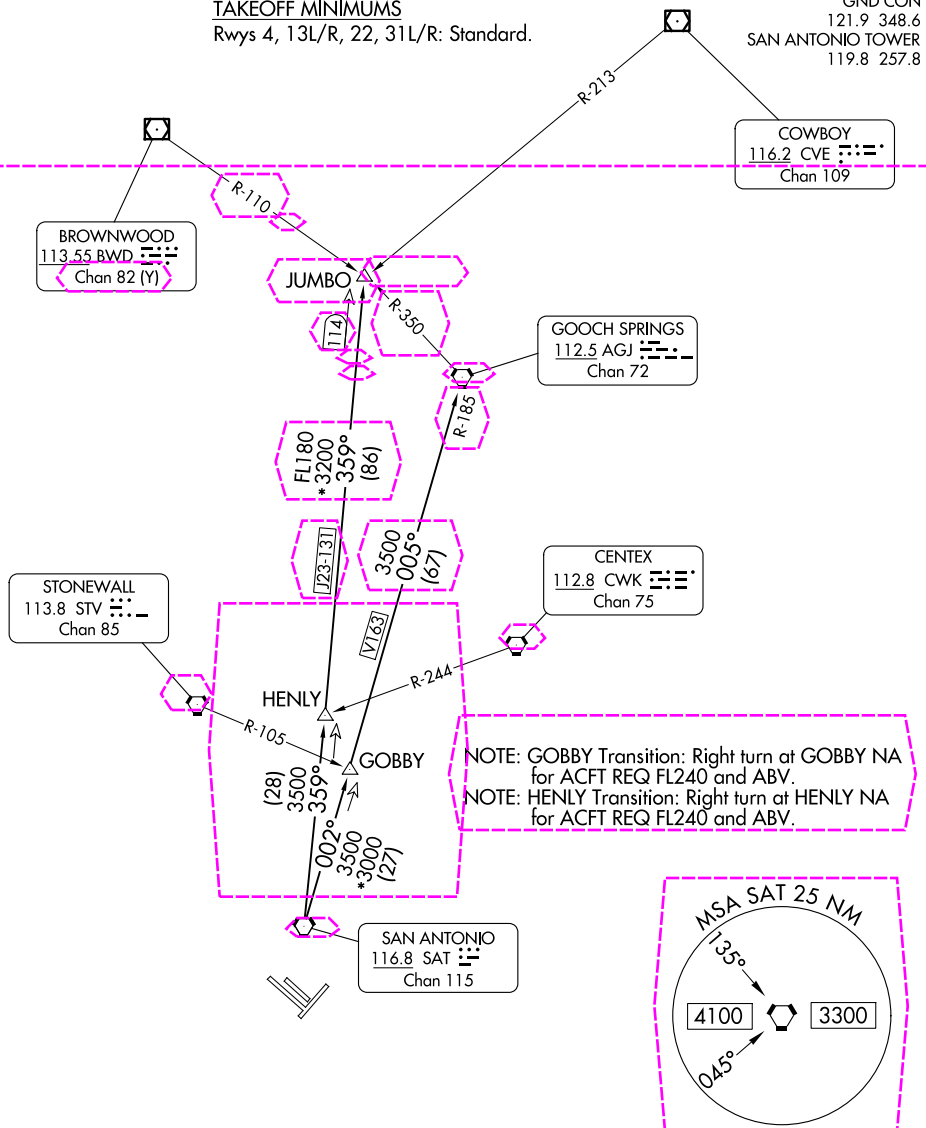
**TOP ALTITUDE:  
5000**

RADAR required.

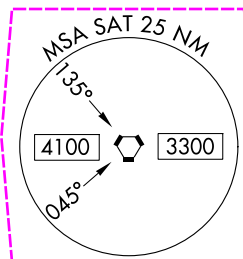
SAN ANTONIO DEP CON  
125.1 307.0 (Rwys 04/22/31)  
127.1 269.1 (Rwy 13)  
D-ATIS  
118.9  
CLNC DEL  
126.7  
CPDLC  
GND CON  
121.9 348.6  
SAN ANTONIO TOWER  
119.8 257.8

## TAKEOFF MINIMUMS

Rwys 4, 13L/R, 22, 31L/R: Standard.



NOTE: GOBBY Transition: Right turn at GOBBY NA for ACFT REQ FL240 and ABV.  
NOTE: HENLY Transition: Right turn at HENLY NA for ACFT REQ FL240 and ABV.



(CONTINUED ON FOLLOWING PAGE)

NOTE: Chart not to scale.

## ALAMO FOUR DEPARTURE

(ALAMO4.ALAMO) 31OCT24

SAN ANTONIO, TEXAS  
SAN ANTONIO INTL (SAT)

SC-3, 10 JUL 2025 to 07 AUG 2025

SC-3, 10 JUL 2025 to 07 AUG 2025

(ALAMO5.ALAMO) 25219

AL-369 (FAA)

SAN ANTONIO INTL (SAT)

SAN ANTONIO, TEXAS

## ALAMO FIVE DEPARTURE

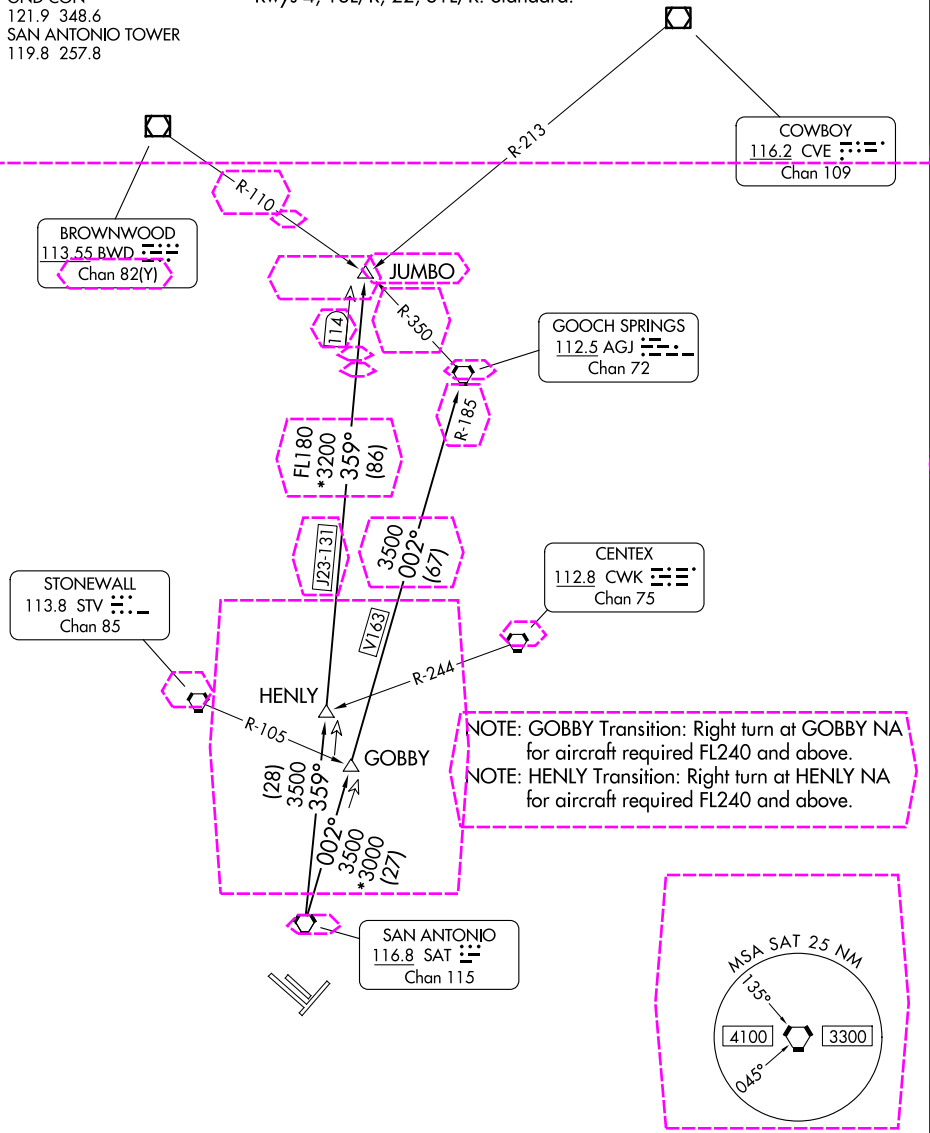
RADAR required.

**TOP ALTITUDE:  
5000**

SAN ANTONIO DEP CON  
125.1 307.0 (4, 22, 31)  
127.1 269.1 (13)  
D-ATIS  
118.9  
CLNC DEL  
126.7  
CPDLC  
GND CON  
121.9 348.6  
SAN ANTONIO TOWER  
119.8 257.8

## TAKEOFF MINIMUMS

Rwys 4, 13L/R, 22, 31L/R: Standard.



NOTE: Chart not to scale.

(CONTINUED ON FOLLOWING PAGE)

## ALAMO FIVE DEPARTURE

(ALAMO5.ALAMO) 07AUG25

SAN ANTONIO, TEXAS  
SAN ANTONIO INTL (SAT)