

WAAS CH 42843 W35A	APP CRS 344°	Rwy Idg 9272 TDZE 4227 Apt Elev 4231
--	------------------------	---

RNAV (GPS) Y RWY 35
SALT LAKE CITY INTL (SLC)

RNP APCH - GPS.

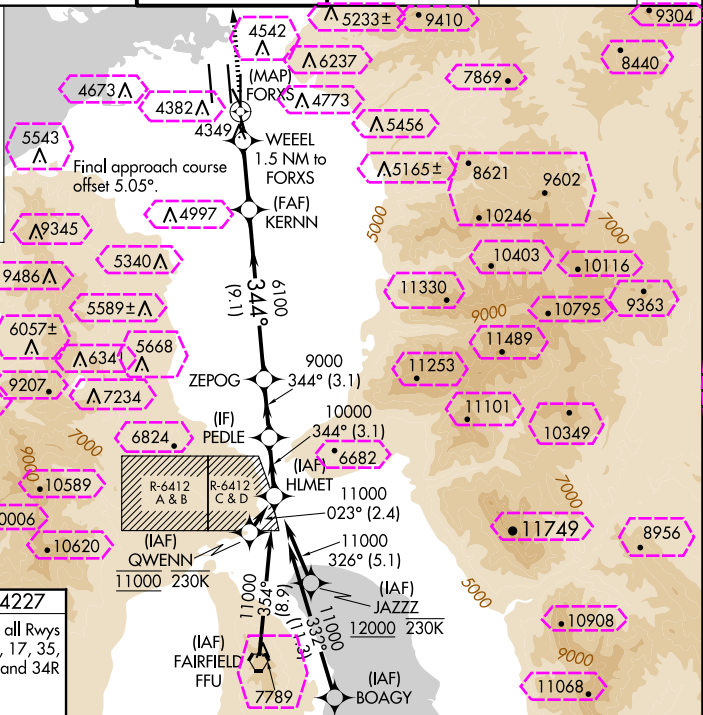
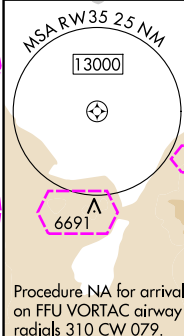
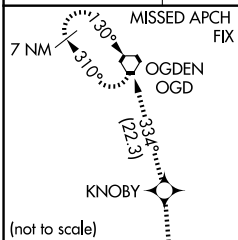
V Simultaneous approach authorized. LNAV procedure NA during simultaneous operations. For uncompensated Baro-VNAV systems, LNAV/VNAV NA below -23°C or above 49°C. Use of FD or AP required during simultaneous operations. For inop ALS, increase LPV Cat E visibility to RVR 4000, increase LNAV/VNAV all Cats visibility to RVR 4500, and increase LNAV Cats C/D/E visibility to RVR 5500.

MALSR



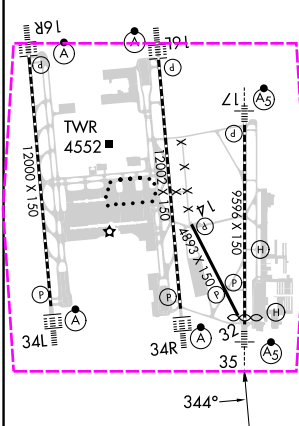
MISSED APPROACH: Climb to 9000 direct KNOBY and on track 334° to OGD VORTAC and hold.

D-ATIS 124.75 125.625	SALT LAKE CITY APP CON 125.7 284.6	SALT LAKE CITY TOWER 118.3 257.8	GND CON 121.9 348.6	CLNC DEL 127.3 379.975	CPDLC
--------------------------	---------------------------------------	-------------------------------------	------------------------	---------------------------	-------



ELEV 4231	D	TDZE 4227
-----------	----------	-----------

HIRL all Rwy's
TDZ/CL Rwy's 16L, 16R, 17, 35,
34L, and 34R



9000 ↑	KNOBY ✦	tr 334°	OGD ◻	VGSI and RNAV glidepath not coincident (VGSI Angle 3.00/TCH 74).				
				GP 3.00° TCH 55				
CATEGORY		A	B	C	D	E		
LPV DA	4478/24 251 (300-½)							
RNAV/ VNAV DA	4500/24 273 (300-½)				4507/24 280 (300-½)	4547/24 320 (400-½)		
RNAV MDA	4600/24 373 (400-½)			4600/40 373 (400-¾)				

SALT LAKE CITY INTL (SLC)
RNAV (GPS) Y RWY 35