

RNAV (GPS) Y RWY 34R

SW-4, 10 JUL 2025 to 07 AUG 2025

SALT LAKE CITY, UTAH

AL-365 (FAA)

25219

| | | |
|--|------------------------|--|
| WAAS CH 49230 W34A | APP CRS 344° | Rwy Ldg 12002 TDZE 4225 Apt Elev 4231 |
|--|------------------------|--|

RNAV (GPS) Y RWY 34R

SALT LAKE CITY INTL (SLC)

RNP APCH - GPS.

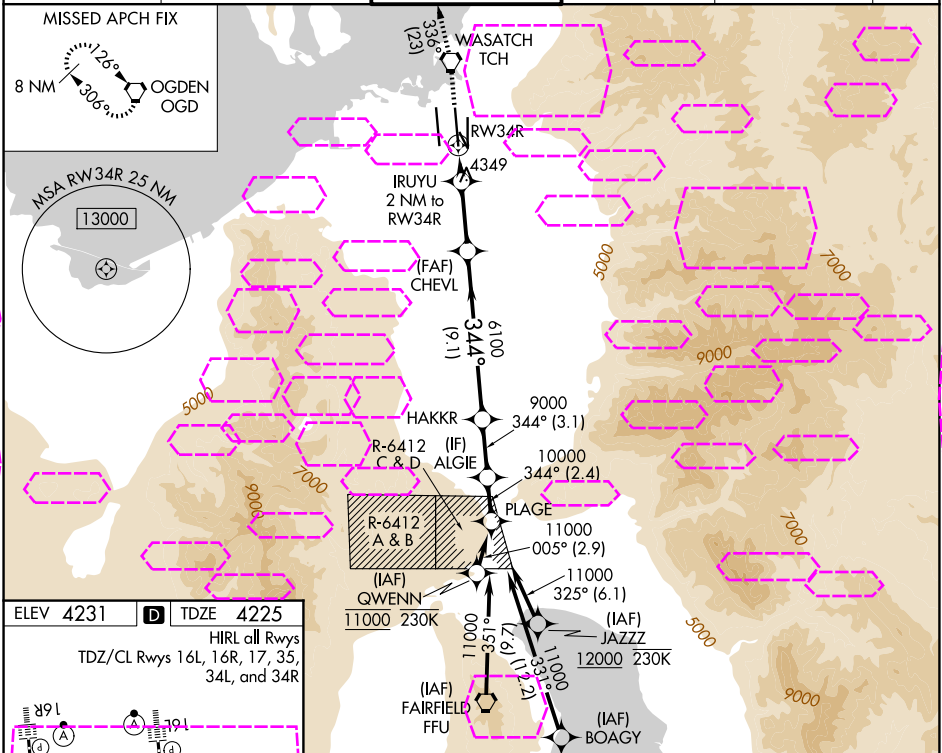
Simultaneous approach authorized. For uncompensated Baro-VNAV systems, LNAV/VNAV NA below -10°C or above 49°C. Use of FD or AP providing RNAV track guidance required during simultaneous operations. LNAV procedure NA during simultaneous operations. For inop ALS, increase LPV Cat E visibility to RVR 4000, LNAV/VNAV Cat E visibility to RVR 5000, LNAV Cots C/D visibility to RVR 5500, LNAV Cat E visibility to RVR 6000. Cat E restricted to USAF/USN aircraft.

ALSF-2

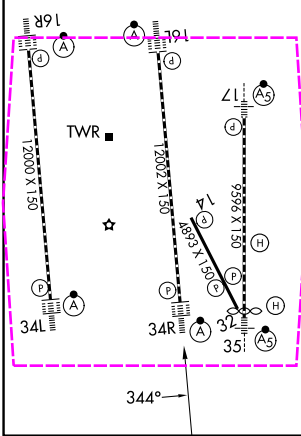


MISSED APPROACH: Climb to 9000 direct TCH VORTAC and on track 336° to OGD VORTAC and hold.

| | | | | | |
|---------------------------------|--|---|---------------------------------|----------------------------------|-------|
| D-ATIS 124.75 125.625 | SALT LAKE CITY APP CON 125.7 284.6 | SALT LAKE CITY TOWER 119.05 257.8 | GND CON 123.775 348.6 | CLNC DEL 127.3 379.975 | CPDLC |
|---------------------------------|--|---|---------------------------------|----------------------------------|-------|



| | | |
|--|---|-----------|
| ELEV 4231 | D | TDZE 4225 |
| HIRL all Rwys TDZ/CL Rwys 16L, 16R, 17, 35, 34L, and 34R | | |



| | | | | | |
|------|-----|---------|-----|--|-------|
| 9000 | TCH | ir 336° | OGD | VGSI and RNAV glidepath not coincident (VGSI Angle 3.00/TCH 73). | PLAGE |
| | | | | ALGIE | |
| | | | | HAKKR | |
| | | | | CHEVL | |
| | | | | IRUYU 2 NM to RW34R | |
| | | | | 1 NM to RW34R | |
| | | | | RW34R | |
| | | | | 4900 | |
| | | | | 6100 | |
| | | | | 344° | |
| | | | | 11000 | |
| | | | | 10000 | |
| | | | | 9000 | |
| | | | | 6100 | |
| | | | | 344° | |
| | | | | GP 3.00° | |
| | | | | TCH 55 | |
| | | | | 1 NM | |
| | | | | 1 NM | |
| | | | | 3.8 NM | |
| | | | | 9.1 NM | |
| | | | | 3.1 NM | |
| | | | | 2.4 NM | |
| | | | | A | |
| | | | | B | |
| | | | | C | |
| | | | | D | |
| | | | | E | |
| | | | | 4425/18 | |
| | | | | 200 (200-½) | |
| | | | | 4557/26 | |
| | | | | 332 (400-½) | |
| | | | | 4600/24 | |
| | | | | 375 (400-½) | |
| | | | | 4600/35 | |
| | | | | 375 (400-¾) | |
| | | | | 4640/40 | |
| | | | | 415 (500-¾) | |

SALT LAKE CITY, UTAH
Amdt 2 20FEB25

40°47'N-111°59'W

SALT LAKE CITY INTL (SLC)

RNAV (GPS) Y RWY 34R

SW-4, 07 AUG 2025 to 04 SEP 2025

SW-4, 07 AUG 2025 to 04 SEP 2025