

SALT LAKE CITY, UTAH

AL-365 (FAA)

25051

WAAS CH <b>70432</b> <b>W34B</b>	APP CRS <b>344°</b>	Rwy Idg <b>12000</b> TDZE <b>4229</b> Apt Elev <b>4231</b>
--	------------------------	--

# RNAV (GPS) Y RWY 34L

SALT LAKE CITY INTL (SLC)

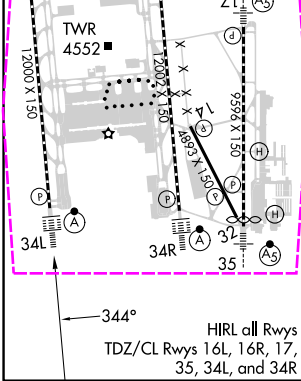
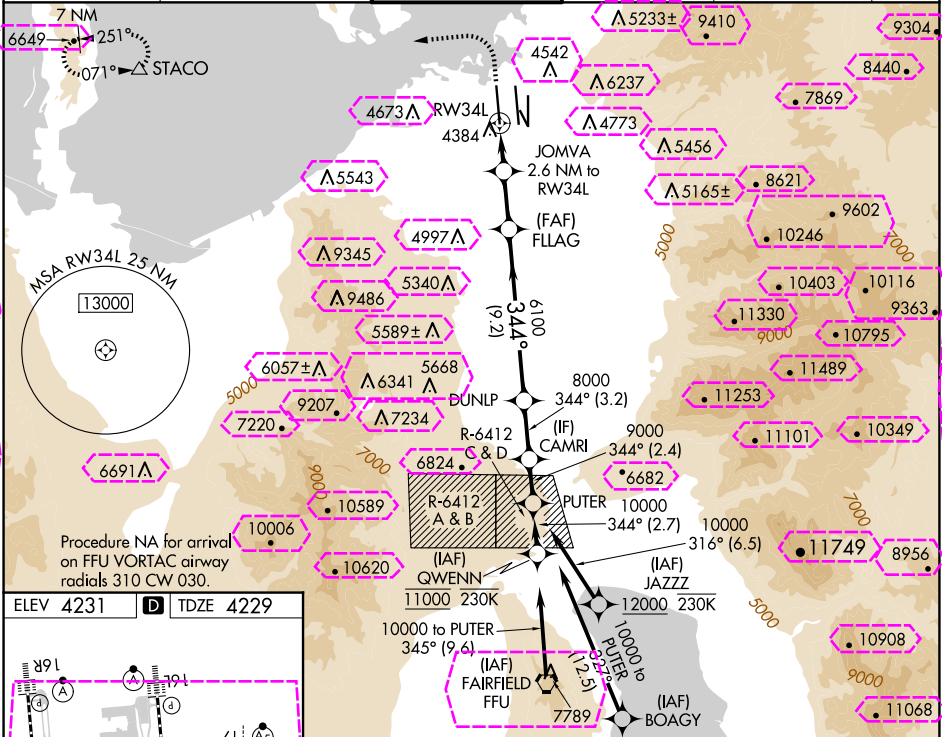
RNP APCH - GPS.




Simultaneous approach authorized. LNAV procedure NA during simultaneous operations. Use of FD or AP providing RNAV track guidance required during simultaneous operations. For uncompensated Baro-VNAV systems, LNAV/VNAV NA below -10°C or above 49°C. For inop ALS, increase LPV Cat E visibility to RVR 4000, LNAV/VNAV all Cats visibility to RVR 6000, LNAV Cat E visibility to 1 1/4 SM. Cat E restricted to USAF/USN aircraft.

ALSF-2

MISSED APPROACH: Climb to 4800 then climbing left turn to 8100 direct STACO and hold.

D-ATIS <b>124.75 125.625</b>	SALT LAKE CITY APP CON <b>125.7 284.6</b>	SALT LAKE CITY TOWER <b>132.65 336.4</b>	GND CON <b>123.775 348.6</b>	CLNC DEL <b>127.3 379.975</b>	CPDLC
---------------------------------	--	---	---------------------------------	----------------------------------	-------



4800	8100	STACO	VGSi and RNAV glidepath not coincident (VGSi Angle 3.00/TCH 73).			PUTER	
							
1.1 NM		1.5 NM		3.1 NM	9.2 NM	3.2 NM	2.4 NM
CATEGORY	A		B	C	D	E	
LPV DA			4429/18 200 (200-½)				
LNAV/VNAV DA			4640/40 411 (500-¾)				
LNAV MDA	4660/24 431 (500-½)		4660/40 431 (500-¾)				

SALT LAKE CITY, UTAH

40°47'N-111°59'W

SALT LAKE CITY INTL (SLC)

Amtd 2 20FEB25

# RNAV (GPS) Y RWY 34L

SW-4, 10 JUL 2025 to 07 AUG 2025

SW-4, 10 JUL 2025 to 07 AUG 2025

SALT LAKE CITY, UTAH

AL-365 (FAA)

25219

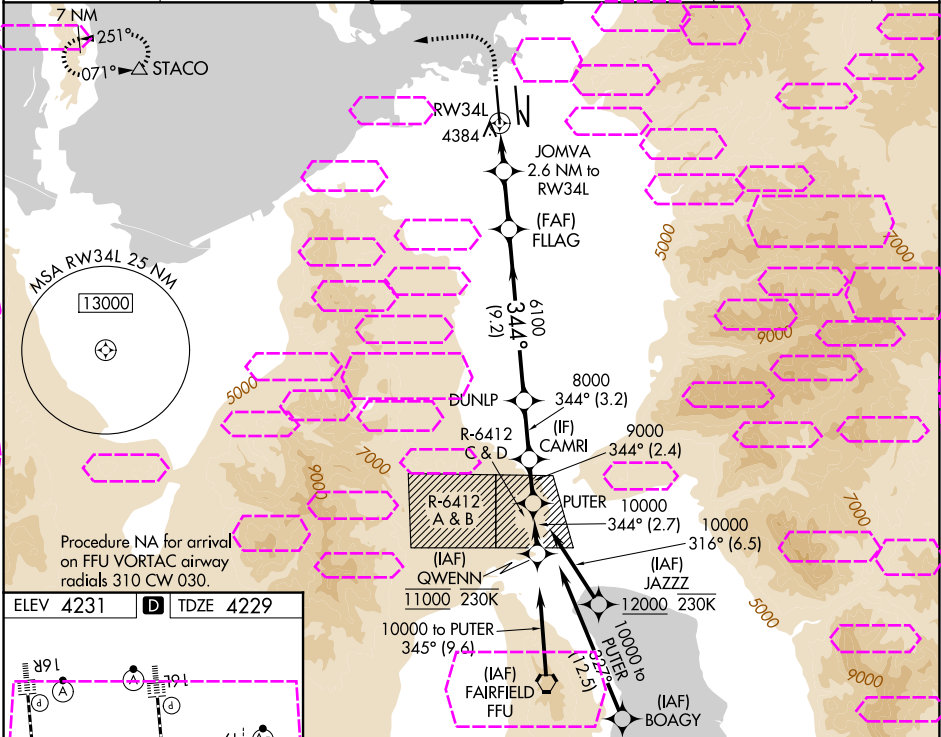
WAAS CH <b>70432</b> <b>W34B</b>	APP CRS <b>344°</b>	Rwy Ldg <b>12000</b> TDZE <b>4229</b> Apt Elev <b>4231</b>
--	------------------------	--

# RNAV (GPS) Y RWY 34L

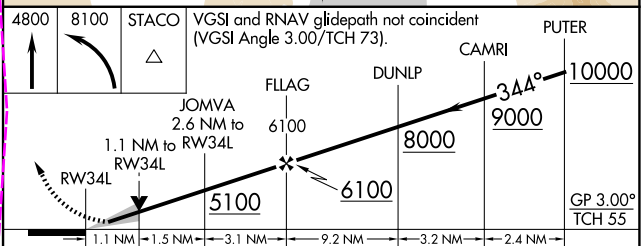
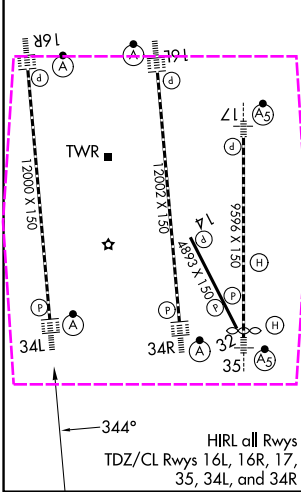
SALT LAKE CITY INTL (SLC)

RNP APCH - GPS. Simultaneous approach authorized. LNAV procedure NA during simultaneous operations. Use of FD or AP providing RNAV track guidance required during simultaneous operations. For uncompensated Baro-VNAV systems, LNAV/VNAV NA below -10°C or above 49°C. For inop ALS, increase LPV Cat E visibility to RVR 4000, LNAV/VNAV all Cats visibility to RVR 6000, LNAV Cat E visibility to 1¼ SM. Cat E restricted to USAF/USN aircraft.	ALSF-2 	MISSED APPROACH: Climb to 4800 then climbing left turn to 8100 direct STACO and hold.
---	------------	--

D-ATIS <b>124.75 125.625</b>	SALT LAKE CITY APP CON <b>125.7 284.6</b>	SALT LAKE CITY TOWER <b>132.65 336.4</b>	GND CON <b>123.775 348.6</b>	CLNC DEL <b>127.3 379.975</b>	CPDLC
---------------------------------	--	---	---------------------------------	----------------------------------	-------



ELEV 4231	<b>D</b>	TDZE 4229
-----------	----------	-----------



CATEGORY	A	B	C	D	E
LPV DA		4429/18	200 (200-½)		
LNAV/VNAV DA		4640/40	411 (500-¾)		
LNAV MDA	4660/24	431 (500-½)	4660/40	431 (500-¾)	

SALT LAKE CITY, UTAH

40°47'N-111°59'W

SALT LAKE CITY INTL (SLC)

Amtd 2 20FEB25

# RNAV (GPS) Y RWY 34L