

SALT LAKE CITY, UTAH


AL-365 (FAA)

25051

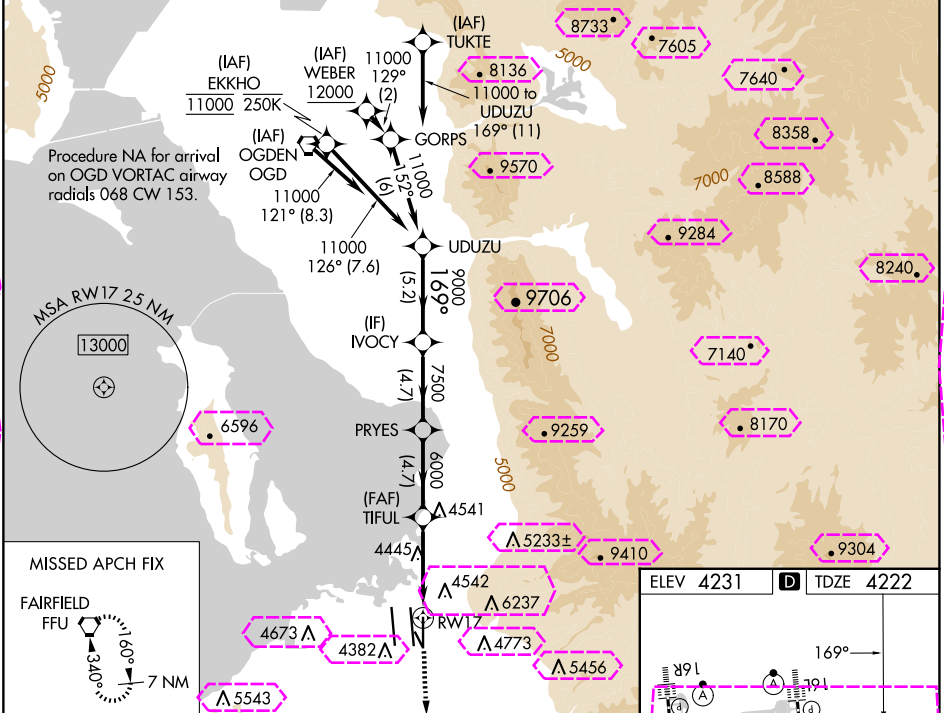
WAAS CH 82338 W17A	APP CRS 169°	Rwy Idg TDZE 4222 Apt Elev 4231
--	------------------------	---

RNAV (GPS) Y RWY 17

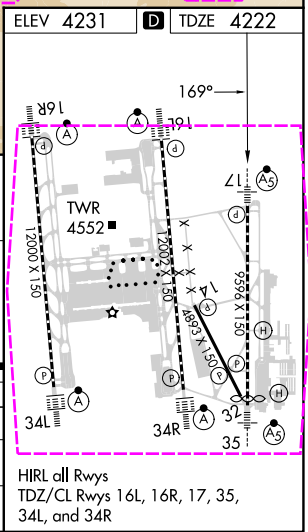
SALT LAKE CITY INTL (SLC)

RNP APCH - GPS. ▼ For uncompensated Baro-VNAV systems, LNAV/VNAV NA below -10°C or above 49°C. Simultaneous approach authorized. LNAV procedure NA during simultaneous operations. Use of FD or AP providing RNAV track guidance required during simultaneous operations. For inop ALS, increase LPV Cat E visibility to RVR 4000, LNAV/VNAV all Cats visibility to RVR 5500, and LNAV Cat C/D/E visibility to 1 3/8 SM.	MALSR 	MISSED APPROACH: Climb to 4700 then climb to 10000 direct FFU VORTAC and hold.
---	--	--

D-ATIS 124.75 125.625	SALT LAKE CITY APP CON 125.7 284.6	SALT LAKE CITY TOWER 118.3 257.8	GND CON 121.9 348.6	CLNC DEL 127.3 379.975	CPDLC
---------------------------------	--	--	-------------------------------	----------------------------------	-------



UDUZU		VGSI and RNAV glidepath not coincident (VGSI Angle 3.00/TCH 73).			4700	10000	FFU
11000		IVOCY	PRYES	TIFUL	6000	1.3 NM to RW17	RW17
GP 3.00° TCH 55		9000	7500	6000	6000		
		5.2 NM	4.7 NM	4.7 NM	4.1 NM	1.3	
CATEGORY	A	B	C	D	E		
LPV DA	4422/18 200 (200-½)						
LNAV/ VNAV	DA	4571/30 349 (400-⅝)					4574/30 352 (400-⅝)
LNAV MDA	4700/24	478 (500-½)	4700/50 478 (500-1)				



SALT LAKE CITY, UTAH
Amdt 3 20FEB25

40°47'N-111°59'W

RNAV (GPS) Y RWY 17

SW-4, 10 JUL 2025 to 07 AUG 2025

SW-4, 10 JUL 2025 to 07 AUG 2025

SALT LAKE CITY, UTAH


AL-365 (FAA)

25219

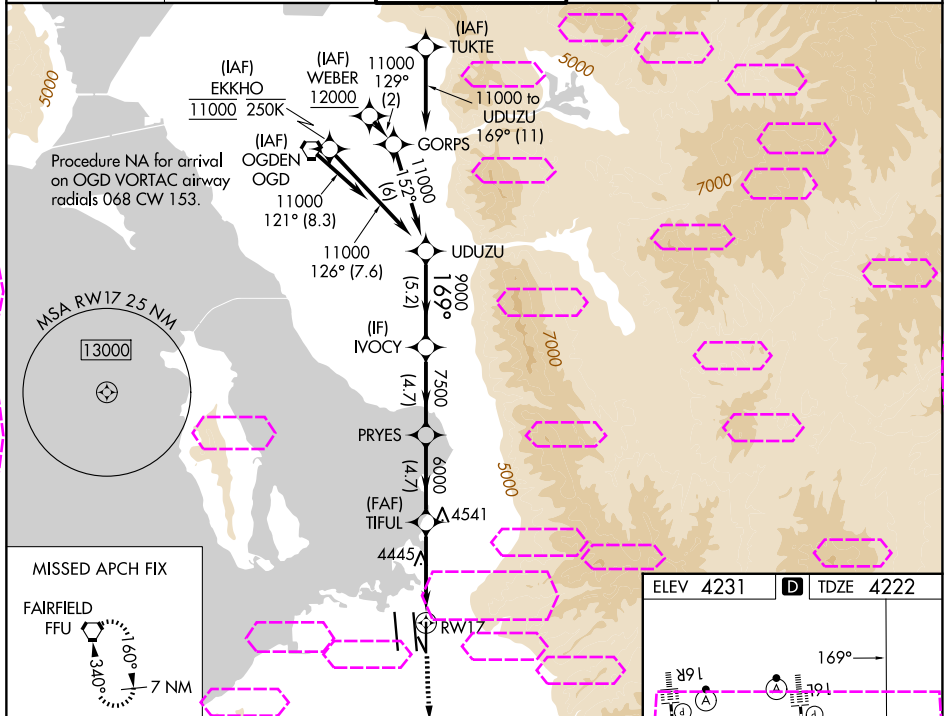
WAAS CH 82338 W17A	APP CRS 169°	Rwy Ldg TDZE 4222 Apt Elev 4231
--	------------------------	---

RNAV (GPS) Y RWY 17

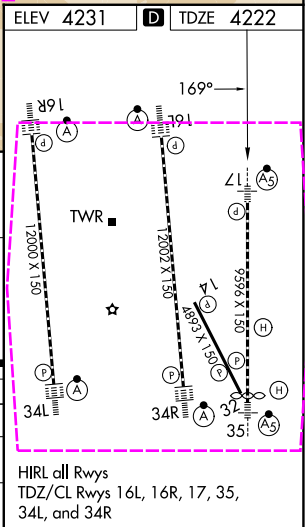
SALT LAKE CITY INTL (SLC)

RNP APCH - GPS. ▼ For uncompensated Baro-VNAV systems, LNAV/VNAV NA below -10°C or above 49°C. Simultaneous approach authorized. LNAV procedure NA during simultaneous operations. Use of FD or AP providing RNAV track guidance required during simultaneous operations. For inop ALS, increase LPV Cat E visibility to RVR 4000, LNAV/VNAV all Cats visibility to RVR 5500, and LNAV Cat C/D/E visibility to 1 3/8 SM.	MALSR 	MISSED APPROACH: Climb to 4700 then climb to 10000 direct FFU VORTAC and hold.
---	--	--

D-ATIS 124.75 125.625	SALT LAKE CITY APP CON 125.7 284.6	SALT LAKE CITY TOWER 118.3 257.8	GND CON 121.9 348.6	CLNC DEL 127.3 379.975	CPDLC
---------------------------------	--	--	-------------------------------	----------------------------------	-------



UDUZU		VGSI and RNAV glidepath not coincident (VGSI Angle 3.00/TCH 73).			4700	10000	FFU
11000	769°	IVOCY	PRYES	TIFUL	6000	1.3 NM to RW17	RW17
GP 3.00° TCH 55	9000	7500	6000	6000	6000	6000	6000
5.2 NM		4.7 NM		4.7 NM		4.1 NM	
1.3							
CATEGORY	A	B	C	D	E		
LPV DA	4422/18 200 (200-½)						
LNAV/ VNAV DA	4571/30 349 (400-⅝)						4574/30 352 (400-⅝)
LNAV MDA	4700/24 478 (500-½)		4700/50 478 (500-1)				



SALT LAKE CITY, UTAH
Amdt 3 20FEB25

40°47'N-111°59'W

RNAV (GPS) Y RWY 17

SW-4, 07 AUG 2025 to 04 SEP 2025

SW-4, 07 AUG 2025 to 04 SEP 2025