

|  |                        |  |
|--|------------------------|--|
| WAAS<br>CH <b>42746</b><br><b>W16A</b> | APP CRS<br><b>164°</b> | Rwy Idg <b>12000</b><br>TDZE <b>4226</b><br>Apt Elev <b>4231</b> |
|--|------------------------|--|

RNAV (GPS) Y RWY 16R  
SALT LAKE CITY INTL (SLC)

RNP APCH - GPS.

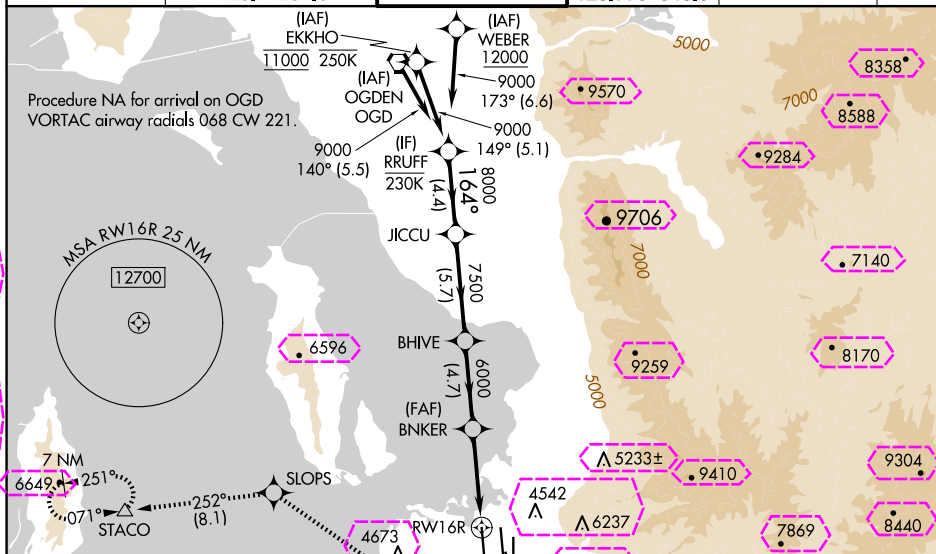
**T** Simultaneous approach authorized. LNAV procedure NA during simultaneous operations. Use of FD or AP required during simultaneous operations. For uncompensated Baro-VNAV systems, LNAV/VNAV NA below -10°C or above 50°C. For inop ALS, increase LPV\* Cat E visibility to RVR 4000, increase LPV Cat E visibility to RVR 4500, increase LNAV/VNAV Cat E visibility to RVR 6000, increase LNAV# Cat E visibility to 1½ SM, increase LNAV Cats C/D visibility to 1¾ SM, and increase LNAV Cat E visibility to 2½ SM. Cat E restricted to USAF/USN aircraft.

ALSF-2

**MISSED APPROACH:** Climb to 4700 then climbing right turn to 8900 direct SLOPS and on track 252° to STACO and hold, continue climb-in-hold.

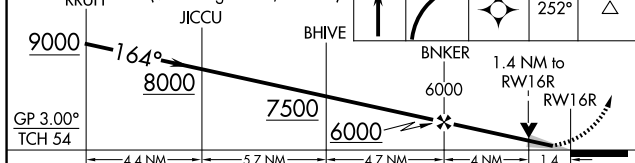
- \*Missed approach requires minimum climb of 225 feet per NM to 6400 for Cat E aircraft.
- \*Missed approach requires minimum climb of 210 feet per NM to 6200 for Cat E aircraft.

|                |                        |                      |               |               |       |
|----------------|------------------------|----------------------|---------------|---------------|-------|
| D-ATIS         | SALT LAKE CITY APP CON | SALT LAKE CITY TOWER | GND CON       | CLNC DEL      | CPDLC |
| 124.75 125.625 | 125.7 284.6            | 132.65 336.4         | 123.775 348.6 | 127.3 379.975 |       |



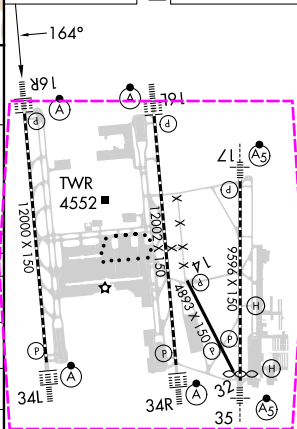
VGSI and RNAV glidepath not coincident  
PPI IE (VGSI Angle 3.00/TCH 73).

|      |      |       |    |       |
|------|------|-------|----|-------|
| 4700 | 8900 | SLOPS | tr | STACC |
|------|------|-------|----|-------|



| CATEGORY         | A                   | B | C                   | D | E                        |
|------------------|---------------------|---|---------------------|---|--------------------------|
| LPV DA*          | NA                  |   |                     |   | 4426/18<br>200 (200-½)   |
| LPV DA           | 4426/18 200 (200-½) |   |                     |   | 4489/20<br>263 (300-½)   |
| LNAV/<br>VNAV DA | 4620/35 394 (400-⅝) |   |                     |   |                          |
| LNAV MDA#        | NA                  |   |                     |   | 4740/55<br>514 (600-1)   |
| LNAV MDA         | 4740/24 514 (600-½) |   | 4740/55 514 (600-1) |   | 5000-134<br>774 (800-1¾) |

|           |          |           |
|-----------|----------|-----------|
| ELEV 4231 | <b>D</b> | TDZE 4226 |
|-----------|----------|-----------|



SALT LAKE CITY, UTAH

Amdt 3 20FEB25

40°47'N-111°59'W

SALT LAKE CITY INTL (SLC)

RNAV (GPS) Y RWY 16R

SW-4, 10 JUL 2025 to 07 AUG 2025

SALT LAKE CITY, UTAH

AL-365 (FAA)

25219

|  |                        |   |
|--|------------------------|---|
| WAAS<br>CH <b>42746</b><br><b>W16A</b> | APP CRS<br><b>164°</b> | Rwy Ldg<br>TDZE <b>4226</b><br>Apt Elev <b>4231</b> |
|--|------------------------|---|

# RNAV (GPS) Y RWY 16R

SALT LAKE CITY INTL (SLC)

RNP APCH - GPS.

Simultaneous approach authorized. LNAV procedure NA during simultaneous operations. Use of FD or AP required during simultaneous operations. For uncompensated Baro-VNAV systems, LNAV/VNAV NA below -10°C or above 50°C. For inop ALS, increase LPV\* Cat E visibility to RVR 4000, increase LPV Cat E visibility to RVR 4500, increase LNAV/VNAV Cat E visibility to RVR 6000, increase LNAV# Cat E visibility to 1 3/8 SM, increase LNAV Cats C/D visibility to 1 3/8 SM, and increase LNAV Cat E visibility to 2 1/2 SM. Cat E restricted to USAF/USN aircraft.

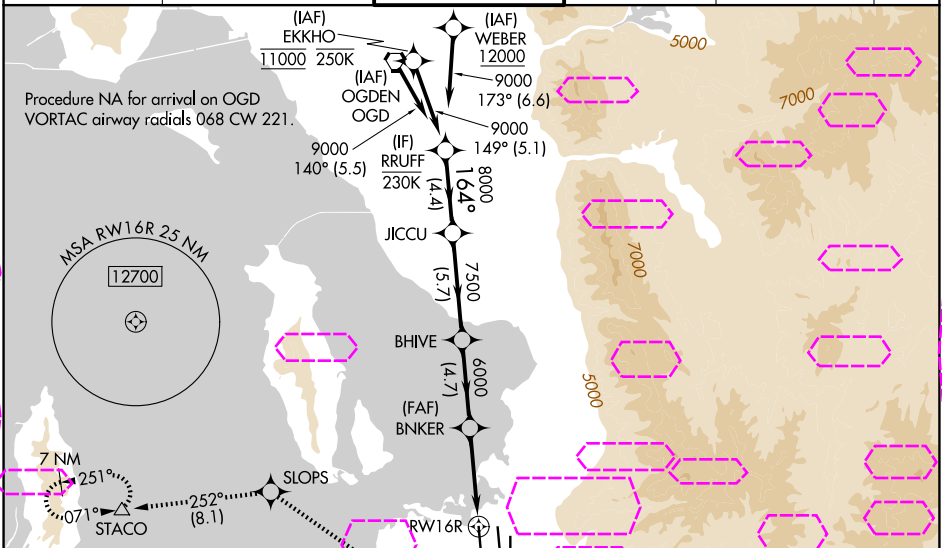
ALSF-2

MISSED APPROACH: Climb to 4700 then climbing right turn to 8900 direct SLOPS and on track 252° to STACO and hold, continue climb-in-hold.

\*Missed approach requires minimum climb of 225 feet per NM to 6400 for Cat E aircraft.

#Missed approach requires minimum climb of 210 feet per NM to 6200 for Cat E aircraft.

|                                 |  |   |                                 |                                  |       |
|---------------------------------|--|---|---------------------------------|----------------------------------|-------|
| D-ATIS<br><b>124.75 125.625</b> | SALT LAKE CITY APP CON<br><b>125.7 284.6</b> | SALT LAKE CITY TOWER<br><b>132.65 336.4</b> | GND CON<br><b>123.775 348.6</b> | CLNC DEL<br><b>127.3 379.975</b> | CPDLC |
|---------------------------------|--|---|---------------------------------|----------------------------------|-------|



|  |                       |                     |       |            |       |                 |               |
|--|-----------------------|---------------------|-------|------------|-------|-----------------|---------------|
| VGSI and RNAV glidepath not coincident (VGSI Angle 3.00/TCH 73). |                       | RRUFF               | JICCU | BHIVE      | BNKER | SLOPS           | STACO         |
| GP 3.00°<br>TCH 54   |                       | 9000                | 8000  | 7500       | 6000  | 4700            | 8900          |
| 4.4 NM   |                       | 5.7 NM              |       | 4.7 NM     |       | 4 NM            |               |
| CATEGORY   | A                     | B                   | C     | D          | E     |                 |               |
| LPV DA*  | NA                    |                     |       |            |       | 4426/18         | 200 (200-1/2) |
| LPV DA   | 4426/18 200 (200-1/2) |                     |       |            |       | 4489/20         | 263 (300-1/2) |
| LNAV/VNAV DA   | 4620/35 394 (400-3/4) |                     |       |            |       |                 |               |
| LNAV MDA#  | NA                    |                     |       |            |       | 4740/55         | 514 (600-1)   |
| LNAV MDA   | 4740/24 514 (600-1/2) | 4740/55 514 (600-1) |       | 5000-1 3/4 |       | 774 (800-1 3/4) |               |

ELEV 4231 D TDZE 4226

164°

TWR

34L 34R 35L 35R

HIRL all Rwys

TDZ/CL Rwys 16L, 16R, 17, 35, 34L, and 34R

SALT LAKE CITY, UTAH

Amtd 3 20FEB25

40°47'N-111°59'W

SALT LAKE CITY INTL (SLC)

# RNAV (GPS) Y RWY 16R