

SALT LAKE CITY, UTAH

AL-365 (FAA)

25051

WAAS CH 70546 W16B	APP CRS 164°	Rwy Idg 12002 TDZE 4231 Apt Elev 4231
--	------------------------	--

RNAV (GPS) Y RWY 16L

SALT LAKE CITY INTL (SLC)

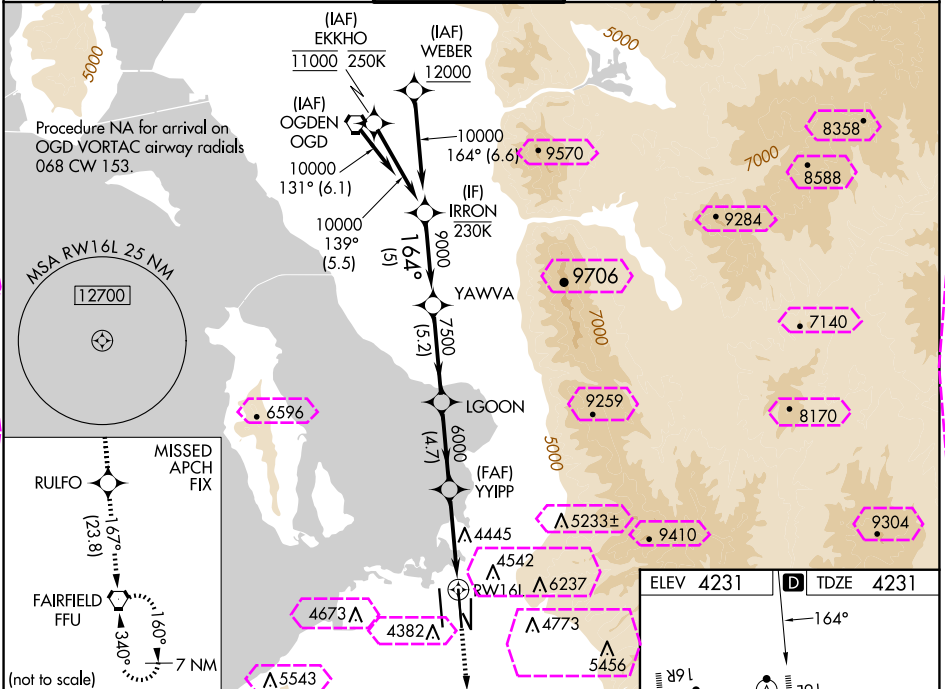
RNP APCH - GPS.

▼ LNAV procedure NA during simultaneous operations. Simultaneous approach authorized. Use of FD or AP required during simultaneous operations. For uncompensated Baro-VNAV systems, LNAV/VNAV NA below -10°C or above 49°C. For inop ALS, increase LPV Cat E visibility to RVR 4000, increase LNAV/VNAV Cat A visibility to RVR 4500, increase Cats C/D visibility to RVR 5500, increase Cat E visibility to 6000, and increase LNAV Cat E visibility to 1½ SM.

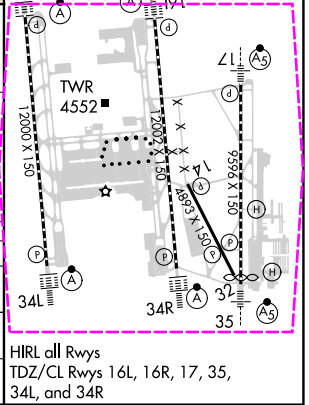
ALS-F-2

MISSED APPROACH:
Climb to 10000 direct RULFO and on track 167° to FFU VORTAC and hold.

D-ATIS 124.75 125.625	SALT LAKE CITY APP CON 125.7 284.6	SALT LAKE CITY TOWER 119.05 257.8	GND CON 123.775 348.6	CLNC DEL 127.3 379.975	CPDLC
---------------------------------	--	---	---------------------------------	----------------------------------	-------



VGSI and RNAV glidepath not coincident (VGSI Angle 3.00/TCH 70).					
IRRON	YAWVA	LGOON	YYIPP	RULFO	FFU
10000	9000	7500	6000	1.4 NM to RWY 16L	
GP 3.00° TCH 55					
5 NM	5.2 NM	4.7 NM	4 NM	1.4	
CATEGORY	A	B	C	D	E
LPV DA	4431/18 200 (200-½)				
LNAV/VNAV DA	4537/24 306 (400-½)	4559/26 328 (400-½)	4574/30 343 (400-¾)	4593/35 362 (400-¾)	4634/40 403 (500-¾)
LNAV MDA	4760/24 529 (600-½)	4760/55 529 (600-1)			



SALT LAKE CITY, UTAH

Amtd 3 20FEB25

40°47'N-111°59'W

SALT LAKE CITY INTL (SLC)

RNAV (GPS) Y RWY 16L

SALT LAKE CITY, UTAH

AL-365 (FAA)

25219

WAAS CH 70546 W16B	APP CRS 164°	Rwy Ldg 12002 TDZE 4231 Apt Elev 4231
--	------------------------	--

RNAV (GPS) Y RWY 16L

SALT LAKE CITY INTL (SLC)

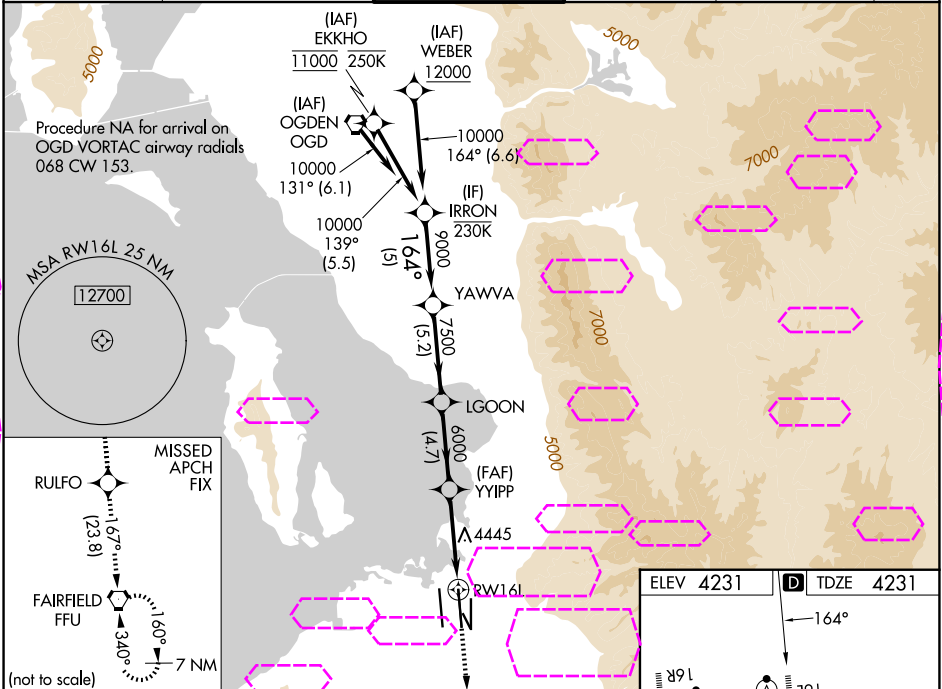
RNP APCH - GPS.

▼ LNAV procedure NA during simultaneous operations. Simultaneous approach authorized. Use of FD or AP required during simultaneous operations. For uncompensated Baro-VNAV systems, LNAV/VNAV NA below -10°C or above 49°C. For inop ALS, increase LPV Cat E visibility to RVR 4000, increase LNAV/VNAV Cat A visibility to RVR 4500, increase Cats C/D visibility to RVR 5500, increase Cat E visibility to 6000, and increase LNAV Cat E visibility to 1 1/2 SM.

ALSF-2

MISSED APPROACH: Climb to 10000 direct RULFO and on track 167° to FFU VORTAC and hold.

D-ATIS 124.75 125.625	SALT LAKE CITY APP CON 125.7 284.6	SALT LAKE CITY TOWER 119.05 257.8	GND CON 123.775 348.6	CLNC DEL 127.3 379.975	CPDLC
---------------------------------	--	---	---------------------------------	----------------------------------	-------



VGSI and RNAV glidepath not coincident (VGSI Angle 3.00/TCH 70).					
IRRON	YAWVA	LGOON	YYIPP	RULFO	FFU
10000	9000	7500	6000	1.4 NM to RW16L	
GP 3.00° TCH 55					
5 NM 5.2 NM 4.7 NM 4 NM 1.4					
CATEGORY	A	B	C	D	E
LPV DA	4431/18 200 (200-1/2)				
LNAV/VNAV DA	4537/24 306 (400-1/2)	4559/26 328 (400-1/2)	4574/30 343 (400-3/4)	4593/35 362 (400-3/4)	4634/40 403 (500-3/4)
LNAV MDA	4760/24 529 (600-1/2)	4760/55 529 (600-1)			

