

SALT LAKE CITY, UTAH

AL-365 (FAA)

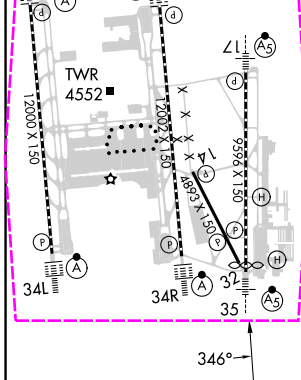
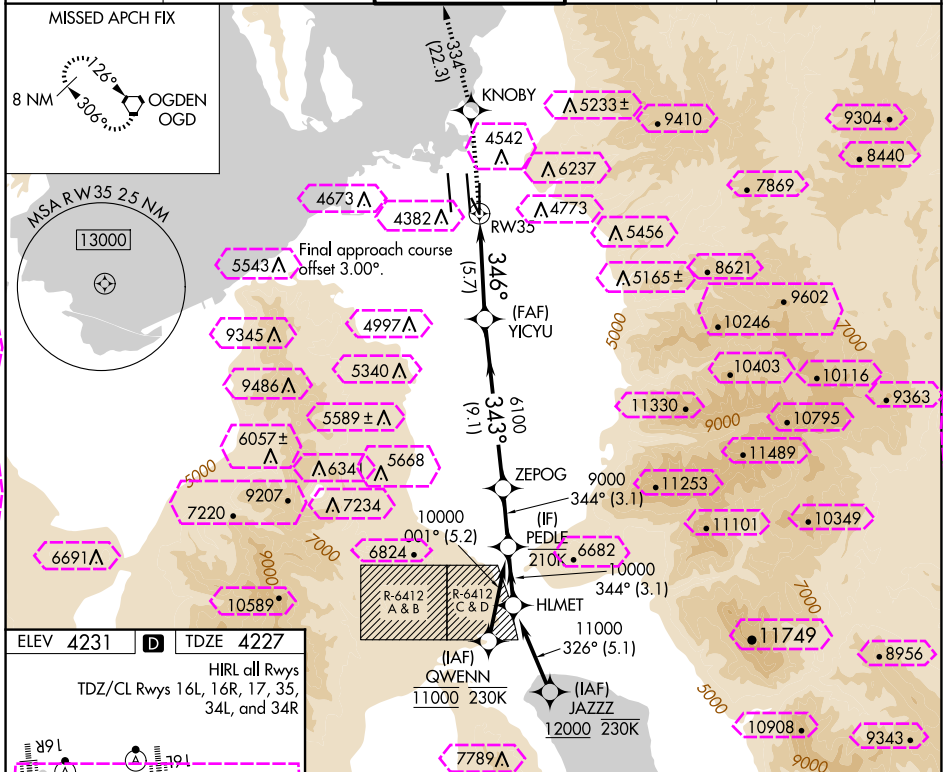
25051

APP CRS	Rwy Idg	9272
346°	TDZE	4227
	Apt Elev	4231

# RNAV (RNP) Z RWY 35

SALT LAKE CITY INTL (SLC)

RNP AR APCH - GPS.		MALSR	MISSED APPROACH: Climb to 9000 direct KNOBY and on track 334° to OGD VORTAC and hold.		
▼ For uncompensated Baro-VNAV systems, procedure NA below -10°C or above 54°C. For inop ALS, increase RNP 0.20 all Cats visibility to RVR 4500.					
D-ATIS	SALT LAKE CITY APP CON	SALT LAKE CITY TOWER	GND CON	CLNC DEL	CPDLC
124.75 125.625	125.7 284.6	118.3 257.8	121.9 348.6	127.3 379.975	



9000	KNoby	tr 334°	OGD	VGSI and RNAV glidepath not coincident (VGSI Angle 3.00/TCH 74).		HLMET
				ZEPOG	PEDLE	
				344°	344°	11000
				343°	343°	10000
				6100		
				5.7 NM	9.1 NM	3.1 NM
						3.1 NM
CATEGORY	A	B	C	D	E	
RNP 0.20 DA		4502/24	275 (300-½)			
RNP 0.30 DA		4625/35	398 (400-¾)			
GP 3.00° TCH 55						

AUTHORIZATION REQUIRED

SALT LAKE CITY, UTAH  
Orig 20FEB25

40°47'N-111°59'W

SALT LAKE CITY INTL (SLC)  
RNAV (RNP) Z RWY 35

SW-4, 10 JUL 2025 to 07 AUG 2025

SALT LAKE CITY INTL (SLC)  
RNAV (RNP) Z RWY 35

SW-4, 07 AUG 2025 to 04 SEP 2025