

SALT LAKE CITY, UTAH

AL-365 (FAA)

25051

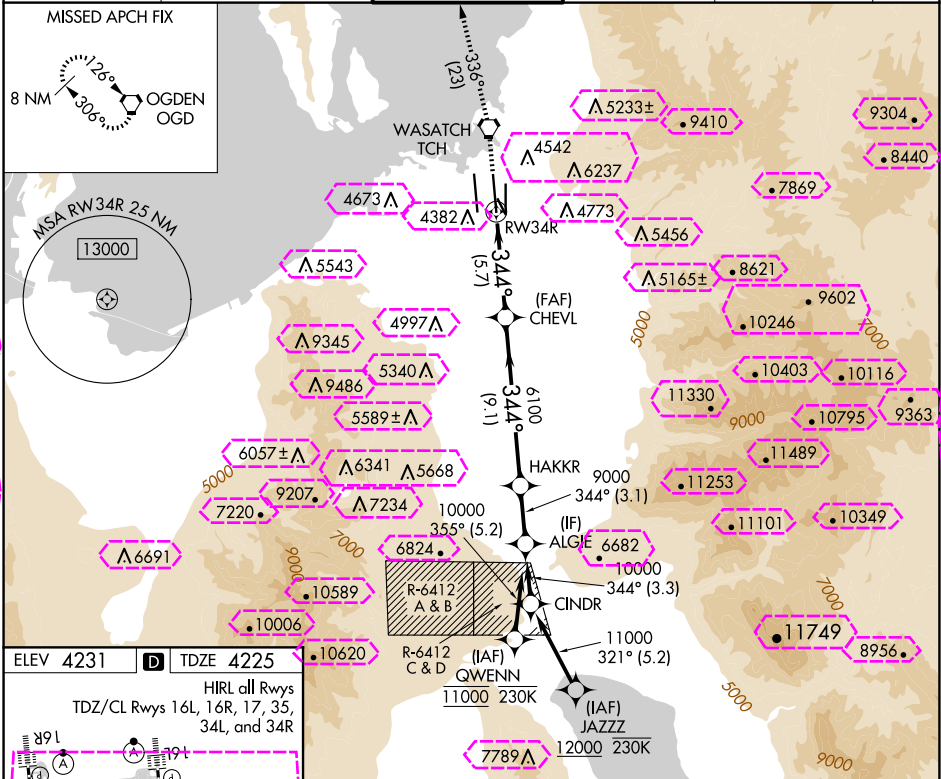
APP CRS 344°	Rwy Idg 12002
	TDZE 4225
	Apt Elev 4231

RNAV (RNP) Z RWY 34R

SALT LAKE CITY INTL (SLC)

RNP AR APCH - GPS. Authorization required.	ALSF-2	MISSED APPROACH: Climb to 9000 direct TCH VORTAC and on track 336° to OGD VORTAC and hold.
For uncompensated Baro-VNAV systems, procedure NA below -10°C or above 54°C. Simultaneous approach authorized.		

D-ATIS 124.75 125.625	SALT LAKE CITY APP CON 125.7 284.6	SALT LAKE CITY TOWER 119.05 257.8	GND CON 123.775 348.6	CLNC DEL 127.3 379.975	CPDLC
---------------------------------	--	---	---------------------------------	----------------------------------	-------



ELEV 4231	TDZE 4225	HIRL all Rwys TDZ/CL Rwys 16L, 16R, 17, 35, 34L, and 34R	9000 TCH	tr 336°	OGD	VGSI and RNAV glidepath not coincident (VGSI Angle 3.00/TCH 73).	ALGIE
							GP 3.00° TCH 55
			CATEGORY				
			RNP 0.10 DA				4546/26 321 (400-1/2)
			RNP 0.30 DA				4609/35 384 (400-3/4)
AUTHORIZATION REQUIRED							

SALT LAKE CITY, UTAH
Orig 20FEB25

40°47'N-111°59'W

SALT LAKE CITY INTL (SLC)

RNAV (RNP) Z RWY 34R

