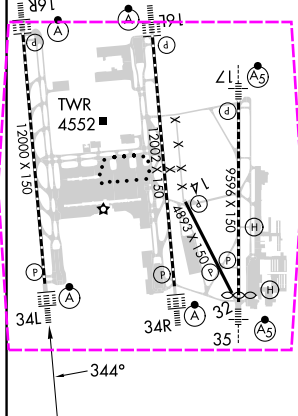
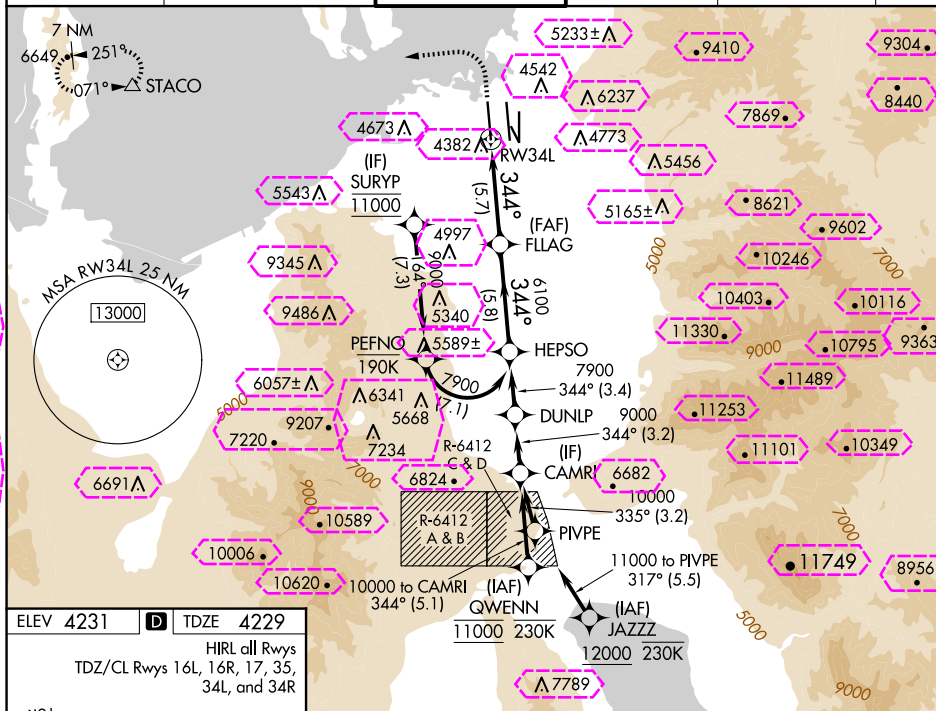


RNAV (RNP) Z RWY 34L
SALT LAKE CITY INTL (SLC)

*Missed approach requires minimum climb of 250 feet per NM to 4700.

D-ATIS	SALT LAKE CITY APP CON	SALT LAKE CITY TOWER	GND CON	CLNC DEL	CPDLC
124.75 125.625	125.7 284.6	132.65 336.4	123.775 348.6	127.3 379.975	



VGSI and RNAV glidepath not coincident (VGSI Angle 3.00/TCH 73).

See planview for multiple IF locations.

HEPSO

7900

FLAG

6100

344°

6100

5.7 NM

5.8 NM

GP 3.00°
TCH 55

RW34L

CATEGORY	A	B	C	D
RNP 0.10 DA*	4490/24	261 (300-½)		
RNP 0.20 DA	4530/24	301 (300-½)		
RNP 0.30 DA	4643/40	414 (500-¾)		

AUTHORIZATION REQUIRED

SALT LAKE CITY, UTAH

AL-365 (FAA)

25219

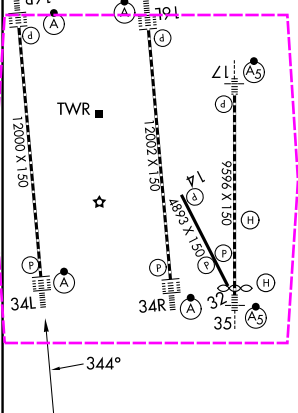
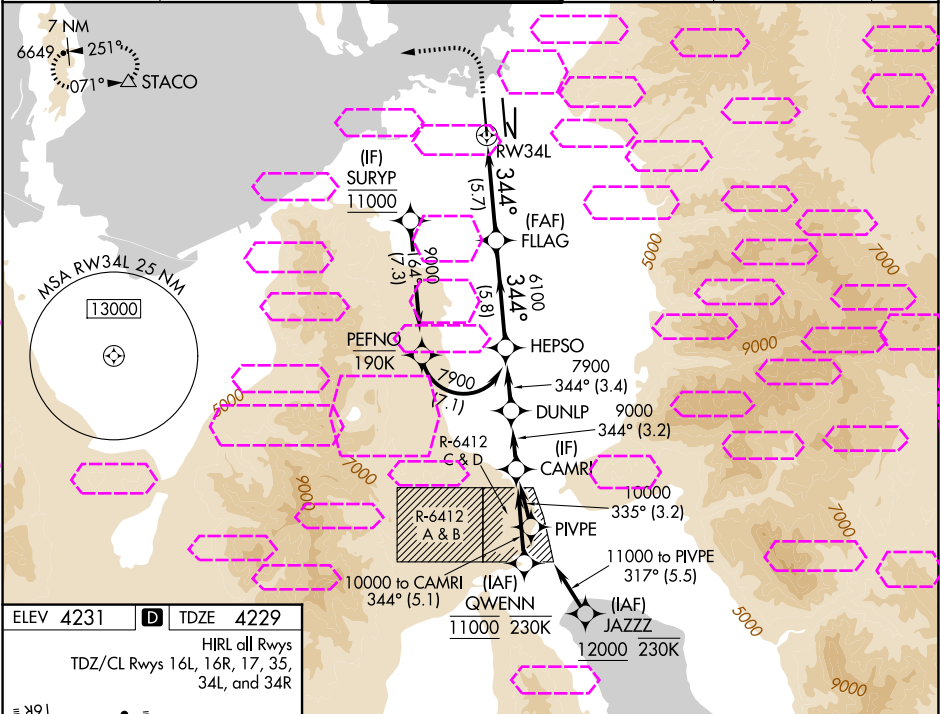
APP CRS	Rwy Ldg	12000
344°	TDZE	4229
	Apt Elev	4231

RNAV (RNP) Z RWY 34L

SALT LAKE CITY INTL (SLC)

RNP AR APCH - GPS. Authorization required. From PEFNO: RF.	ALSF-2	MISSED APPROACH: Climb to 4800 then climbing left turn to 8100 direct STACO and hold.
▼ For uncompensated Baro-VNAV systems, procedure NA below -10°C or above 54°C. Simultaneous approach authorized. For inop ALS, increase RNP 0.10, RNP 0.20 visibility all Cats to RVR 4500, RNP 0.30 visibility all Cats to RVR 6000.		*Missed approach requires minimum climb of 250 feet per NM to 4700.

D-ATIS	SALT LAKE CITY APP CON	SALT LAKE CITY TOWER	GND CON	CLNC DEL	CPDLC
124.75 125.625	125.7 284.6	132.65 336.4	123.775 348.6	127.3 379.975	



4800	8100	STACO	VGSI and RNAV glidepath not coincident (VGSI Angle 3.00/TCH 73).	
See planview for multiple IF locations.				
CATEGORY	A	B	C	D
RNP 0.10 DA*	4490/24 261 (300-½)			
RNP 0.20 DA	4530/24 301 (300-½)			
RNP 0.30 DA	4643/40 414 (500-¾)			
AUTHORIZATION REQUIRED				

SALT LAKE CITY, UTAH
Orig 20FEB25

40°47'N-111°59'W

SALT LAKE CITY INTL (SLC)

RNAV (RNP) Z RWY 34L

SW-4, 07 AUG 2025 to 04 SEP 2025

SW-4, 07 AUG 2025 to 04 SEP 2025