

SALT LAKE CITY, UTAH

AL-365 (FAA)

25051

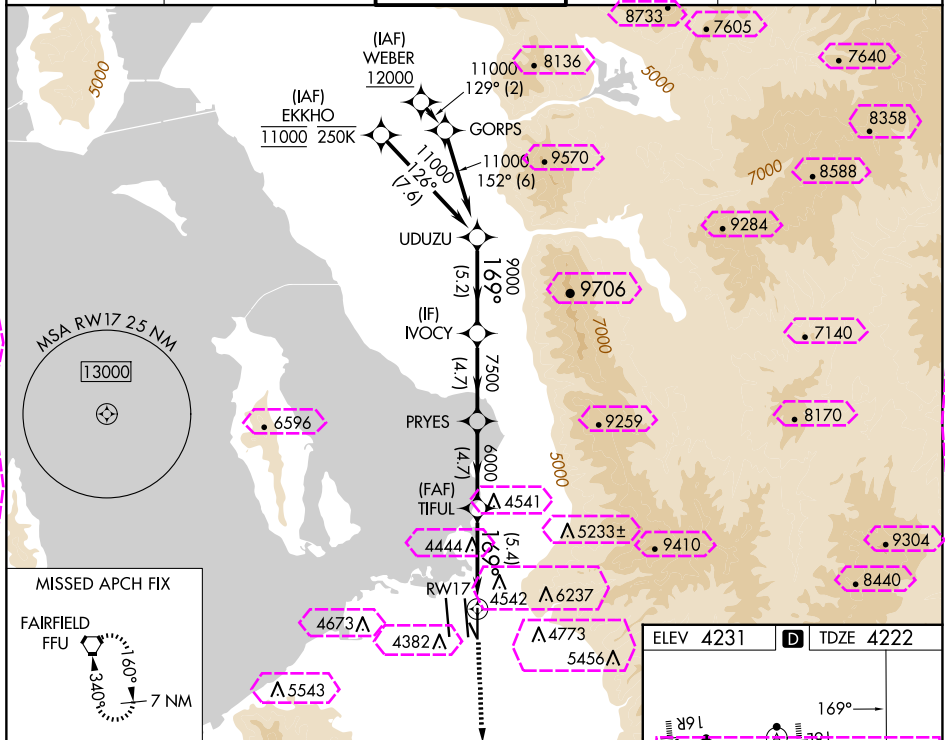
APP CRS	Rwy Idg	9596
169°	TDZE	4222
	Apt Elev	4231

RNAV (RNP) Z RWY 17

SALT LAKE CITY INTL (SLC)

RNP AR APCH - GPS.	MALSR	MISSED APPROACH: Climb to 4700 then climb to 10000 direct FFU VORTAC and hold.
For uncompensated Baro-VNAV systems, procedure NA below -10°C or above 54°C. Simultaneous approach authorized. For inop ALS, increase RNP 0.20 all Cats visibility to RVR 4000 and RNP 0.30 all Cats visibility to RVR 5500.		

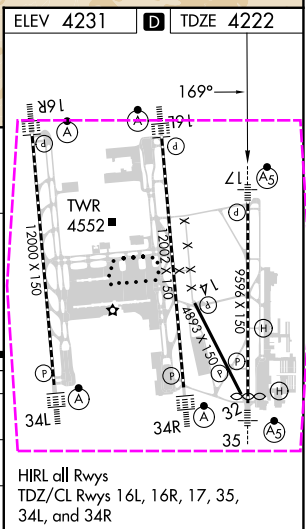
D-ATIS	SALT LAKE CITY APP CON	SALT LAKE CITY TOWER	GND CON	CLNC DEL	CPDLC
124.75 125.625	125.7 284.6	118.3 257.8	121.9 348.6	127.3 379.975	



SW-4, 10 JUL 2025 to 07 AUG 2025

SW-4, 10 JUL 2025 to 07 AUG 2025

UDUZY	VGSI and RNAV glidepath not coincident (VGSI Angle 3.00/TCH 73).	4700	10000	FFU
GP 3.00° TCH 55				
CATEGORY	A	B	C	D
RNP 0.20 DA		4472/24	250 (300-½)	
RNP 0.30 DA		4564/30	342 (400-¾)	
AUTHORIZATION REQUIRED				



SALT LAKE CITY, UTAH
Orig 20FEB25

40°47'N-111°59'W

RNAV (RNP) Z RWY 17

SALT LAKE CITY INTL (SLC)

SALT LAKE CITY, UTAH

AL-365 (FAA)

25219

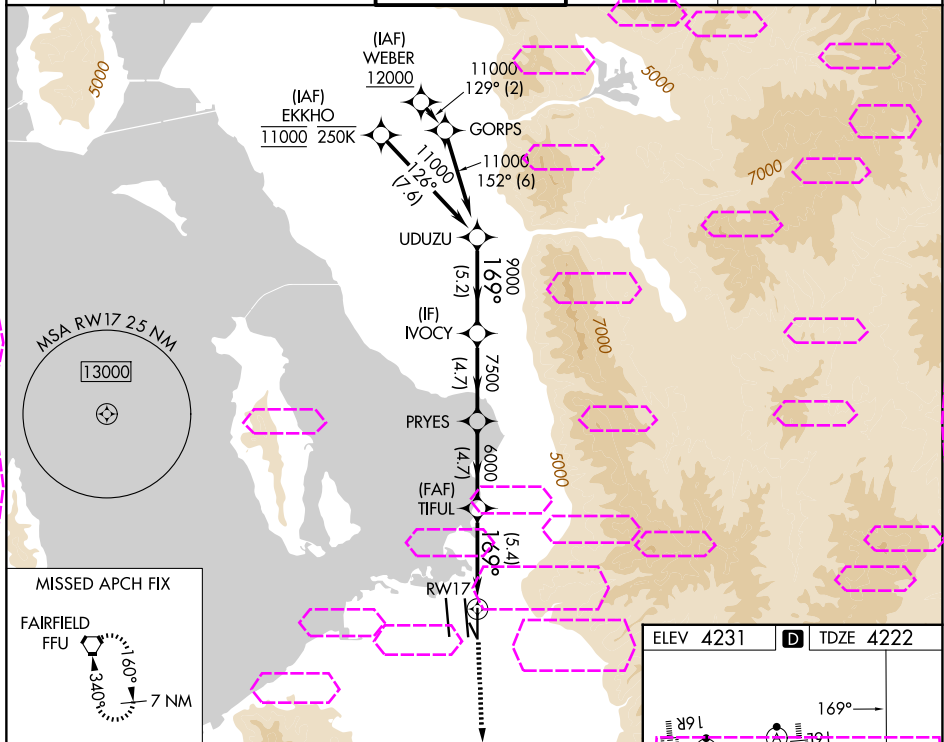
APP CRS	Rwy Ldg	9596
169°	TDZE	4222
	Apt Elev	4231

RNAV (RNP) Z RWY 17

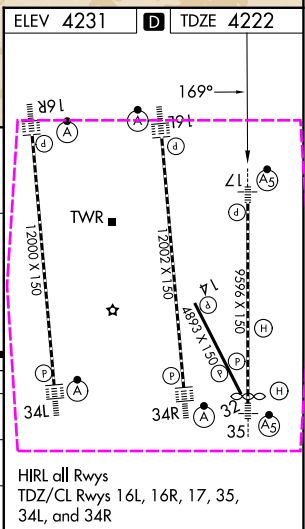
SALT LAKE CITY INTL (SLC)

RNP AR APCH - GPS.	MALSR	MISSED APPROACH: Climb to 4700 then climb to 10000 direct FFU VORTAC and hold.
For uncompensated Baro-VNAV systems, procedure NA below -10°C or above 54°C. Simultaneous approach authorized. For inop ALS, increase RNP 0.20 all Cnts visibility to RVR 4000 and RNP 0.30 all Cnts visibility to RVR 5500.		

D-ATIS	SALT LAKE CITY APP CON	SALT LAKE CITY TOWER	GND CON	CLNC DEL	CPDLC
124.75 125.625	125.7 284.6	118.3 257.8	121.9 348.6	127.3 379.975	



UDUZU	VGSI and RNAV glidepath not coincident (VGSI Angle 3.00/TCH 73).	4700	10000	FFU
11000	169°	9000	7500	6000
GP 3.00°	TCH 55	5.2 NM	4.7 NM	4.7 NM
CATEGORY	A	B	C	D
RNP 0.20 DA		4472/24	250 (300-½)	
RNP 0.30 DA		4564/30	342 (400-¾)	
AUTHORIZATION REQUIRED				



SALT LAKE CITY, UTAH
Orig 20FEB25

40°47'N-111°59'W

RNAV (RNP) Z RWY 17

SALT LAKE CITY INTL (SLC)