

SALT LAKE CITY INTL (SLC)
RNAV (RNP) Z RWY 16R

SW-4, 10 JUL 2025 to 07 AUG 2025

SALT LAKE CITY, UTAH

AL-365 (FAA)

25219

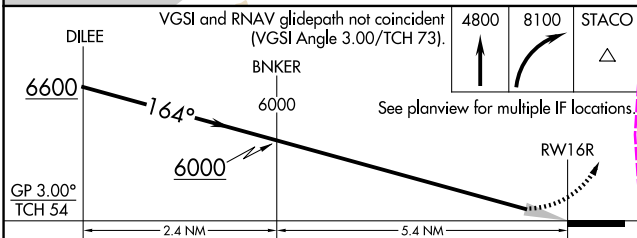
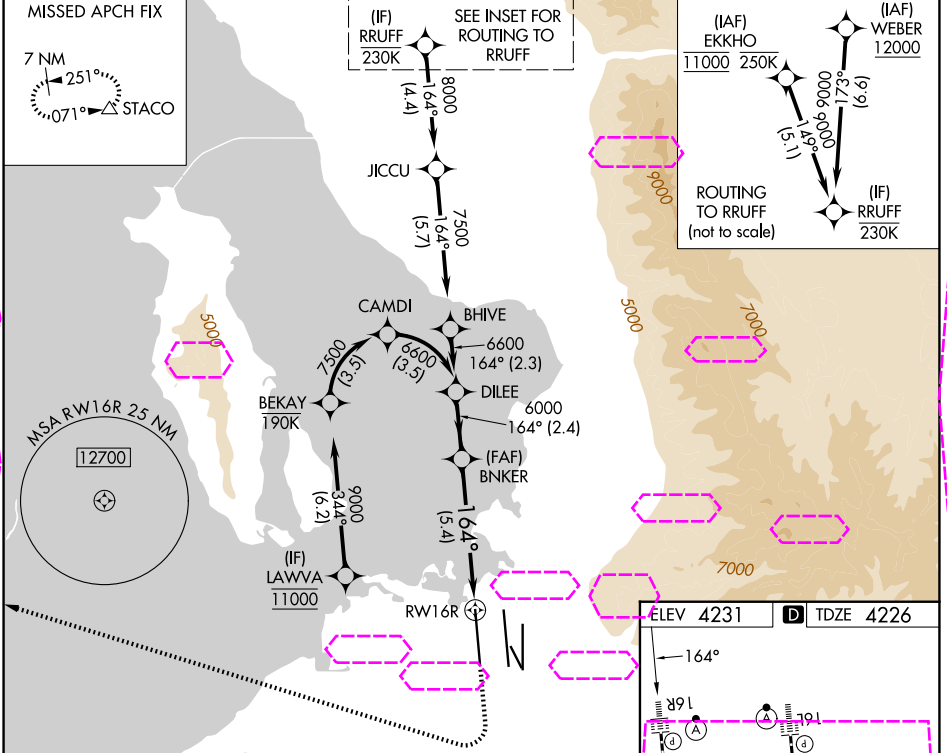
APP CRS	Rwy Ldg	12000
164°	TDZE	4226
	Apt Elev	4231

RNAV (RNP) Z RWY 16R

SALT LAKE CITY INTL (SLC)

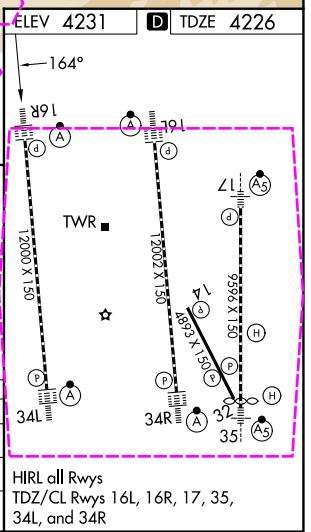
RNP AR APCH - GPS. Authorization required. From LAWVA: RF.	ALSF-2	MISSED APPROACH: Climb to 4800 then climbing right turn to 8100 direct STACO and hold.
For uncompensated Baro-VNAV systems, procedure NA below -10°C or above 54°C. Simultaneous approach authorized. For inop ALS, increase RNP 0.10 all Cats visibility to RVR 4000, and increase RNP 0.30 all Cats visibility to RVR 5500.		*Missed approach requires minimum climb of 339 feet per NM to 4680.

D-ATIS	SALT LAKE CITY APP CON	SALT LAKE CITY TOWER	GND CON	CLNC DEL	CPDLC
124.75 125.625	125.7 284.6	132.65 336.4	123.775 348.6	127.3 379.975	



CATEGORY	A	B	C	D
RNP 0.10 DA*	4481/24	255 (300-½)		
RNP 0.30 DA	4597/35	371 (400-¾)		

AUTHORIZATION REQUIRED



SALT LAKE CITY, UTAH
Orig 20FEB25

40°47'N-111°59'W

SALT LAKE CITY INTL (SLC)
RNAV (RNP) Z RWY 16R

SW-4, 07 AUG 2025 to 04 SEP 2025

SW-4, 07 AUG 2025 to 04 SEP 2025