

SALT LAKE CITY, UTAH

AL-365 (FAA)

25051

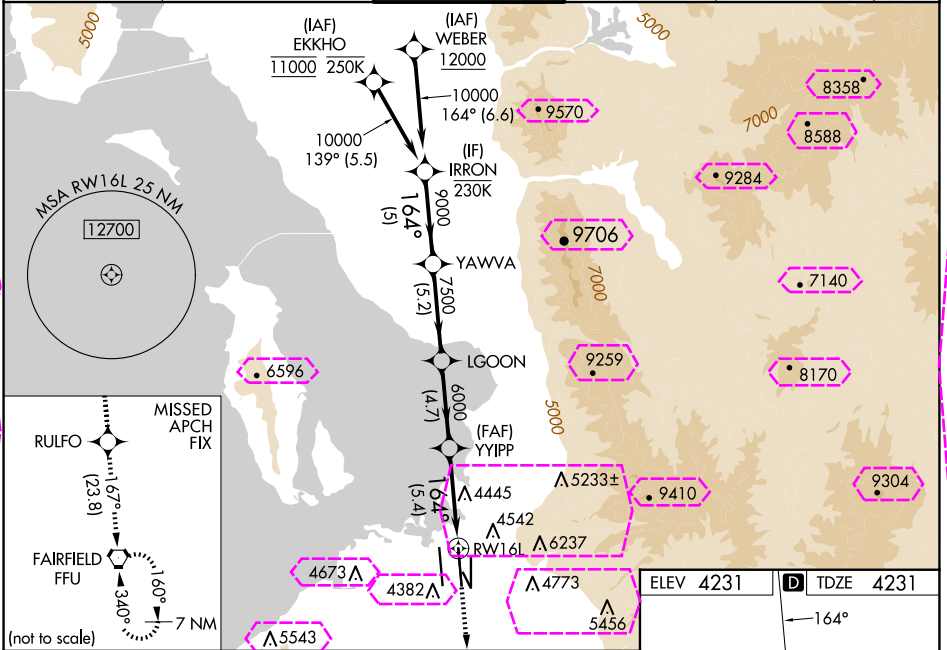
APP CRS 164°	Rwy Idg 12002
TDZE 4231	
Apt Elev 4231	

RNAV (RNP) Z RWY 16L

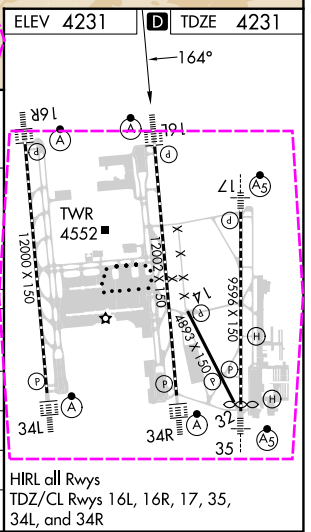
SALT LAKE CITY INTL (SLC)

RNP AR APCH - GPS.	ALSIF-2	MISSED APPROACH: Climb to 10000 direct RULFO and on track 167° to FFU VORTAC and hold. * Missed approach requires minimum climb of 323 feet per NM to 4740. # Missed approach requires minimum climb of 256 feet per NM to 4760.
▼ For uncompensated Baro-VNAV systems, procedure NA below -10°C or above 54°C. Simultaneous approach authorized. For inop ALS, increase RNP 0.16 all Cats visibility RVR to 5500, increase RNP 0.16 (323) all Cats visibility to RVR 4500 and increase RNP 0.30 all Cats visibility to RVR 5500.		

D-ATIS 124.75 125.625	SALT LAKE CITY APP CON 125.7 284.6	SALT LAKE CITY TOWER 119.05 257.8	GND CON 123.775 348.6	CLNC DEL 127.3 379.975	CPDLC
---------------------------------	--	---	---------------------------------	----------------------------------	-------



VGSi and RNAV glidepath not coincident (VGSi Angle 3.00/TCH 70).				
IRRON	YAWVA	LGOON	YYIPP	FFU
10000	9000	7500	6000	RWY 16L
GP 3.00°				
TCH 55				
	5 NM	5.2 NM	4.7 NM	5.4 NM
CATEGORY	A	B	C	D
RNP 0.16 DA*	4516/24	285 (300-½)		NA
RNP 0.30 DA#	4565/26	334 (400-½)		
RNP 0.16 DA	4573/30	342 (400-¾)		NA
RNP 0.30 DA	4592/35	361 (400-¾)		
AUTHORIZATION REQUIRED				



SALT LAKE CITY, UTAH
Orig 20FEB25

40°47'N-111°59'W

SALT LAKE CITY INTL (SLC)
RNAV (RNP) Z RWY 16L

SW-4, 10 JUL 2025 to 07 AUG 2025

SW-4, 10 JUL 2025 to 07 AUG 2025

SALT LAKE CITY, UTAH

AL-365 (FAA)

25219

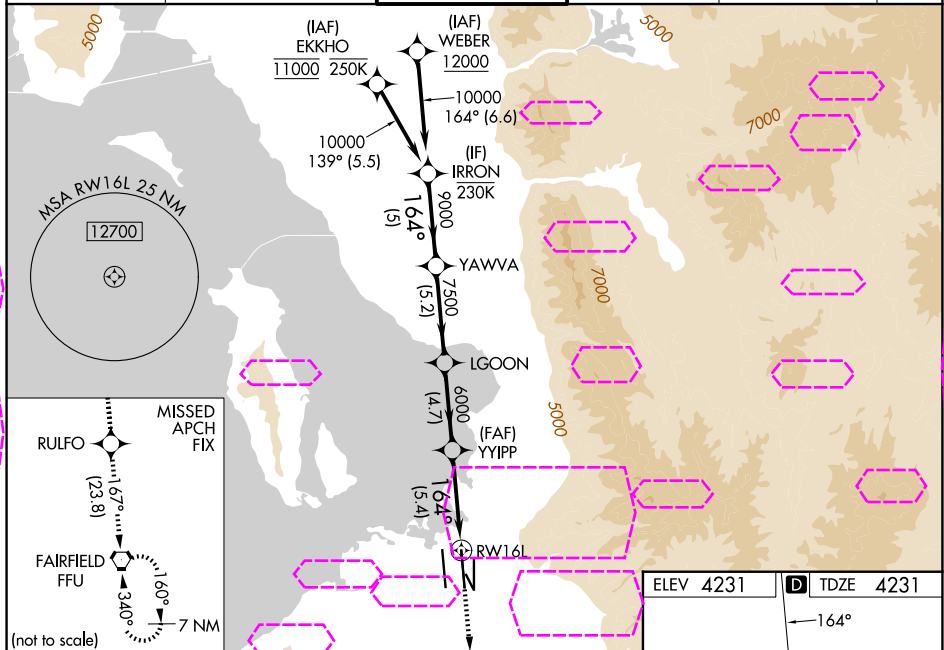
APP CRS 164°	Rwy Ldg TDZE Apt Elev 12002 4231 4231
------------------------	---

RNAV (RNP) Z RWY 16L

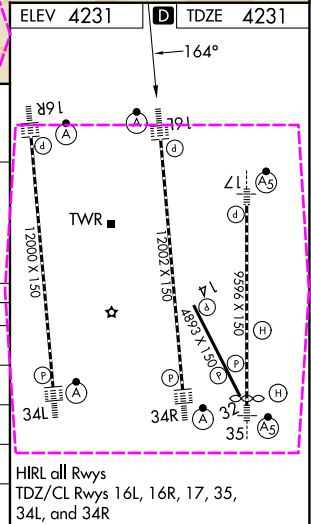
SALT LAKE CITY INTL (SLC)

RNP AR APCH - GPS.	ALSF-2	MISSED APPROACH: Climb to 10000 direct RULFO and on track 167° to FFU VORTAC and hold. * Missed approach requires minimum climb of 323 feet per NM to 4740. # Missed approach requires minimum climb of 256 feet per NM to 4760.
▼ For uncompensated Baro-VNAV systems, procedure NA below -10°C or above 54°C. Simultaneous approach authorized. For inop ALS, increase RNP 0.16 all Cats visibility RVR to 5500, increase RNP 0.16 (323) all Cats visibility to RVR 4500 and increase RNP 0.30 all Cats visibility to RVR 5500.		

D-ATIS 124.75 125.625	SALT LAKE CITY APP CON 125.7 284.6	SALT LAKE CITY TOWER 119.05 257.8	GND CON 123.775 348.6	CLNC DEL 127.3 379.975	CPDLC
---------------------------------	--	---	---------------------------------	----------------------------------	-------



IRRON	YAWVA	LGOON	YYIPP	RW16L
10000	9000	7500	6000	
GP 3.00° TCH 55				
5 NM	5.2 NM	4.7 NM	5.4 NM	
CATEGORY	A	B	C	D
RNP 0.16 DA*	4516/24	285 (300-½)		NA
RNP 0.30 DA#	4565/26	334 (400-½)		
RNP 0.16 DA	4573/30	342 (400-¾)		NA
RNP 0.30 DA	4592/35	361 (400-¾)		
AUTHORIZATION REQUIRED				



SALT LAKE CITY, UTAH
Orig 20FEB25

40°47'N-111°59'W

SALT LAKE CITY INTL (SLC)
RNAV (RNP) Z RWY 16L

SW-4, 07 AUG 2025 to 04 SEP 2025

SW-4, 07 AUG 2025 to 04 SEP 2025