
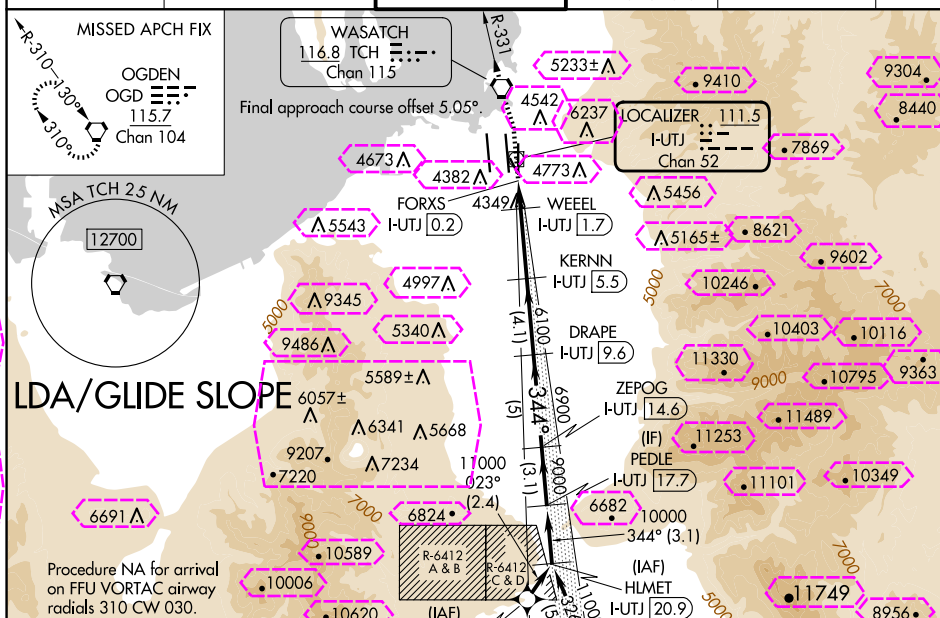


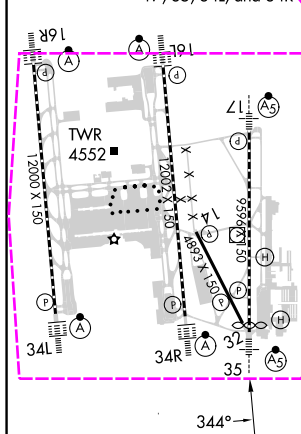
LOC/DME I-UTJ <u>111.5</u> Chan 52	APP CRS 344°	Rwy Idg <b>9272</b> TDZE <b>4227</b> Apt Elev <b>4231</b>
--	-----------------	---

LDA RWY 35  
SALT LAKE CITY INTL (SLC)

RNP APCH - GPS. From QWENN or JAZZZ.			MALSR 	MISSED APPROACH: Climb to 4800 then climbing left turn to 9000 direct TCH VORTAC and on TCH VORTAC R-331 to OGD VORTAC and hold.		
DME required.						
▼ Simultaneous approach authorized. For inop ALS, increase S-LDA/ GS 35 all Cats visibility to RVR 4000, increase S-LDA 35 Cat E visibility to 1 1/4 SM. Cat E restricted to USAF/USN aircraft.						
D-ATIS	SALT LAKE CITY APP CON	SALT LAKE CITY TOWER	GND CON	CLNC DEL	CPDLC	
124.75 125.625	125.7 284.6	118.3 257.8	121.9 348.6	127.3 379.975		



ELEV 4231	<b>D</b>	TDZE 4227
HIRL all Rwy		
TDZ/CL Rwy 16L, 16R,		
17, 35, 34L, and 34R		



QWENN  
11000 230K  
11000 to HLMET  
349° (8.9)  
7918  
IAF FAIRFIELD  
116.6 FFU  
Chan 113  
7789  
164°  
IAF JAZZZ  
12000 230K  
10908  
11068  
8000

4800 9000 TCH TCH OGD VGSJ and LDA glidepath not coincident (VGSJ Angle 3.00°/TCH 74°)  
↑ ↙ ○ R-331 ○ PEDLE  
I-UTJ DME ANTENNA WEEL KERN DRAPE ZEPOG  
I-UTJ I-UTJ I-UTJ I-UTJ  
FORXS I-UTJ I-UTJ I-UTJ  
0.2 0.9 1.7 5.5 9.6 14.6 17.7  
344° 10000  
6900 9000 GS 3.00°  
4900 6100 6100 TCH 55°  
0.4 0.7 0.8 3.8 NM 4.1 NM 5 NM 3.1 NM

CATEGORY	A	B	C	D	E
S-LDA/GS 35	4477/24 250 (300-½)				
S-LDA 35	4660/24 433 (500-½)		4660/40 433 (500-¾)		

SALT LAKE CITY, UTAH

AL-365 (FAA)

25219

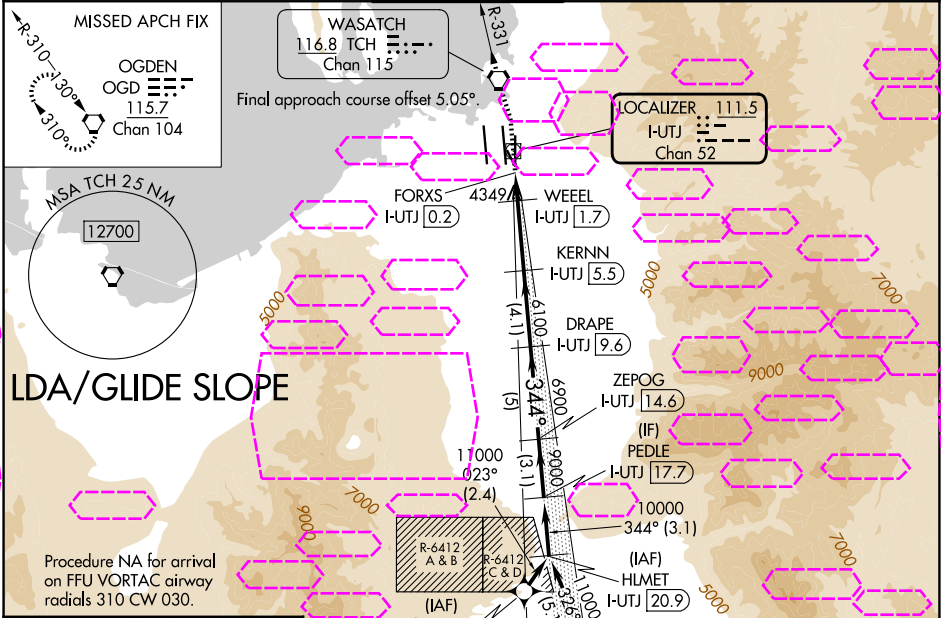
LOC/DME I-UTJ <b>111.5</b> Chan <b>52</b>	APP CRS <b>344°</b>	Rwy Ldg TDZE Apt Elev <b>9272</b> <b>4227</b> <b>4231</b>
---	------------------------	--

# LDA RWY 35

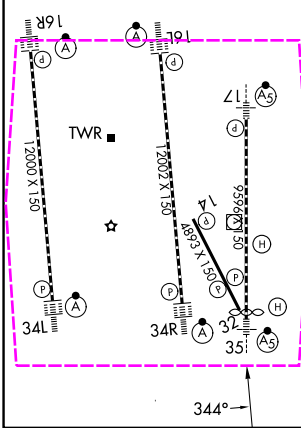
SALT LAKE CITY INTL (SLC)

RNP APCH - GPS. From QWENN or JAZZZ. DME required.	MALSR 	MISSED APPROACH: Climb to 4800 then climbing left turn to 9000 direct TCH VORTAC and on TCH VORTAC R-331 to OGD VORTAC and hold.
Simultaneous approach authorized. For inop ALS, increase S-LDA/GS 35 all Cats visibility to RVR 4000, increase S-LDA 35 Cat E visibility to 1 1/4 SM. Cat E restricted to USAF/USN aircraft.		

D-ATIS <b>124.75 125.625</b>	SALT LAKE CITY APP CON <b>125.7 284.6</b>	SALT LAKE CITY TOWER <b>118.3 257.8</b>	GND CON <b>121.9 348.6</b>	CLNC DEL <b>127.3 379.975</b>	CPDLC
---------------------------------	--	--	-------------------------------	----------------------------------	-------



ELEV 4231	<b>D</b>	TDZE 4227
HIRL all Rwys TDZ/CL Rwys 16L, 16R, 17, 35, 34L, and 34R		



IAF FAIRFIELD 116.6 FFU ::::: Chan 113		TCH R-331		OGD	VGSI and LDA glidepath not coincident (VGSI Angle 3.00/TCH 74).		PEDLE I-UTJ 17.7	
4800	9000	TCH	TCH R-331	OGD	VGSI and LDA glidepath not coincident (VGSI Angle 3.00/TCH 74).		PEDLE I-UTJ 17.7	
I-UTJ DME ANTENNA		WHEEL I-UTJ 1.7		KERNNN I-UTJ 5.5	DRAPE I-UTJ 9.6	ZEPOG I-UTJ 14.6	10000	
FORXS I-UTJ 0.2		WHEEL I-UTJ 1.7		KERNNN I-UTJ 5.5	DRAPE I-UTJ 9.6	ZEPOG I-UTJ 14.6	10000	
FORXS I-UTJ 0.2		WHEEL I-UTJ 1.7		KERNNN I-UTJ 5.5	DRAPE I-UTJ 9.6	ZEPOG I-UTJ 14.6	10000	
FORXS I-UTJ 0.2		WHEEL I-UTJ 1.7		KERNNN I-UTJ 5.5	DRAPE I-UTJ 9.6	ZEPOG I-UTJ 14.6	10000	
FORXS I-UTJ 0.2		WHEEL I-UTJ 1.7		KERNNN I-UTJ 5.5	DRAPE I-UTJ 9.6	ZEPOG I-UTJ 14.6	10000	
FORXS I-UTJ 0.2		WHEEL I-UTJ 1.7		KERNNN I-UTJ 5.5	DRAPE I-UTJ 9.6	ZEPOG I-UTJ 14.6	10000	
FORXS I-UTJ 0.2		WHEEL I-UTJ 1.7		KERNNN I-UTJ 5.5	DRAPE I-UTJ 9.6	ZEPOG I-UTJ 14.6	10000	
FORXS I-UTJ 0.2		WHEEL I-UTJ 1.7		KERNNN I-UTJ 5.5	DRAPE I-UTJ 9.6	ZEPOG I-UTJ 14.6	10000	
FORXS I-UTJ 0.2		WHEEL I-UTJ 1.7		KERNNN I-UTJ 5.5	DRAPE I-UTJ 9.6	ZEPOG I-UTJ 14.6	10000	
FORXS I-UTJ 0.2		WHEEL I-UTJ 1.7		KERNNN I-UTJ 5.5	DRAPE I-UTJ 9.6	ZEPOG I-UTJ 14.6	10000	
FORXS I-UTJ 0.2		WHEEL I-UTJ 1.7		KERNNN I-UTJ 5.5	DRAPE I-UTJ 9.6	ZEPOG I-UTJ 14.6	10000	
FORXS I-UTJ 0.2		WHEEL I-UTJ 1.7		KERNNN I-UTJ 5.5	DRAPE I-UTJ 9.6	ZEPOG I-UTJ 14.6	10000	
FORXS I-UTJ 0.2		WHEEL I-UTJ 1.7		KERNNN I-UTJ 5.5	DRAPE I-UTJ 9.6	ZEPOG I-UTJ 14.6	10000	
FORXS I-UTJ 0.2		WHEEL I-UTJ 1.7		KERNNN I-UTJ 5.5	DRAPE I-UTJ 9.6	ZEPOG I-UTJ 14.6	10000	
FORXS I-UTJ 0.2		WHEEL I-UTJ 1.7		KERNNN I-UTJ 5.5	DRAPE I-UTJ 9.6	ZEPOG I-UTJ 14.6	10000	
FORXS I-UTJ 0.2		WHEEL I-UTJ 1.7		KERNNN I-UTJ 5.5	DRAPE I-UTJ 9.6	ZEPOG I-UTJ 14.6	10000	
FORXS I-UTJ 0.2		WHEEL I-UTJ 1.7		KERNNN I-UTJ 5.5	DRAPE I-UTJ 9.6	ZEPOG I-UTJ 14.6	10000	
FORXS I-UTJ 0.2		WHEEL I-UTJ 1.7		KERNNN I-UTJ 5.5	DRAPE I-UTJ 9.6	ZEPOG I-UTJ 14.6	10000	
FORXS I-UTJ 0.2		WHEEL I-UTJ 1.7		KERNNN I-UTJ 5.5	DRAPE I-UTJ 9.6	ZEPOG I-UTJ 14.6	10000	
FORXS I-UTJ 0.2		WHEEL I-UTJ 1.7		KERNNN I-UTJ 5.5	DRAPE I-UTJ 9.6	ZEPOG I-UTJ 14.6	10000	
FORXS I-UTJ 0.2		WHEEL I-UTJ 1.7		KERNNN I-UTJ 5.5	DRAPE I-UTJ 9.6	ZEPOG I-UTJ 14.6	10000	
FORXS I-UTJ 0.2		WHEEL I-UTJ 1.7		KERNNN I-UTJ 5.5	DRAPE I-UTJ 9.6	ZEPOG I-UTJ 14.6	10000	
FORXS I-UTJ 0.2		WHEEL I-UTJ 1.7		KERNNN I-UTJ 5.5	DRAPE I-UTJ 9.6	ZEPOG I-UTJ 14.6	10000	
FORXS I-UTJ 0.2		WHEEL I-UTJ 1.7		KERNNN I-UTJ 5.5	DRAPE I-UTJ 9.6	ZEPOG I-UTJ 14.6	10000	
FORXS I-UTJ 0.2		WHEEL I-UTJ 1.7		KERNNN I-UTJ 5.5	DRAPE I-UTJ 9.6	ZEPOG I-UTJ 14.6	10000	
FORXS I-UTJ 0.2		WHEEL I-UTJ 1.7		KERNNN I-UTJ 5.5	DRAPE I-UTJ 9.6	ZEPOG I-UTJ 14.6	10000	
FORXS I-UTJ 0.2		WHEEL I-UTJ 1.7		KERNNN I-UTJ 5.5	DRAPE I-UTJ 9.6	ZEPOG I-UTJ 14.6	10000	
FORXS I-UTJ 0.2		WHEEL I-UTJ 1.7		KERNNN I-UTJ 5.5	DRAPE I-UTJ 9.6	ZEPOG I-UTJ 14.6	10000	
FORXS I-UTJ 0.2		WHEEL I-UTJ 1.7		KERNNN I-UTJ 5.5	DRAPE I-UTJ 9.6	ZEPOG I-UTJ 14.6	10000	
FORXS I-UTJ 0.2		WHEEL I-UTJ 1.7		KERNNN I-UTJ 5.5	DRAPE I-UTJ 9.6	ZEPOG I-UTJ 14.6	10000	
FORXS I-UTJ 0.2		WHEEL I-UTJ 1.7		KERNNN I-UTJ 5.5	DRAPE I-UTJ 9.6	ZEPOG I-UTJ 14.6	10000	
FORXS I-UTJ 0.2		WHEEL I-UTJ 1.7		KERNNN I-UTJ 5.5	DRAPE I-UTJ 9.6	ZEPOG I-UTJ 14.6	10000	
FORXS I-UTJ 0.2		WHEEL I-UTJ 1.7		KERNNN I-UTJ 5.5	DRAPE I-UTJ 9.6	ZEPOG I-UTJ 14.6	10000	
FORXS I-UTJ 0.2		WHEEL I-UTJ 1.7		KERNNN I-UTJ 5.5	DRAPE I-UTJ 9.6	ZEPOG I-UTJ 14.6	10000	
FORXS I-UTJ 0.2		WHEEL I-UTJ 1.7		KERNNN I-UTJ 5.5	DRAPE I-UTJ 9.6	ZEPOG I-UTJ 14.6	10000	
FORXS I-UTJ 0.2		WHEEL I-UTJ 1.7		KERNNN I-UTJ 5.5	DRAPE I-UTJ 9.6	ZEPOG I-UTJ 14.6	10000	
FORXS I-UTJ 0.2		WHEEL I-UTJ 1.7		KERNNN I-UTJ 5.5	DRAPE I-UTJ 9.6	ZEPOG I-UTJ 14.6	10000	
FORXS I-UTJ 0.2		WHEEL I-UTJ 1.7		KERNNN I-UTJ 5.5	DRAPE I-UTJ 9.6	ZEPOG I-UTJ 14.6	10000	
FORXS I-UTJ 0.2		WHEEL I-UTJ 1.7		KERNNN I-UTJ 5.5	DRAPE I-UTJ 9.6	ZEPOG I-UTJ 14.6	10000	
FORXS I-UTJ 0.2		WHEEL I-UTJ 1.7		KERNNN I-UTJ 5.5	DRAPE I-UTJ 9.6	ZEPOG I-UTJ 14.6	10000	
FORXS I-UTJ 0.2		WHEEL I-UTJ 1.7		KERNNN I-UTJ 5.5	DRAPE I-UTJ 9.6	ZEPOG I-UTJ 14.6	10000	
FORXS I-UTJ 0.2		WHEEL I-UTJ 1.7		KERNNN I-UTJ 5.5	DRAPE I-UTJ 9.6	ZEPOG I-UTJ 14.6	10000	
FORXS I-UTJ 0.2		WHEEL I-UTJ 1.7		KERNNN I-UTJ 5.5	DRAPE I-UTJ 9.6	ZEPOG I-UTJ 14.6	10000	
FORXS I-UTJ 0.2		WHEEL I-UTJ 1.7		KERNNN I-UTJ 5.5	DRAPE I-UTJ 9.6	ZEPOG I-UTJ 14.6	10000	
FORXS I-UTJ 0.2		WHEEL I-UTJ 1.7		KERNNN I-UTJ 5.5	DRAPE I-UTJ 9.6	ZEPOG I-UTJ 14.6	10000	
FORXS I-UTJ 0.2		WHEEL I-UTJ 1.7		KERNNN I-UTJ 5.5	DRAPE I-UTJ 9.6	ZEPOG I-UTJ 14.6	10000	
FORXS I-UTJ 0.2		WHEEL I-UTJ 1.7		KERNNN I-UTJ 5.5	DRAPE I-UTJ 9.6	ZEPOG I-UTJ 14.6	10000	
FORXS I-UTJ 0.2		WHEEL I-UTJ 1.7		KERNNN I-UTJ 5.5	DRAPE I-UTJ 9.6	ZEPOG I-UTJ 14.6	10000	
FORXS I-UTJ 0.2		WHEEL I-UTJ 1.7		KERNNN I-UTJ 5.5	DRAPE I-UTJ 9.6	ZEPOG I-UTJ 14.6	10000	
FORXS I-UTJ 0.2		WHEEL I-UTJ 1.7		KERNNN I-UTJ 5.5	DRAPE I-UTJ 9.6	ZEPOG I-UTJ 14.6	10000	
FORXS I-UTJ 0.2		WHEEL I-UTJ 1.7		KERNNN I-UTJ 5.5	DRAPE I-UTJ 9.6	ZEPOG I-UTJ 14.6	10000	
FORXS I-UTJ 0.2		WHEEL I-UTJ 1.7		KERNNN I-UTJ 5.5	DRAPE I-UTJ 9.6	ZEPOG I-UTJ 14.6	10000	
FORXS I-UTJ 0.2		WHEEL I-UTJ 1.7		KERNNN I-UTJ 5.5	DRAPE I-UTJ 9.6	ZEPOG I-UTJ 14.6	10000	
FORXS I-UTJ 0.2		WHEEL I-UTJ 1.7		KERNNN I-UTJ 5.5	DRAPE I-UTJ 9.6	ZEPOG I-UTJ 14.6	10000	
FORXS I-UTJ 0.2		WHEEL I-UTJ 1.7		KERNNN I-UTJ 5.5	DRAPE I-UTJ 9.6	ZEPOG I-UTJ 14.6	10000	
FORXS I-UTJ 0.2		WHEEL I-UTJ 1.7		KERNNN I-UTJ 5.5	DRAPE I-UTJ 9.6	ZEPOG I-UTJ 14.6	10000	
FORXS I-UTJ 0.2		WHEEL I-UTJ 1.7		KERNNN I-UTJ 5.5	DRAPE I-UTJ 9.6	ZEPOG I-UTJ 14.6	10000	
FORXS I-UTJ 0.2		WHEEL I-UTJ 1.7		KERNNN I-UTJ 5.5	DRAPE I-UTJ 9.6	ZEPOG I-UTJ 14.6	10000	
FORXS I-UTJ 0.2		WHEEL I-UTJ 1.7		KERNNN I-UTJ 5.5	DRAPE I-UTJ 9.6	ZEPOG I-UTJ 14.6	10000	
FORXS I-UTJ 0.2		WHEEL I-UTJ 1.7		KERNNN I-UTJ 5.5	DRAPE I-UTJ 9.6	ZEPOG I-UTJ 14.6	10000	
FORXS I-UTJ 0.2		WHEEL I-UTJ 1.7		KERNNN I-UTJ 5.5	DRAPE I-UTJ 9.6	ZEPOG I-UTJ 14.6	10000	
FORXS I-UTJ 0.2		WHEEL I-UTJ 1.7		KERNNN I-UTJ 5.5	DRAPE I-UTJ 9.6	ZEPOG I-UTJ 14.6	10000	
FORXS I-UTJ 0.2		WHEEL I-UTJ 1.7		KERNNN I-UT				

SALT LAKE CITY, UTAH  
Amdt 1A 20MAR25

40°47'N-111°59'W

SALT LAKE CITY INTL (SLC)  
**LDA RWY 35**

SW-4, 07 AUG 2025 to 04 SEP 2025

SW-4, 07 AUG 2025 to 04 SEP 2025