

SALT LAKE CITY, UTAH

AL-365 (FAA)

25051

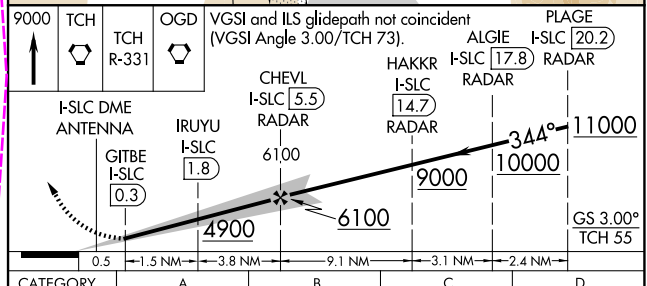
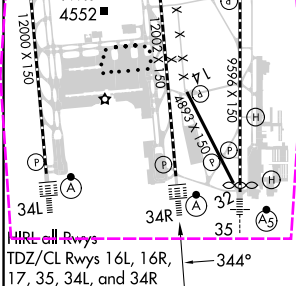
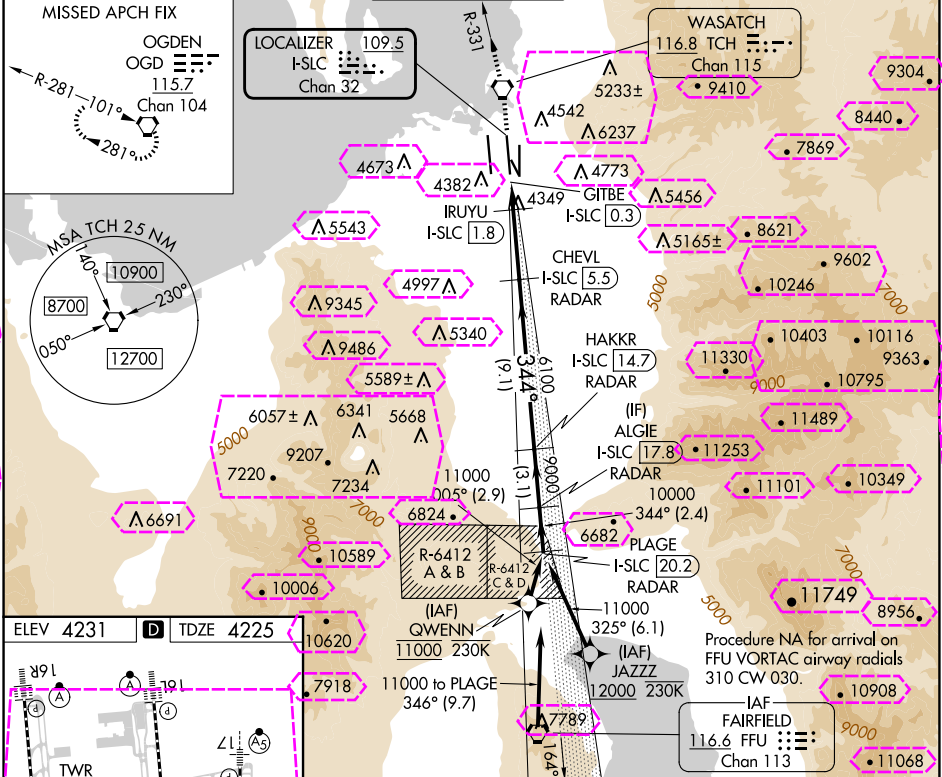
LOC/DME I-SLC 109.5 Chan 32	APP CRS 344°	Rwy Idg 12002 TDZE 4225 Apt Elev 4231
---	------------------------	--

ILS or LOC RWY 34R

SALT LAKE CITY INTL (SLC)

RNP APCH - GPS. From QWENN or JAZZZ.	ALSF-2 (A)	MISSED APPROACH: Climb to 9000 direct TCH VORTAC and on TCH VORTAC R-331 to OGD VORTAC and hold.
DME required for LOC only. DME or RADAR required.		
Simultaneous approach authorized. For inop ALS, increase S-LOC 34R Cat C/D visibility to RVR 5500.		

D-ATIS 124.75 125.625	SALT LAKE CITY APP CON 125.7 284.6	SALT LAKE CITY TOWER 119.05 257.8	GND CON 123.775 348.6	CLNC DEL 127.3 379.975	CPDLC
---------------------------------	--	---	---------------------------------	----------------------------------	-------



FAF to MAP 5.3 NM					
Knots	60	90	120	150	180
Min:Sec	5:18	3:32	2:39	2:07	1:46
CATEGORY	A		B		D
S-ILS 34R	4425/18		200 (200-½)		
S-LOC 34R	4600/24		375 (400-½)		4600/35 375 (400-¾)

SALT LAKE CITY, UTAH
Amdt 5 20FEB25

40°47'N-111°59'W

SALT LAKE CITY INTL (SLC) ILS or LOC RWY 34R

SW-4, 10 JUL 2025 to 07 AUG 2025

SW-4, 10 JUL 2025 to 07 AUG 2025

9000 ↑ TCH R-331 OGD	VGSI and ILS glidepath not coincident (VGSI Angle 3.00/TCH 73).				PLAGE ALGIE I-SLC 17.8 RADAR I-SLC 20.2 RADAR
I-SLC DME ANTENNA	IRUYU I-SLC 1.8	CHEVL I-SLC 5.5 RADAR	HAKKR I-SLC 14.7 RADAR	9000	11000
GITBE I-SLC 0.3	6100	6100	9000	10000	GS 3.00° TCH 55
0.5	1.5 NM	3.8 NM	9.1 NM	3.1 NM	2.4 NM
CATEGORY	A	B	C	D	
S-ILS 34R	4425/18 200 (200-½)				
S-LOC 34R	4600/24 375 (400-½)	4600/35 375 (400-¾)			