

SALT LAKE CITY, UTAH

AL-365 (FAA)

25051

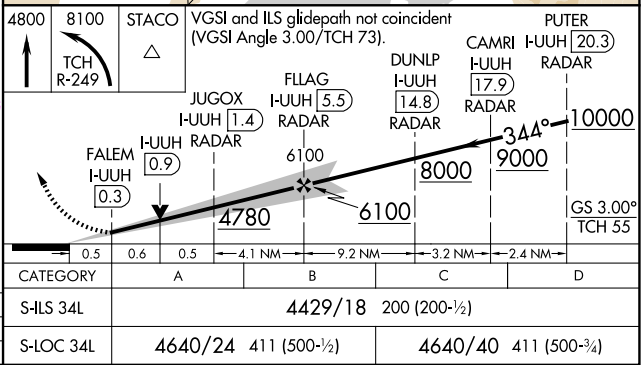
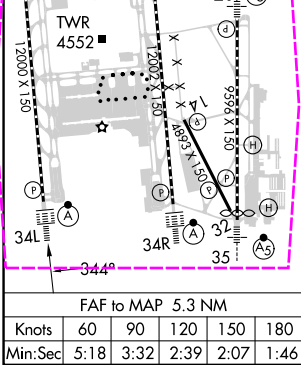
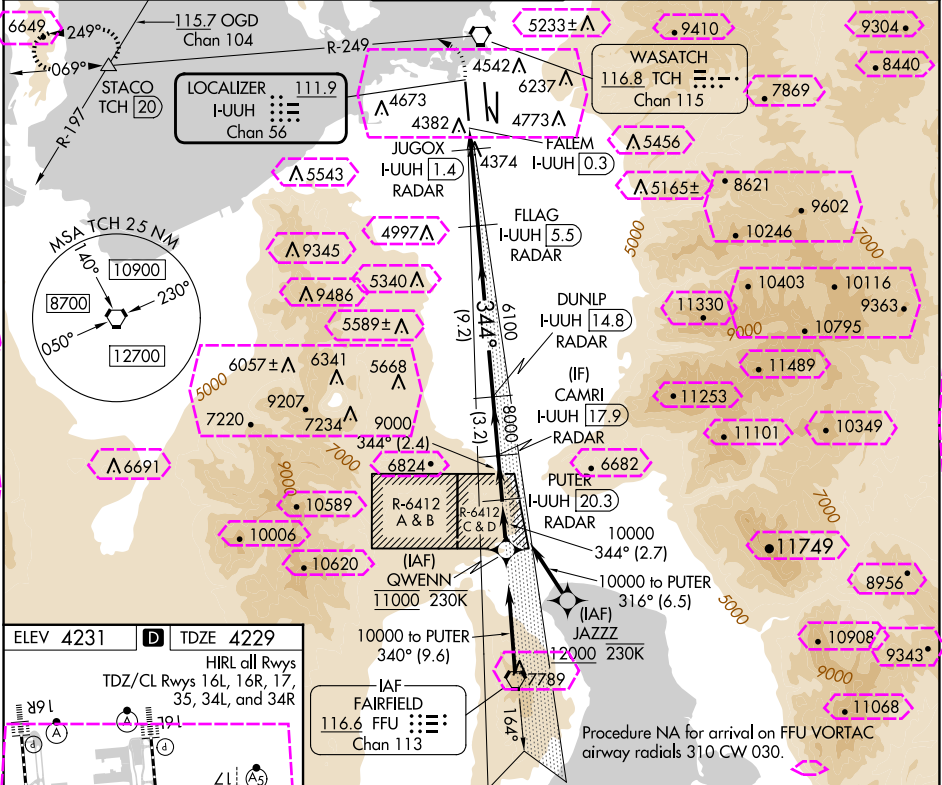
|   |                        |   |
|---|------------------------|---|
| LOC/DME I-UUH<br><b>111.9</b><br>Chan <b>56</b> | APP CRS<br><b>344°</b> | Rwy Idg<br>TDZE<br>Apt Elev<br><b>12000</b><br><b>4229</b><br><b>4231</b> |
|---|------------------------|---|

# ILS or LOC RWY 34L

SALT LAKE CITY INTL (SLC)

|  |         |  |
|--|---------|--|
| RNP APCH - GPS. From QWENN or JAZZZ.   | ALSIF-2 | MISSED APPROACH: Climb to 4800 then climbing left turn to 8100 on TCH VORTAC R-249 to STACO INT/TCH 20 DME and hold. |
| DME or RADAR required.   |         |  |
| Simultaneous approach authorized. For inop ALS, increase S-LOC 34L Cat C/D visibility to RVR 6000. |         |  |

|                                 |  |   |                                 |                                  |       |
|---------------------------------|--|---|---------------------------------|----------------------------------|-------|
| D-ATIS<br><b>124.75 125.625</b> | SALT LAKE CITY APP CON<br><b>125.7 284.6</b> | SALT LAKE CITY TOWER<br><b>132.65 336.4</b> | GND CON<br><b>123.775 348.6</b> | CLNC DEL<br><b>127.3 379.975</b> | CPDLC |
|---------------------------------|--|---|---------------------------------|----------------------------------|-------|



SALT LAKE CITY, UTAH  
Amdt 4 20FEB25

40°47'N-111°59'W

# SALT LAKE CITY INTL (SLC)

## ILS or LOC RWY 34L

SW-4, 10 JUL 2025 to 07 AUG 2025

SW-4, 10 JUL 2025 to 07 AUG 2025

SALT LAKE CITY, UTAH

AL-365 (FAA)

25219

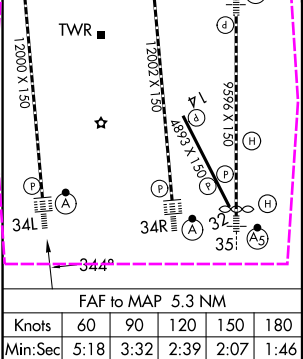
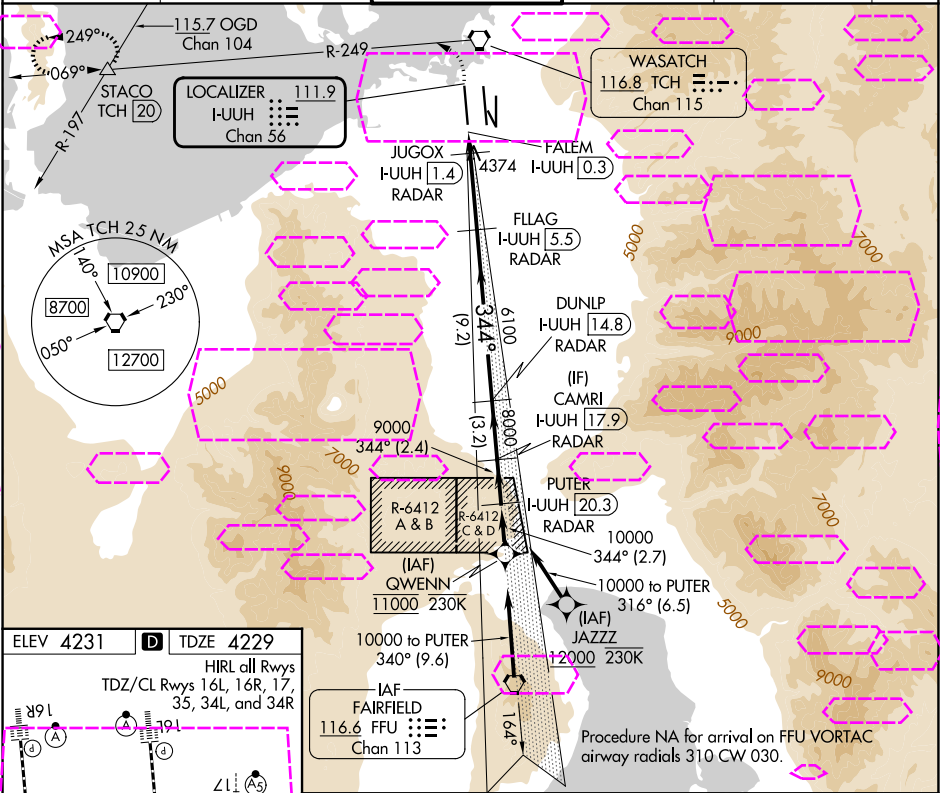
|   |                        |   |
|---|------------------------|---|
| LOC/DME I-UUH<br><b>111.9</b><br>Chan <b>56</b> | APP CRS<br><b>344°</b> | Rwy Ldg<br>TDZE<br>Apt Elev<br><b>12000</b><br><b>4229</b><br><b>4231</b> |
|---|------------------------|---|

# ILS or LOC RWY 34L

SALT LAKE CITY INTL (SLC)

|  |  |  |  |
|--|--|--|--|
| RNP APCH - GPS. From QWENN or JAZZZ.   |  | ALSIF-2<br> | MISSED APPROACH: Climb to 4800 then climbing left turn to 8100 on TCH VORTAC R-249 to STACO INT/TCH 20 DME and hold. |
| DME or RADAR required.   |  |  |  |
|  Simultaneous approach authorized. For inop ALS, increase S-LOC 34L Cat C/D visibility to RVR 6000. |  |  |  |

|                                 |  |   |                                 |                                  |       |
|---------------------------------|--|---|---------------------------------|----------------------------------|-------|
| D-ATIS<br><b>124.75 125.625</b> | SALT LAKE CITY APP CON<br><b>125.7 284.6</b> | SALT LAKE CITY TOWER<br><b>132.65 336.4</b> | GND CON<br><b>123.775 348.6</b> | CLNC DEL<br><b>127.3 379.975</b> | CPDLC |
|---------------------------------|--|---|---------------------------------|----------------------------------|-------|



|   |  |   |  |                        |  |
|---|--|---|--|------------------------|--|
| 4800 8100 STACO                         |  | VGSI and ILS glidepath not coincident (VGSI Angle 3.00/TCH 73). |  | PUTER                  |  |
| TCH R-249                               |  | JUGOX I-UUH 1.4 RADAR   |  | DUNLP I-UUH 14.8 RADAR |  |
| FALEM I-UUH 0.3 RADAR                   |  | FLAG I-UUH 5.5 RADAR  |  | CAMRI I-UUH 17.9 RADAR |  |
| 4780 6100                               |  | 8000 9000   |  | 10000                  |  |
| 0.5 0.6 0.5 4.1 NM 9.2 NM 3.2 NM 2.4 NM |  | GS 3.00° TCH 55   |  |                        |  |
| CATEGORY A                              |  | B   |  | C                      |  |
| S-ILS 34L                               |  | 4429/18 200 (200-1/2)   |  |                        |  |
| S-LOC 34L                               |  | 4640/24 411 (500-1/2)   |  | 4640/40 411 (500-3/4)  |  |

SALT LAKE CITY, UTAH  
Amdt 4 20FEB25

40°47'N-111°59'W

# SALT LAKE CITY INTL (SLC)

## ILS or LOC RWY 34L

SW-4, 07 AUG 2025 to 04 SEP 2025

SW-4, 07 AUG 2025 to 04 SEP 2025