

SW-4, 10 JUL 2025 to 07 AUG 2025

SALT LAKE CITY, UTAH

AL-365 (FAA)

25219

LOC/DME I-BNT	APP CRS	Rwy Ldg	9596
111.5	169°	TDZE	4222
Chan 52		Apt Elev	4231

ILS or LOC RWY 17

SALT LAKE CITY INTL (SLC)

From WEBER, EKKHO: RNAV 1-GPS required.

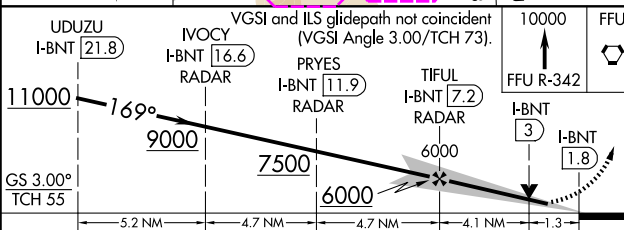
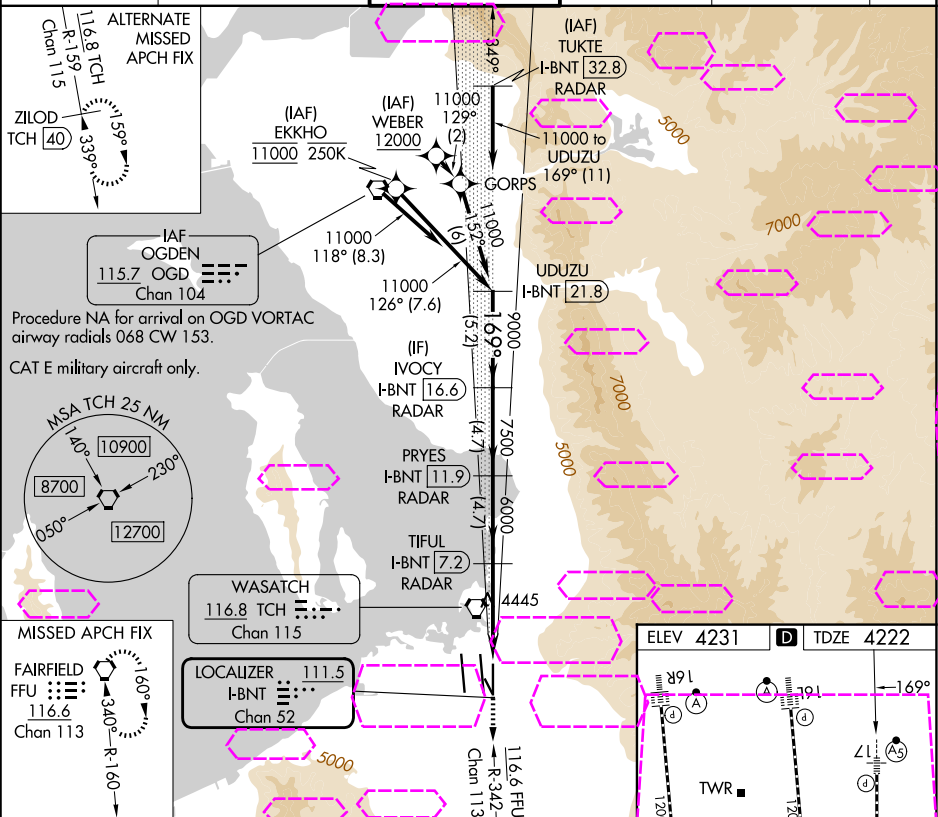
DME or RADAR required.

Simultaneous approach authorized. For inop ALS, increase S-ILS 17 Cat E visibility to RVR 4000, increase S-LOC 17 Cat C/D/E visibility to 1% SM.

MALSR

MISSED APPROACH: Climb to 10000 on FFU R-342 to FFU VORTAC and hold.

D-ATIS	SALT LAKE CITY APP CON	SALT LAKE CITY TOWER	GND CON	CLNC DEL	CPDLC
124.75 125.625	125.7 284.6	118.3 257.8	121.9 348.6	127.3 379.975	



ELEV 4231	D	TDZE 4222
TWR		
34L		
34R		
35L		
35R		
36L		
36R		
37L		
37R		
38L		
38R		
39L		
39R		
40L		
40R		
41L		
41R		
42L		
42R		
43L		
43R		
44L		
44R		
45L		
45R		
46L		
46R		
47L		
47R		
48L		
48R		
49L		
49R		
50L		
50R		
51L		
51R		
52L		
52R		
53L		
53R		
54L		
54R		
55L		
55R		
56L		
56R		
57L		
57R		
58L		
58R		
59L		
59R		
60L		
60R		
61L		
61R		
62L		
62R		
63L		
63R		
64L		
64R		
65L		
65R		
66L		
66R		
67L		
67R		
68L		
68R		
69L		
69R		
70L		
70R		
71L		
71R		
72L		
72R		
73L		
73R		
74L		
74R		
75L		
75R		
76L		
76R		
77L		
77R		
78L		
78R		
79L		
79R		
80L		
80R		
81L		
81R		
82L		
82R		
83L		
83R		
84L		
84R		
85L		
85R		
86L		
86R		
87L		
87R		
88L		
88R		
89L		
89R		
90L		
90R		
91L		
91R		
92L		
92R		
93L		
93R		
94L		
94R		
95L		
95R		
96L		
96R		
97L		
97R		
98L		
98R		
99L		
99R		
100L		
100R		

CATEGORY	A	B	C	D	E
S-ILS 17	4422/18 200 (200-½)				
S-LOC 17	4700/24	478 (500-½)	4700/50	478 (500-1)	

SALT LAKE CITY, UTAH
Amdt 15 20FEB25

40°47'N-111°59'W

SALT LAKE CITY INTL (SLC)
ILS or LOC RWY 17