

SALT LAKE CITY INTL (SLC)
ILS or LOC RWY 16R

SALT LAKE CITY, UTAH

AL-365 (FAA)

25219

LOC/DME I-UAT 111.9 Chan 56	APP CRS 164°	Rwy Ldg 12000 TDZE 4226 Apt Elev 4231
---	------------------------	---

ILS or LOC RWY 16R

SALT LAKE CITY INTL (SLC)

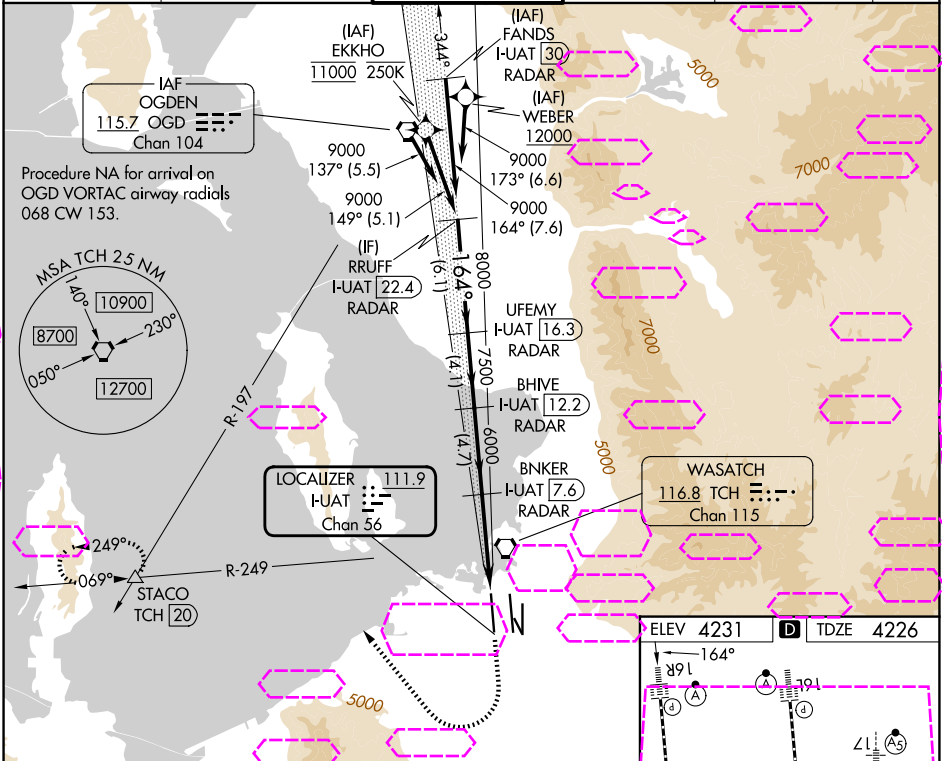
RNP APCH - GPS. From EKKHO or WEBER.
DME or RADAR required.

Simultaneous approach authorized. For inop ALS, increase S-LOC 16R Cat A and B visibilities to RVR 5500, and Cat C and D visibilities to 1% SM.

ALSF-2

MISSED APPROACH: Climb to 4800 then climbing right turn to 8100 on heading 310° and on TCH VORTAC R-249 to STACO INT/TCH 20 DME and hold.

D-ATIS 124.75 125.625	SALT LAKE CITY APP CON 125.7 284.6	SALT LAKE CITY TOWER 132.65 336.4	GND CON 123.775 348.6	CLNC DEL 127.3 379.975	CPDLC
---------------------------------	--	---	---------------------------------	----------------------------------	-------



SW-4, 07 AUG 2025 to 04 SEP 2025

SW-4, 07 AUG 2025 to 04 SEP 2025

